



• Back Road Equipment Slider Rear Rack Installation Instructions BMW F 850 GS Adventure

Tools Required:

Loctite 242 or equivalent

T30 bit or T30 wrench

4 mm hex bit or hex wrench

5 mm hex bit or hex wrench

Bit driver (if you are using bits)

Torque wrench that fits bits

1/4" drill bit

21/64" drill bit

electric hand drill

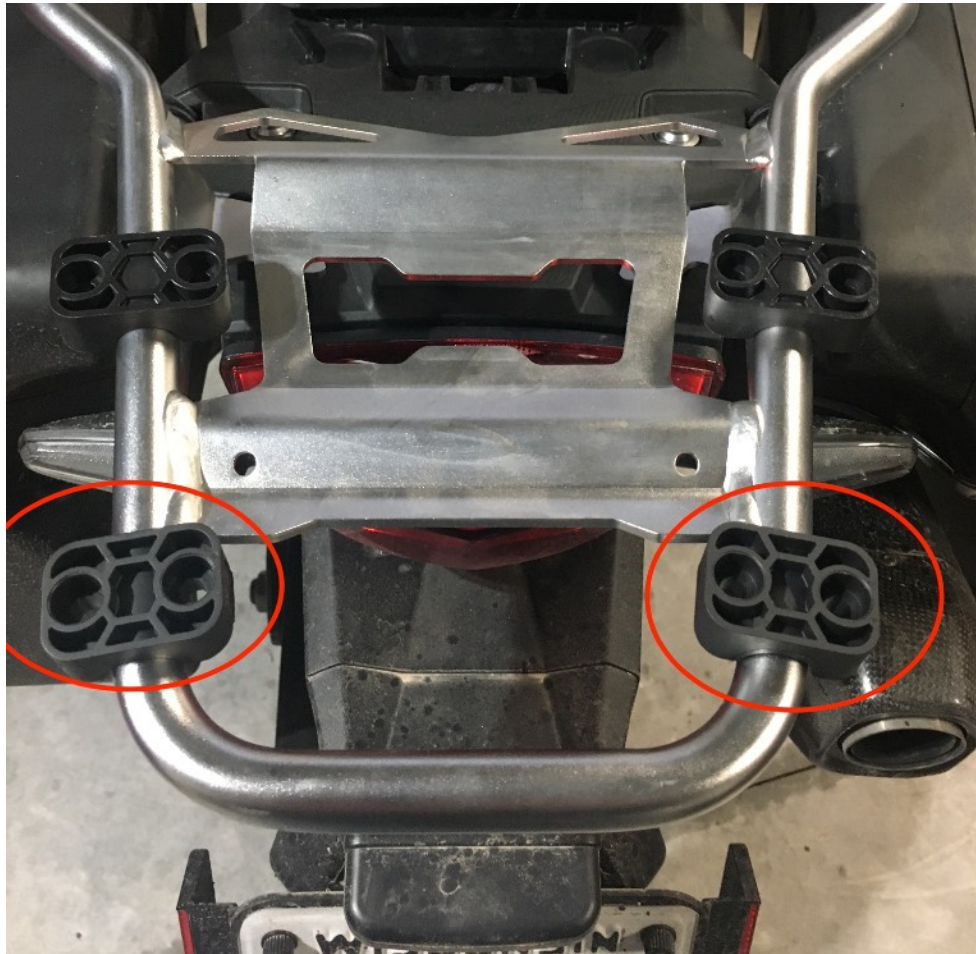
marking pen

• Kit Contents:

- 1 Slider Plate with cam lever
- 4 - pucks
- 4 - M8 x 35 Button Head Screws
- 4 - 1.5" diameter washer
- 4 - M6 -1 x 30 flat head screws
- 4 - M6 -1 x 45 flat head screws
- 8 - M6 lock nuts
- 2 - wide clamp assemblies (formed stainless steel)
- 2 - narrow clamp assemblies (nylon)

Do not exceed the OEMs
recommendation for weight on the
rear rack of the motorcycle!!

In order to properly locate the top box
it will be necessary to install, remove
and re-install the BRE rack, please keep
this in mind and read through the
instructions completely before starting
the work.



Step 1 Place the top of the clamp halves in the locations shown in the photo. **Note:** The narrow clamp halves must be located at the rear of the grab handle.



Step 2 Place the Slider Plate on top of the clamp halves and insert the four M6 x 45 flat head screws through the plate and clamp halves in the rear.



Step 3 Insert the formed clamp bottoms into the slot of the OEM tube rack and insert the four M6 x 30 flat head screws as shown.



Step 4 Thread the M6 lock nuts onto the front four flat head screws.
Tip: Use an open end wrench with a piece of duct tape to help put the lock nut into position.



Step 5 Install the nylon bottom clamp halves, stainless steel plates and M6 lock nuts on the rear clamp screws as shown in the photo. Install both LH and RH sides.



Step 6 Use a 4mm driver and 10mm open end wrench to tighten all eight M6 lock nuts. **Note:** Clamp halves will be closed together when tightened correctly, do not over tighten.



Step 7 Install one of the black plastic pucks into the key hole with the cam lever. Lock the puck into place with the cam lever. This will be referred to as the “Master Puck”

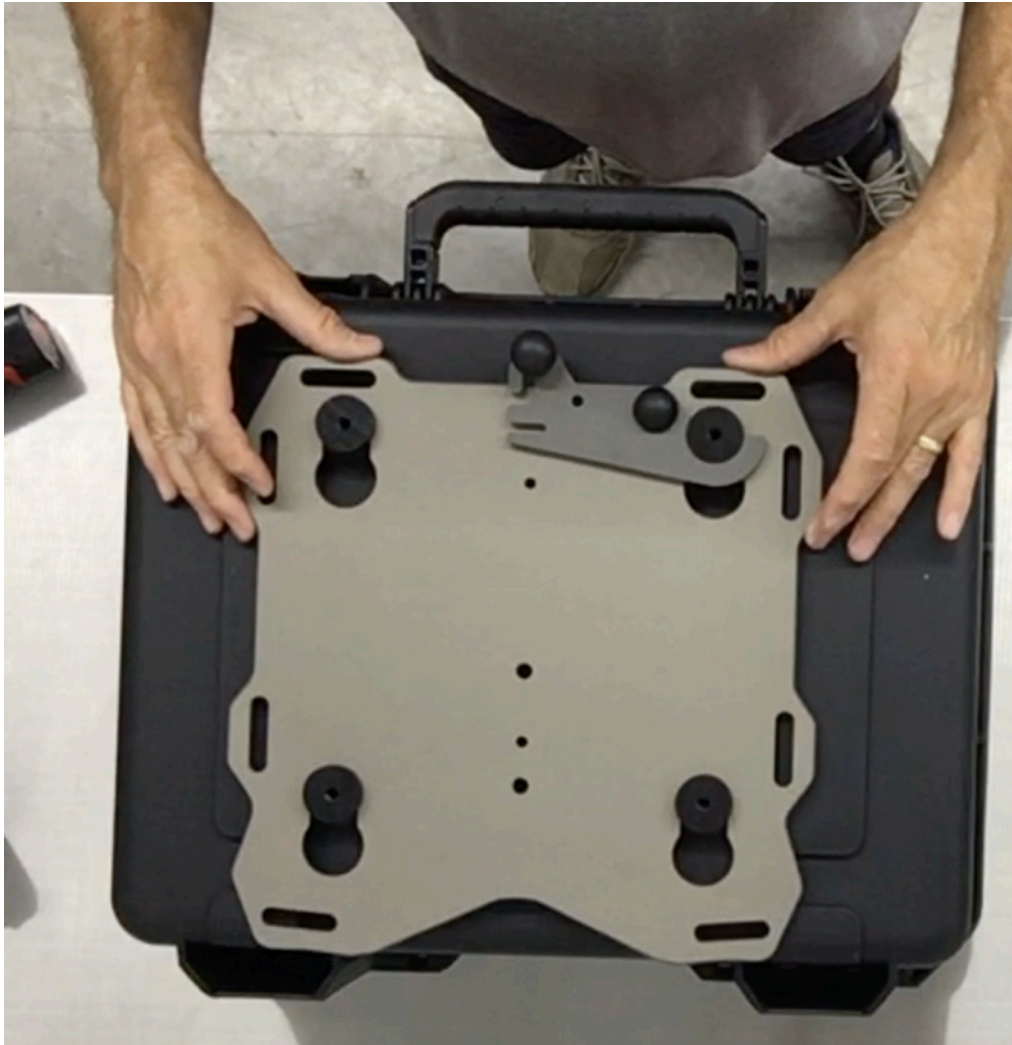
Note: Remove the large washer and screw from the puck before putting into the plate. The screws and washers are installed into the pucks for shipment as part of our QA process.



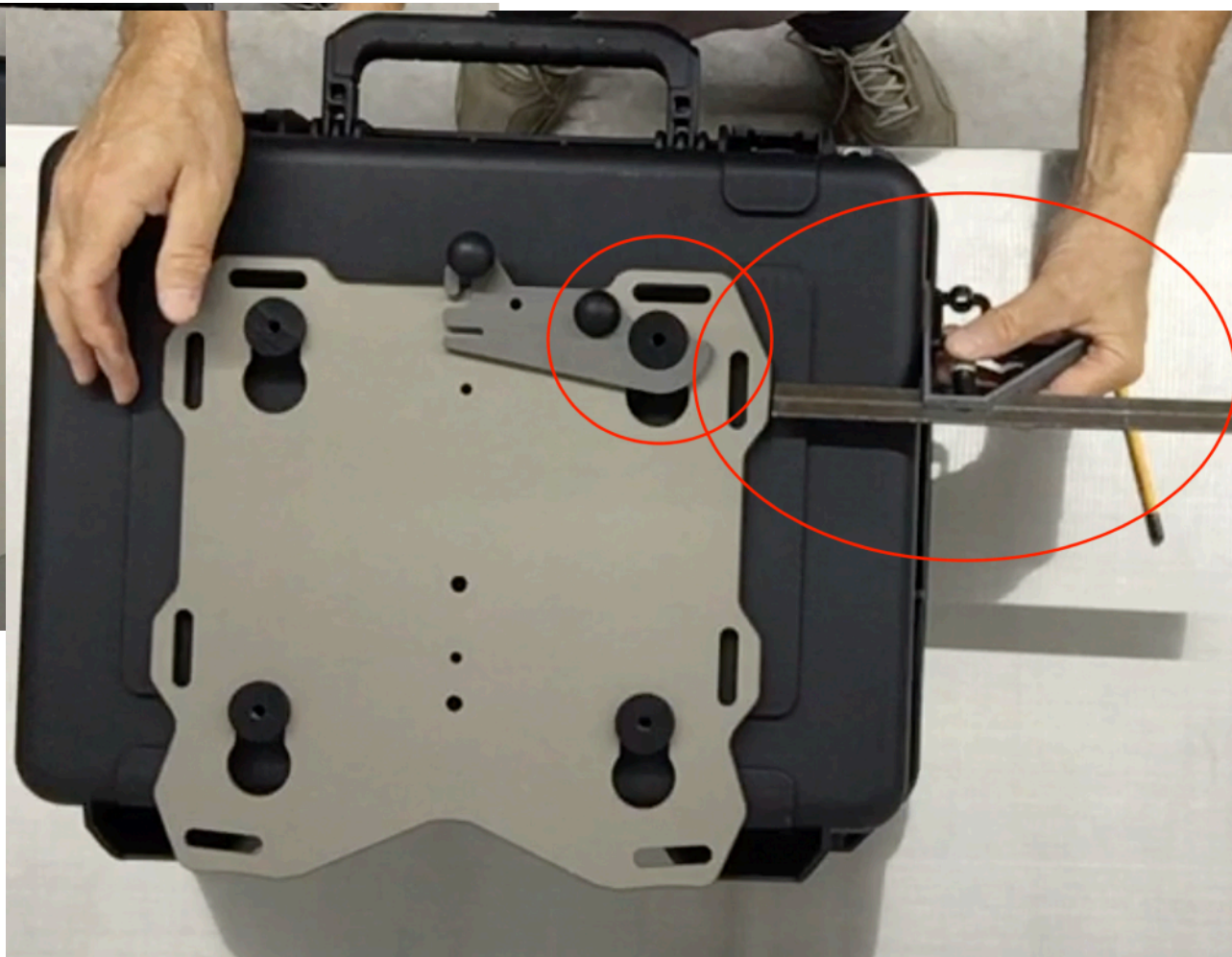
Step 8 Insert the 3 remaining pucks into the keyholes in the plate.



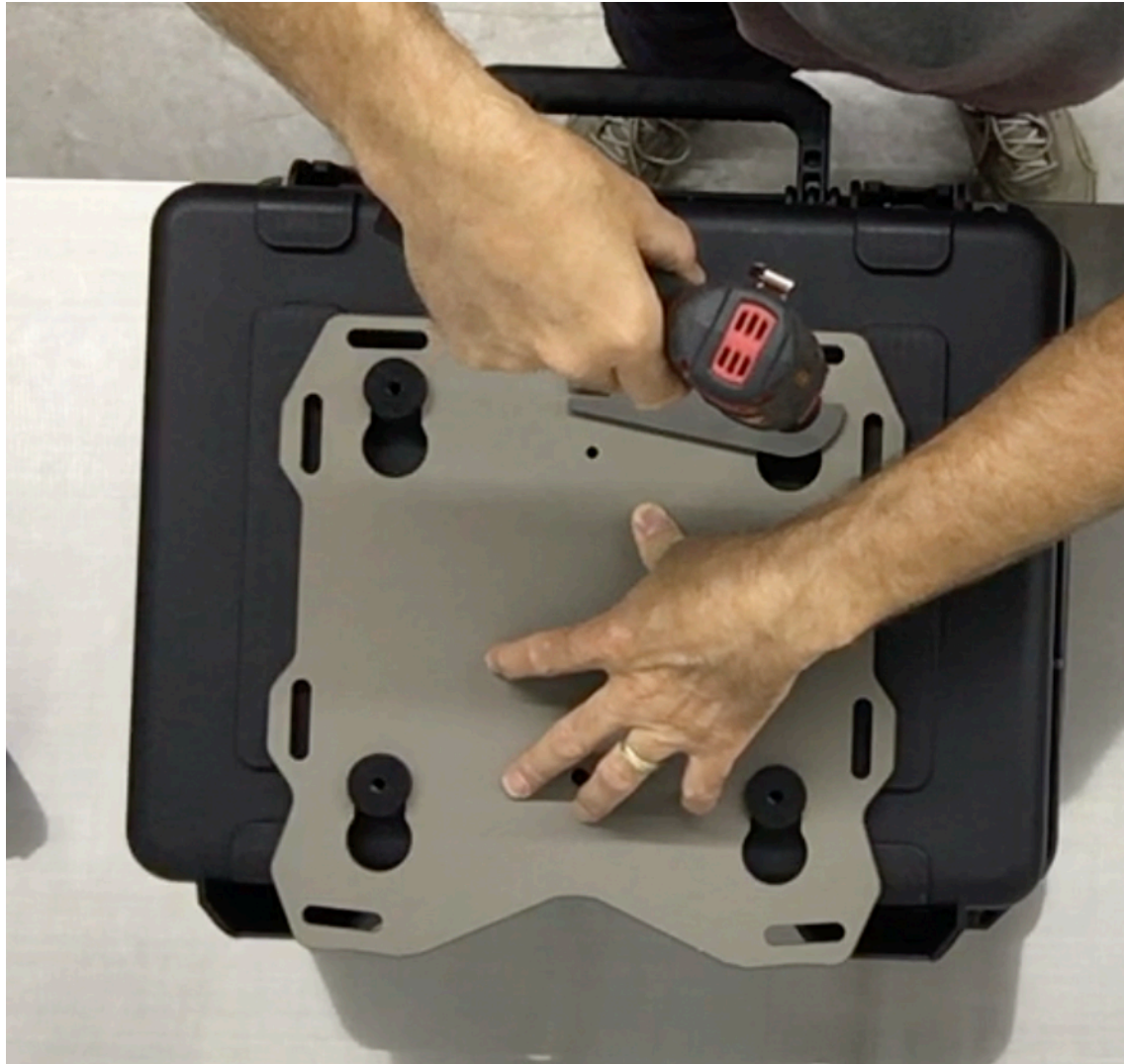
Step 9 Position the case on top of the pucks. Determine the for/aft location (side to side will be determined later). Position the case as far forward as possible without interfering with passenger comfort. Also consider if you will be placing any gear on the seat or if you want to be able to remove the seat with the case in place. Use a marker to mark the master puck location on the case.



Step 10 Place the case on a table or other work surface. Remove the 4 flat head screws holding the Slider plate onto the motorcycle. Place the Slider plate with the pucks installed onto the case.



Step 11 Locate the puck mark on the case and align the master puck with the mark as it was on the bike. Adjust the box side to side and make any final adjustments to the location.



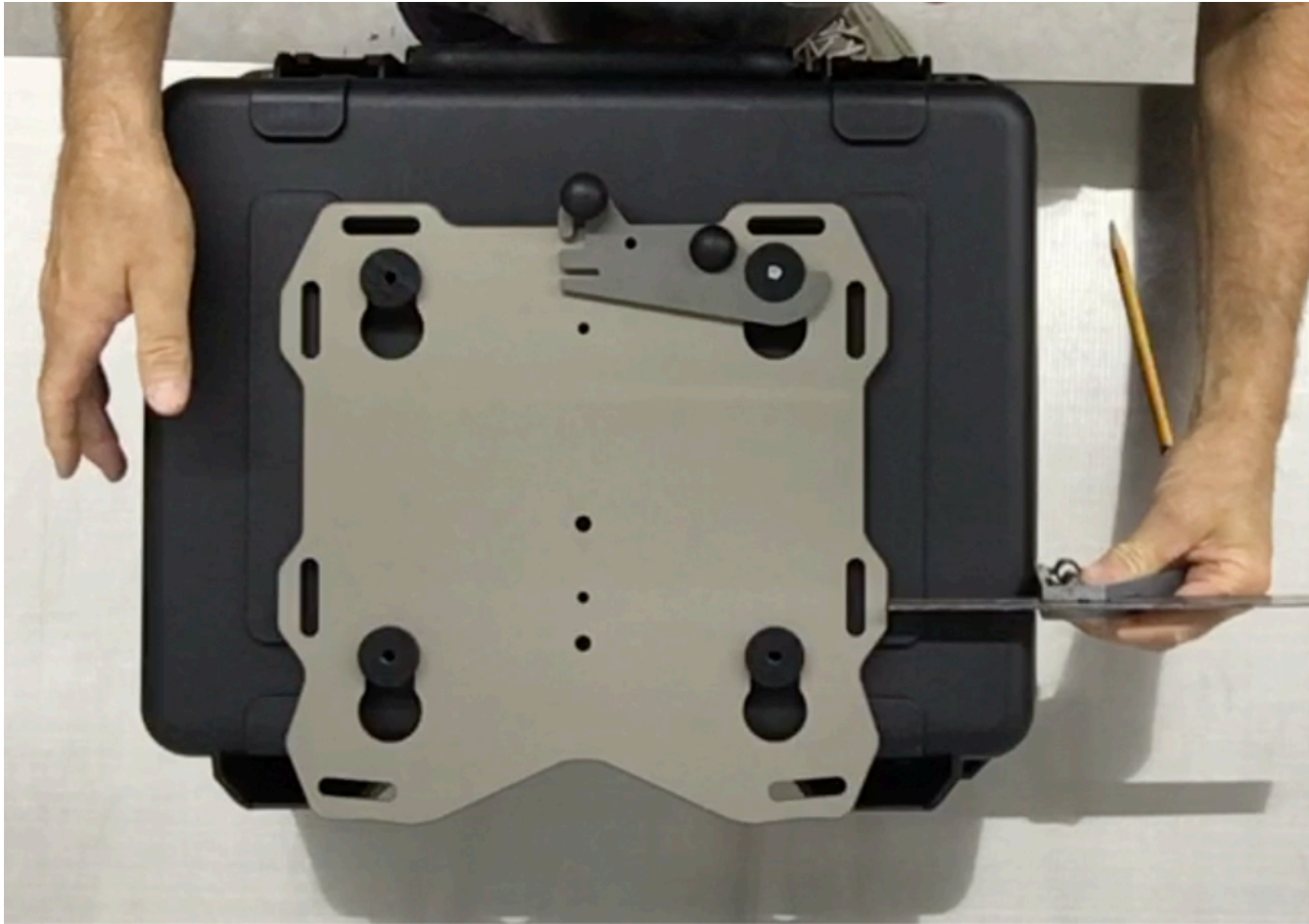
Step 12 With one hand apply downward force on the Slider plate, use your other hand to drill the case. With a ¼" drill bit and electric drill use the master puck as a drill guide and drill a pilot hole through the box.



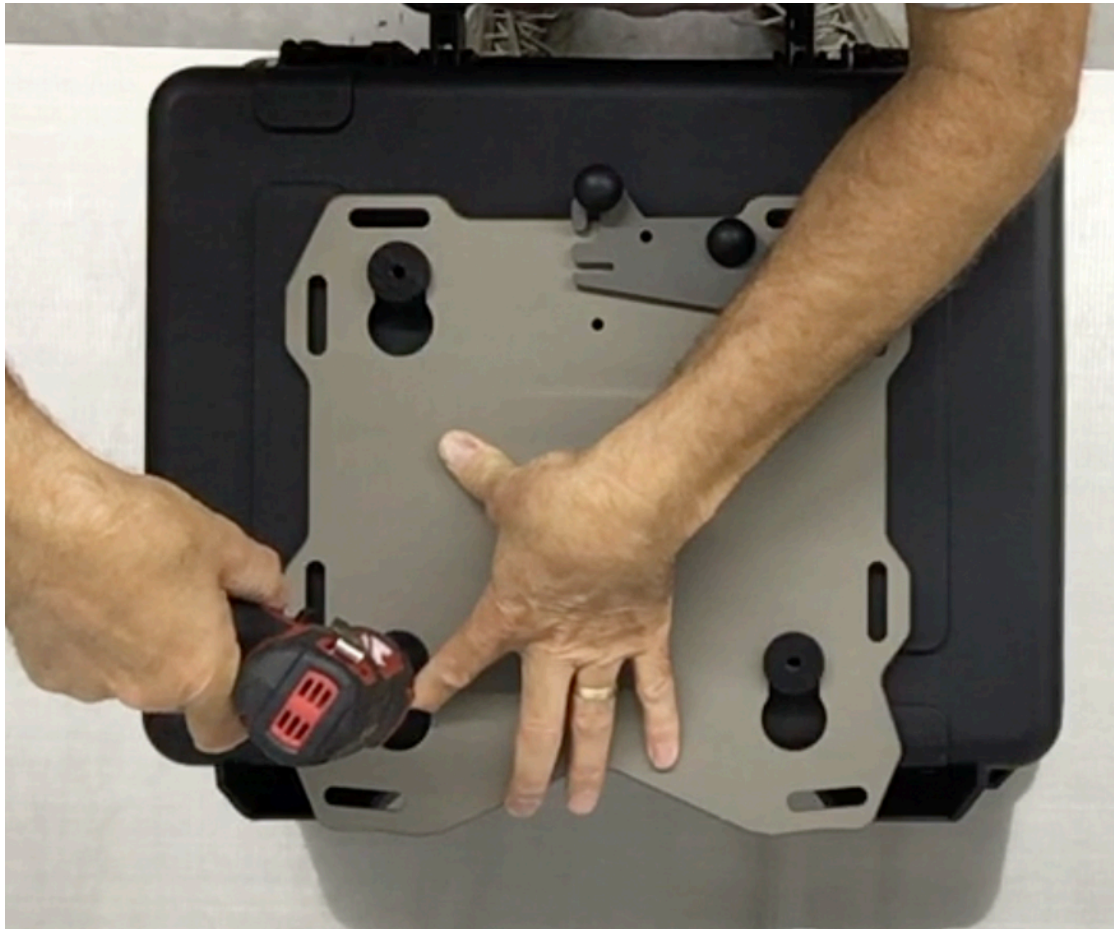
Step 13 Remove the Slider plate from the case. Use the $21/64$ " drill bit and electric drill to enlarge the $1/4$ " pilot hole.



Step 14 Use a M8 x 38 flat washer and the M8 button head cap screw to attach the master puck to the case.



Step 15 Place the Slider plate with the other 3 pucks onto the master puck and latch it into position. Square up the plate and box to each other (last chance).

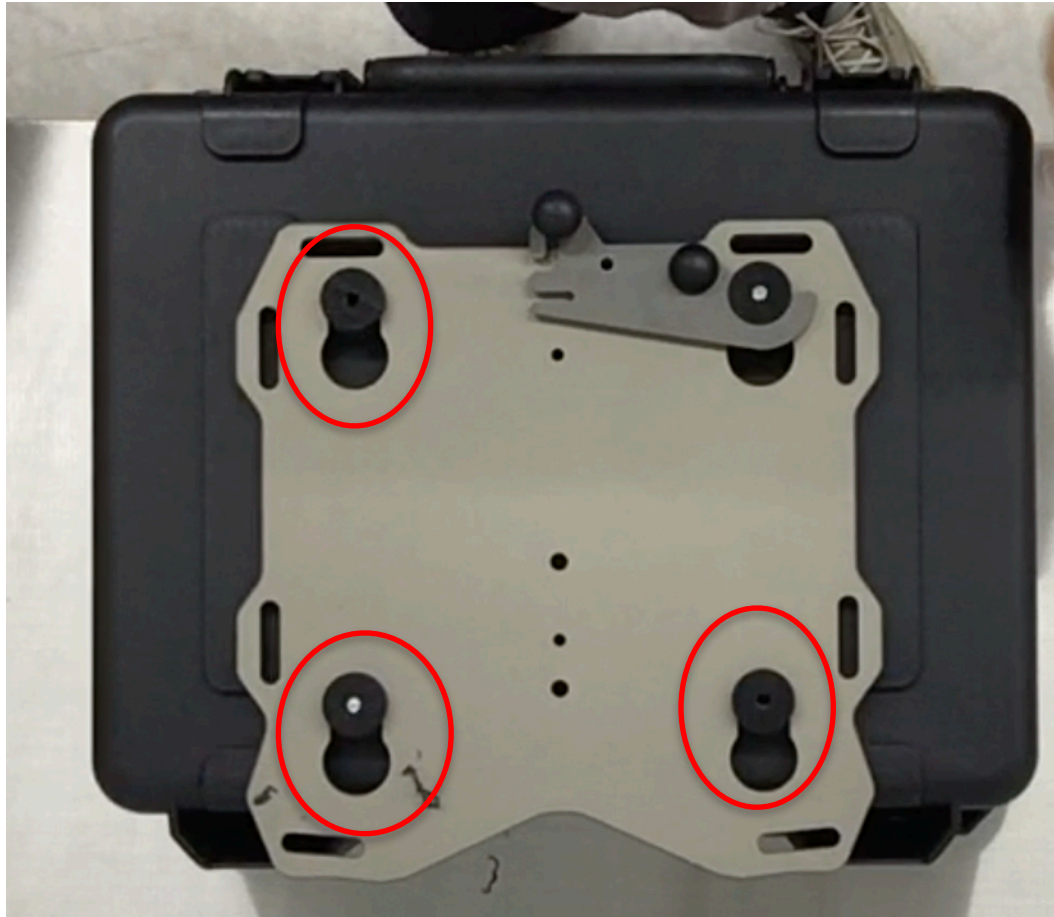


Step 16 With the ¼” drill bit, use the puck diagonally across from the master puck as a drill guide and drill a second pilot hole in the case.

Make sure the pucks are seated in the keyholes before drilling!!

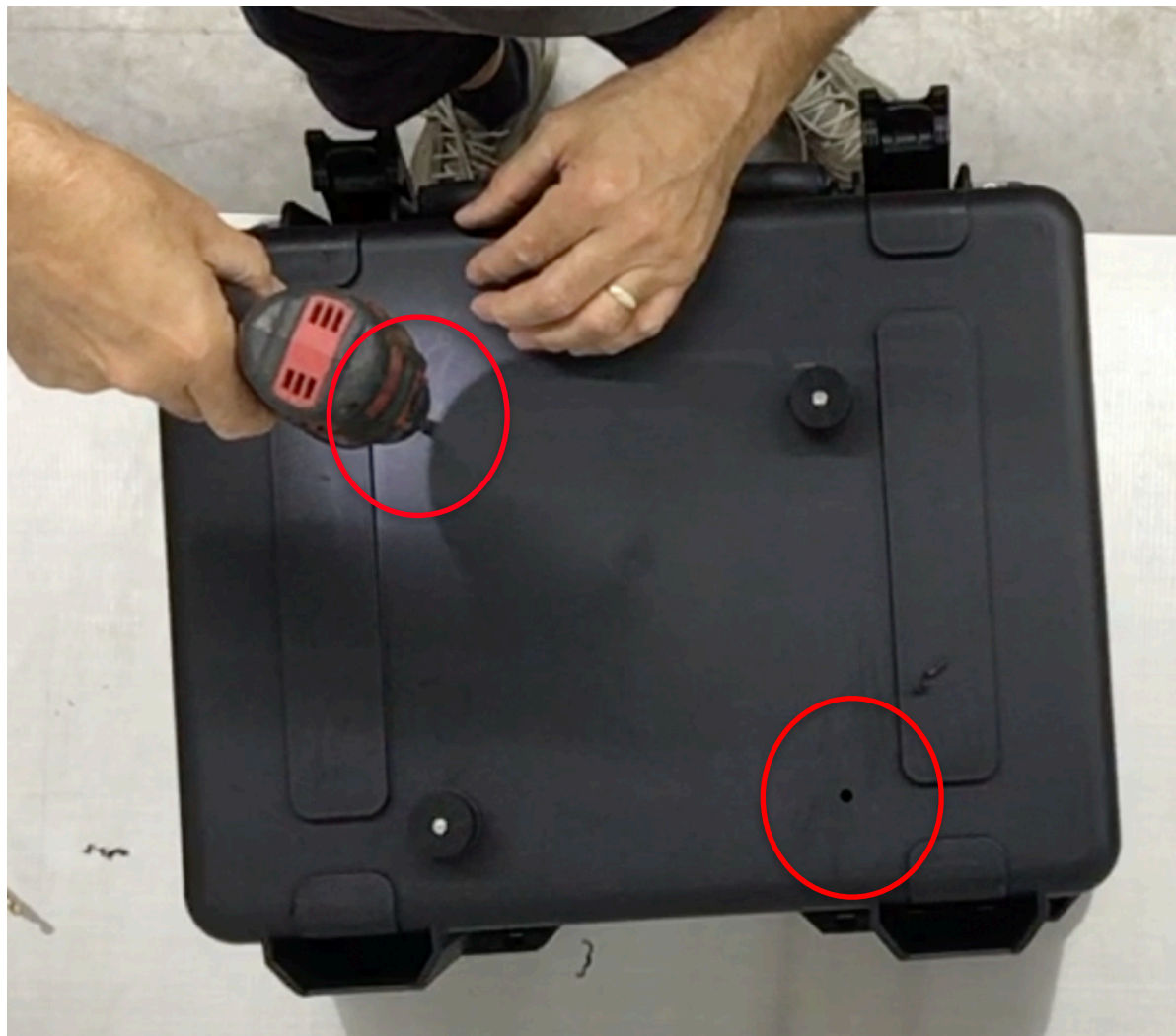


Step 17 Remove the slider plate from the case and use the $1/4"$ drill bit to enlarge the second $1/4"$ pilot hole.



Step 18 Attach the second puck to the case with the M8 hardware. Place the Slider rack on the case and latch it into position. With the 1/4" drill bit use the 2 remaining pucks as drill guides and drill the last two 1/4" holes.

Make sure the pucks are seated in the keyholes before drilling!!



Step 19 Remove the Slider rack and pucks from the case. Use the 21/64" drill bit and electric drill to enlarge the last 2 1/4" pilot holes.



Step 20 Install all pucks onto the case using the M8 flat washers and M8 button head cap screws. Lightly snug the puck screws at this time, later they will be fully tightened.



Step 21 Re-Install the BRE plate using step 1 through 5.

Step 22 Use a 4mm driver and 10mm open end wrench to tighten all eight M6 lock nuts. **Note:** Clamp halves will be closed together when tightened correctly, do not over tighten.



Step 23 Install the case onto rack and latch it into place with the cam lever.



Step 24 Torque the puck screws to 9 ft. lbs. or 12.2 Nm.



That completes the installation process. Test ride the motorcycle and then check all the fasteners for tightness. Also check the fasteners again after 1000 miles and at every oil change after that.

For security a 3/16" pad lock can be used to lock the cam lever in the closed position.

Thank You

