



Instructions for attaching 1560 adapter to Pelican 1560

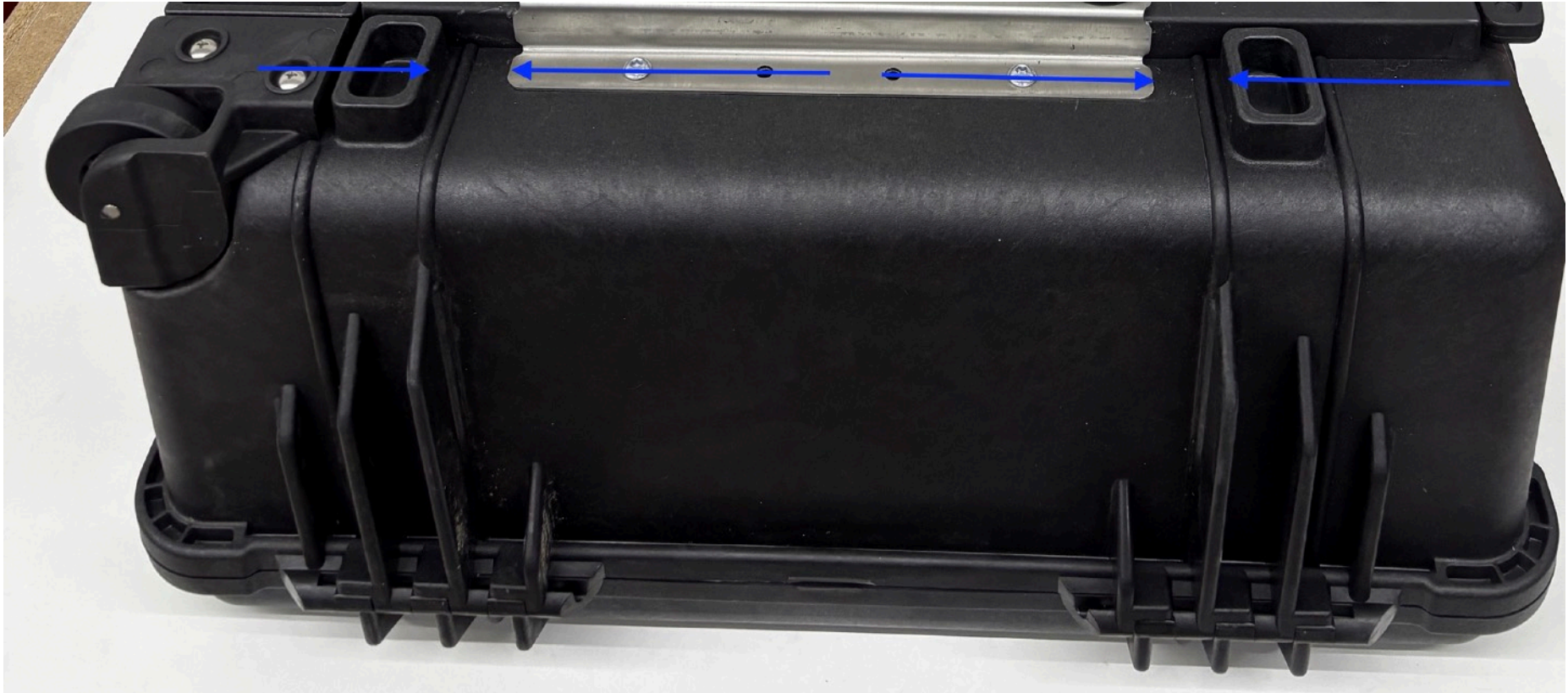
Please read through instructions completely before starting work.

Kit contents:

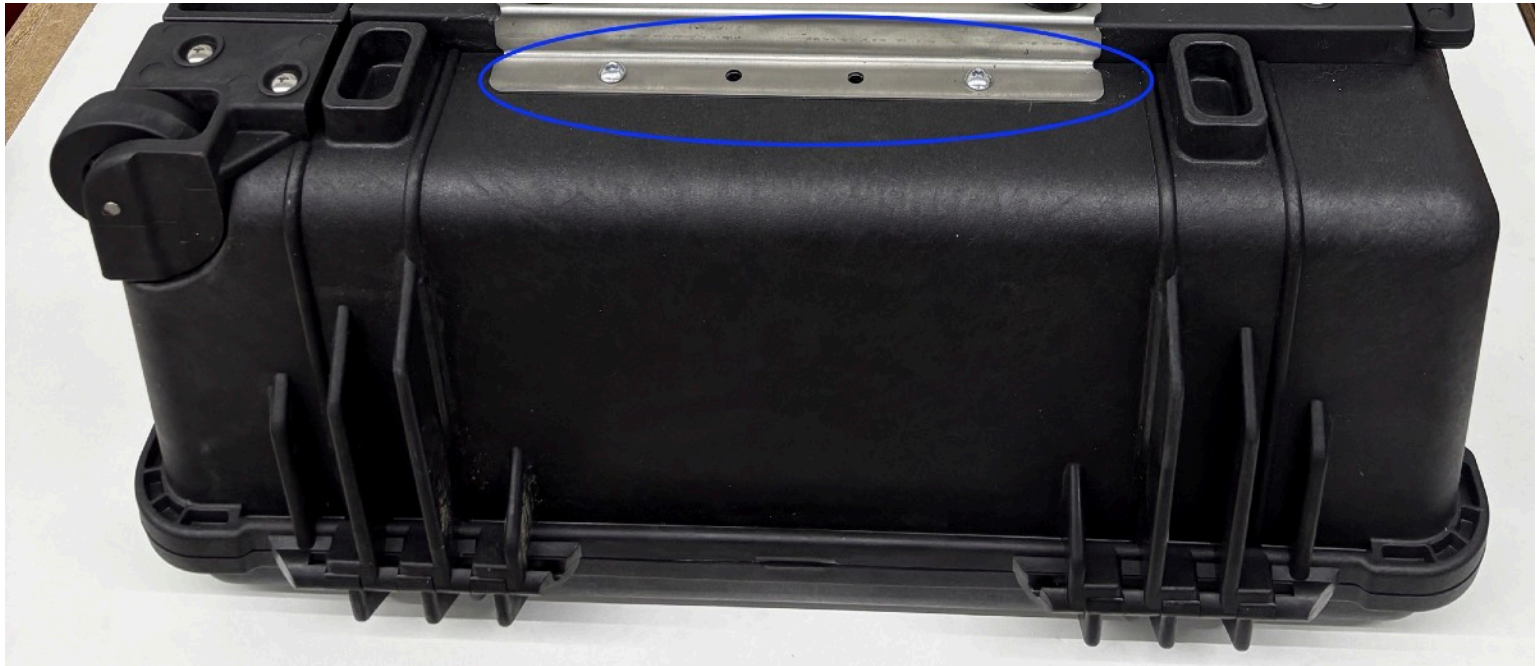
- 1 adapter plate
- 4 M8 jam nuts
- 8 1/4" x 5/8" button head screws
- 8 1/4" flat washers
- 8 1/4" lock nuts

Tools required:

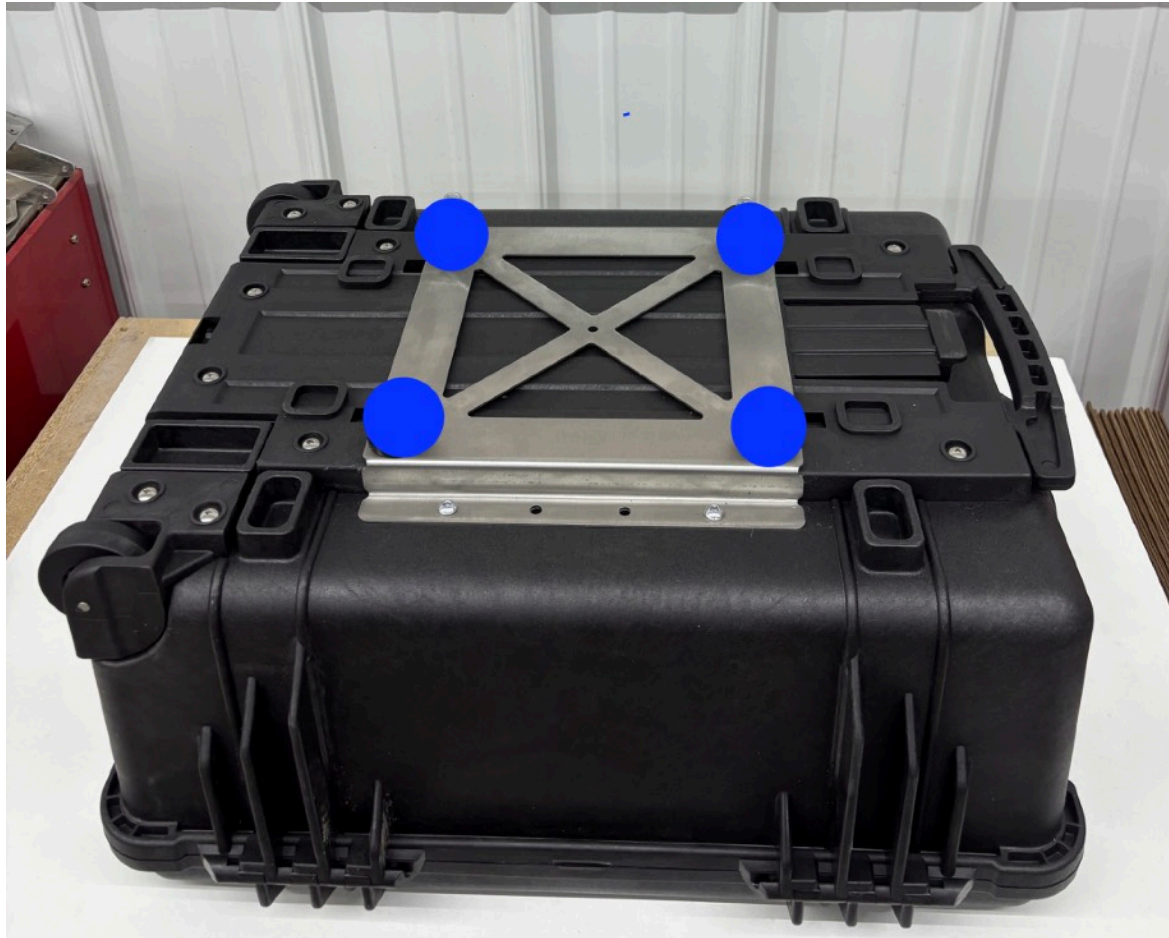
- Electric hand drill
- 1/4" drill bit
- 7/16" socket or combination wrench
- 13mm socket or combination wrench
- 5/32" hex wrench (Allen wrench)



Step 1 Lay the adapter plate on case as shown. Center the plate between the case feet as shown by the blue arrows.



Step 2 Use the adapter as a drill guide, drill one 1/4" hole in the case and then insert a 1/4"x 5/8" button head screw in the hole. Repeat with the other 7 holes, insert a screw after drilling each hole.
Note: It works best to drill the second hole on the opposite side of the adapter diagonally across from the first hole drilled.



Step 3 The 1560's handle cover will have to be removed to drill puck screw head clearance holes. Use the adapter plate as a template and mark the cover handle at the hole locations identified by the blue dots (a pencil or paint marker will work good for this).

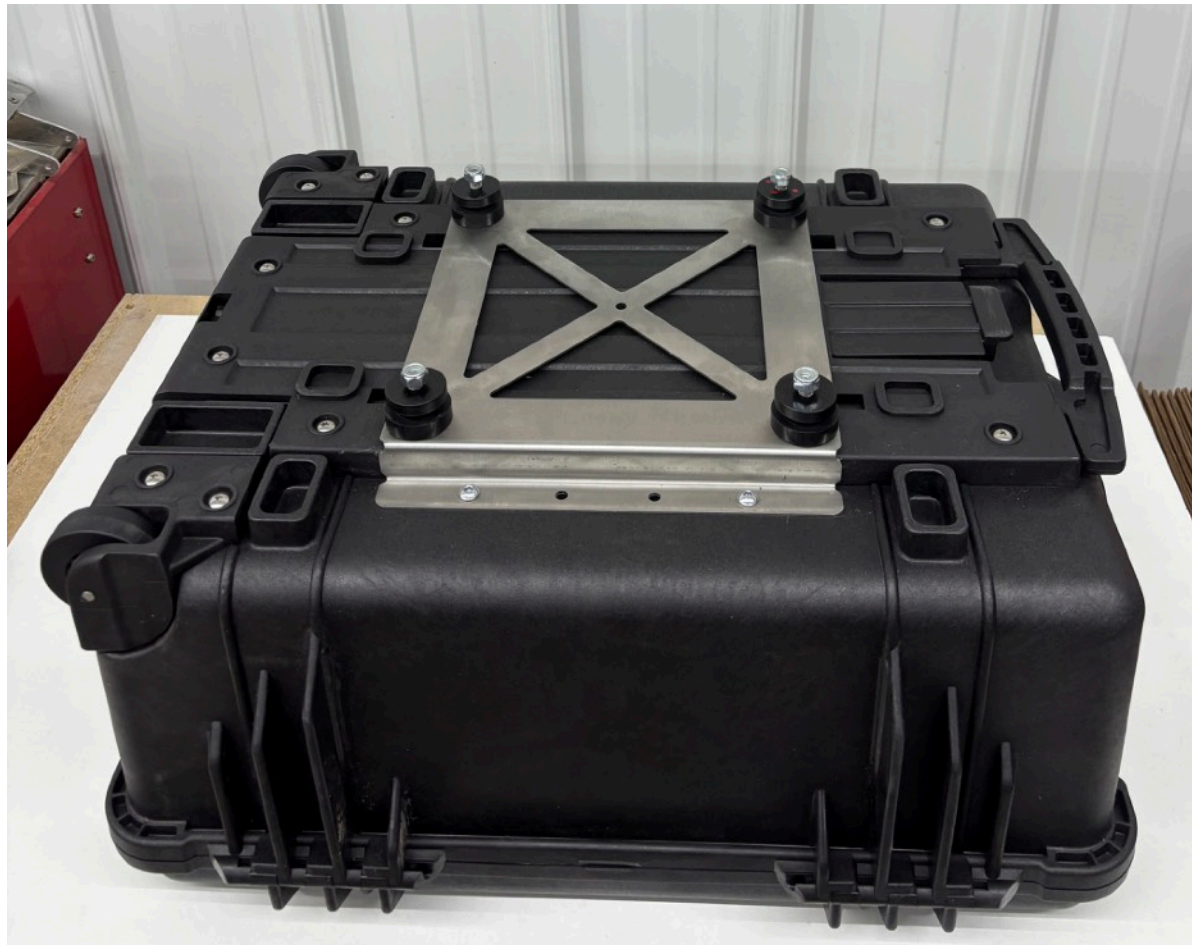


Step 4 Remove the screws holding the handle cover in place and remove the handle cover from the case.

Step 5 Use the 1/4" drill bit to drill 4 holes at the marked locations from step 3.

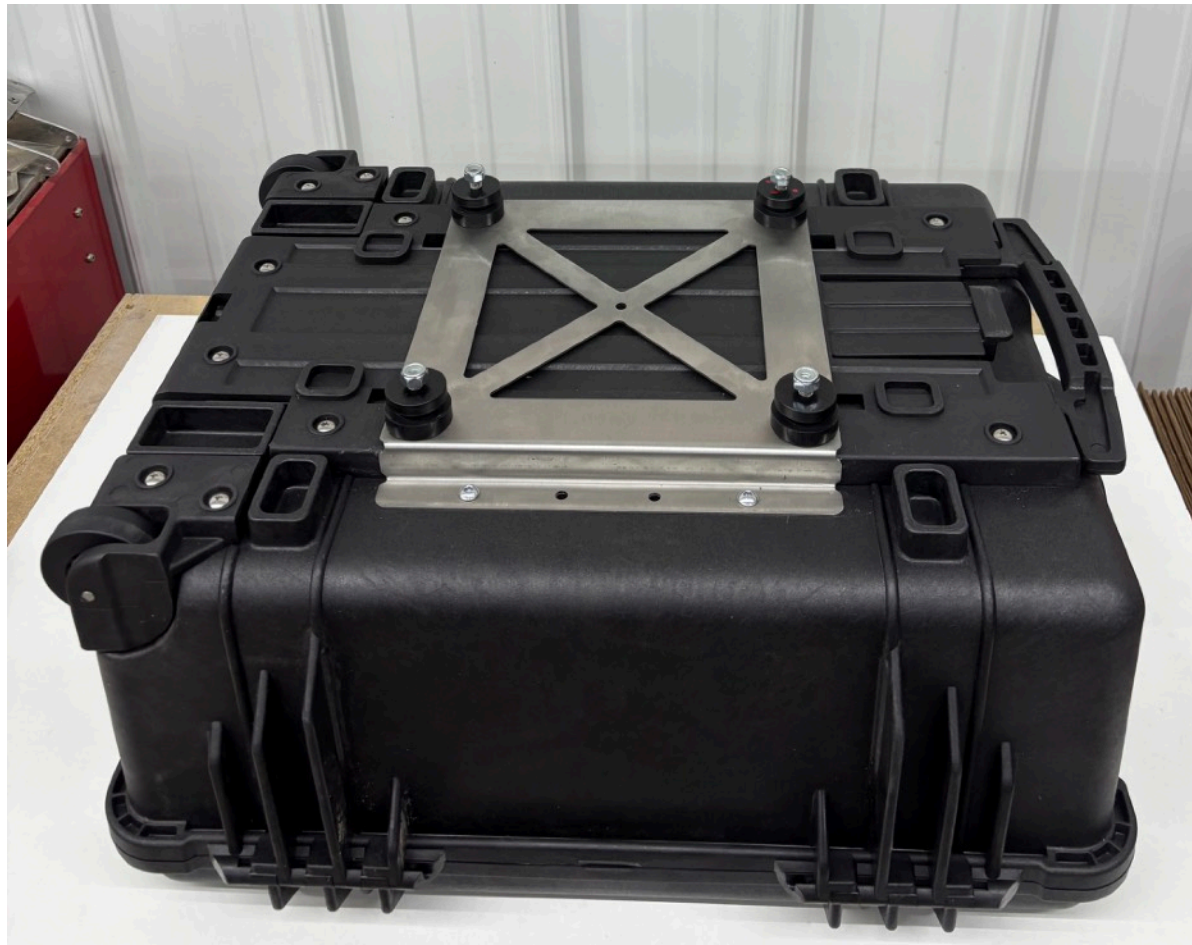


Sept 6 Use a step drill to enlarge the 1/4" holes to 3/4" holes.



Step 7 Re-install the handle cover. **Note:** be careful not to strip the screw bosses in the case.

Step 8 Attach the pucks to the adapter plate using the M8 x 30 button head screws. The large diameter of the puck faces the adapter plate. Tighten the puck screws to 9 ft. lbs. Apply blue 242 Loctite to the M8 jam nuts. Thread and tighten the M8 jam nuts onto the puck screws with the 13mm wrench.



Step 9 Attach the adapter plate to the case using eight 1/4" x 5/8" button head screws, 1/4" flat washers and 1/4" lock nuts. Fully tighten all 8 lock nuts with the hex wrench and 7/16" combination wrench. **Note1:** The flat washers must be located inside the case. **Note 2:** The button head screw can be inserted from outside the case (shown above) or from the inside of the case which ever orientation is preferred.



That completes the adapter installation. The case can now be mounted to your BRE Slider rack. Thanks for choosing BRE.