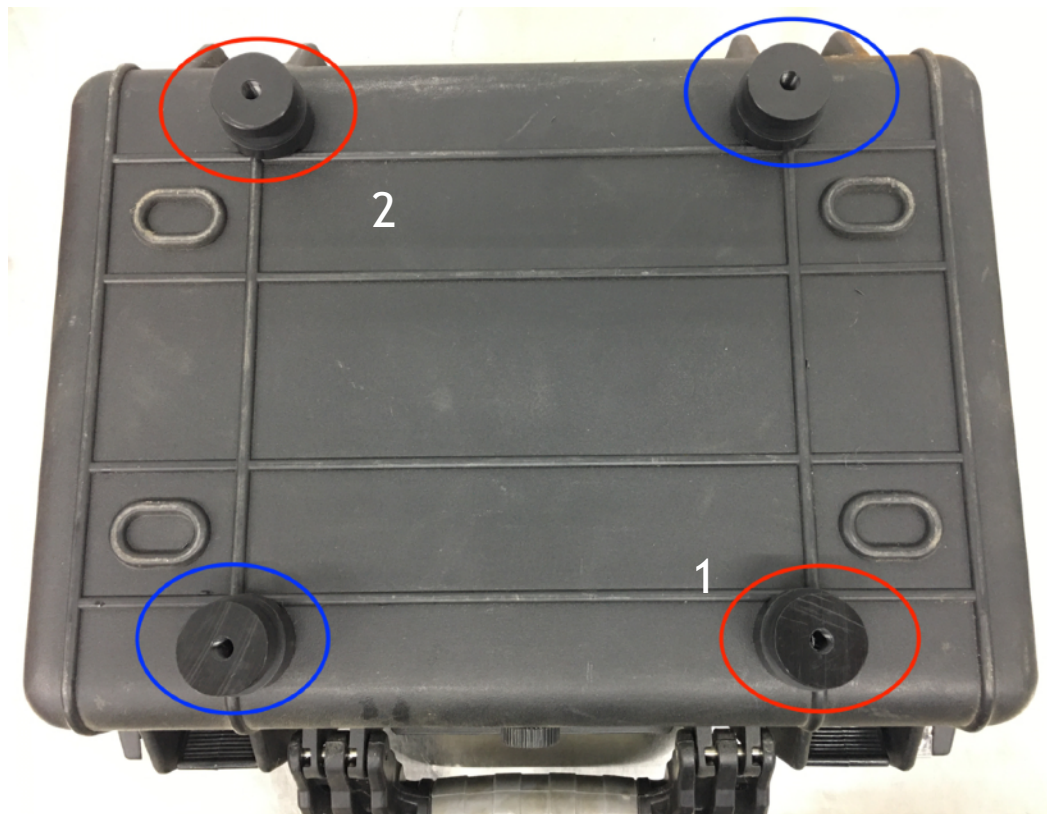




## Puck Kit for Harbor Freight 3800 Apache or Strongway 16" Case



The 3800 Apache pucks are machined to fit in a very specific location. This is the only location the pucks will fit on the 3800 Apache or Strongway 16" case because of the case's small size. The photo shows the locations in relation to the case's ribs.



**Note:** The pucks are not identical. There are 2 RH (red) pucks and 2 LH (blue) pucks in this kit. The RH corner is always the lower RH corner (1) as shown in the photo, note where case handle is located. If the case was rotated 180 degrees then corner 2 would be the lower RH corner. The machined grooves in the puck places the threaded hole on the inside of the vertical rib and to the outside of the horizontal ribs.



**Step 1** Slide one of the “blue” pucks into the Slider plate and latch the cam lever onto the puck. This puck is considered the “master puck”.  
**Note:** When using the 3800 Apache case/ Strongway 16, it should be drilled before installing the Slider plate onto the motorcycle.



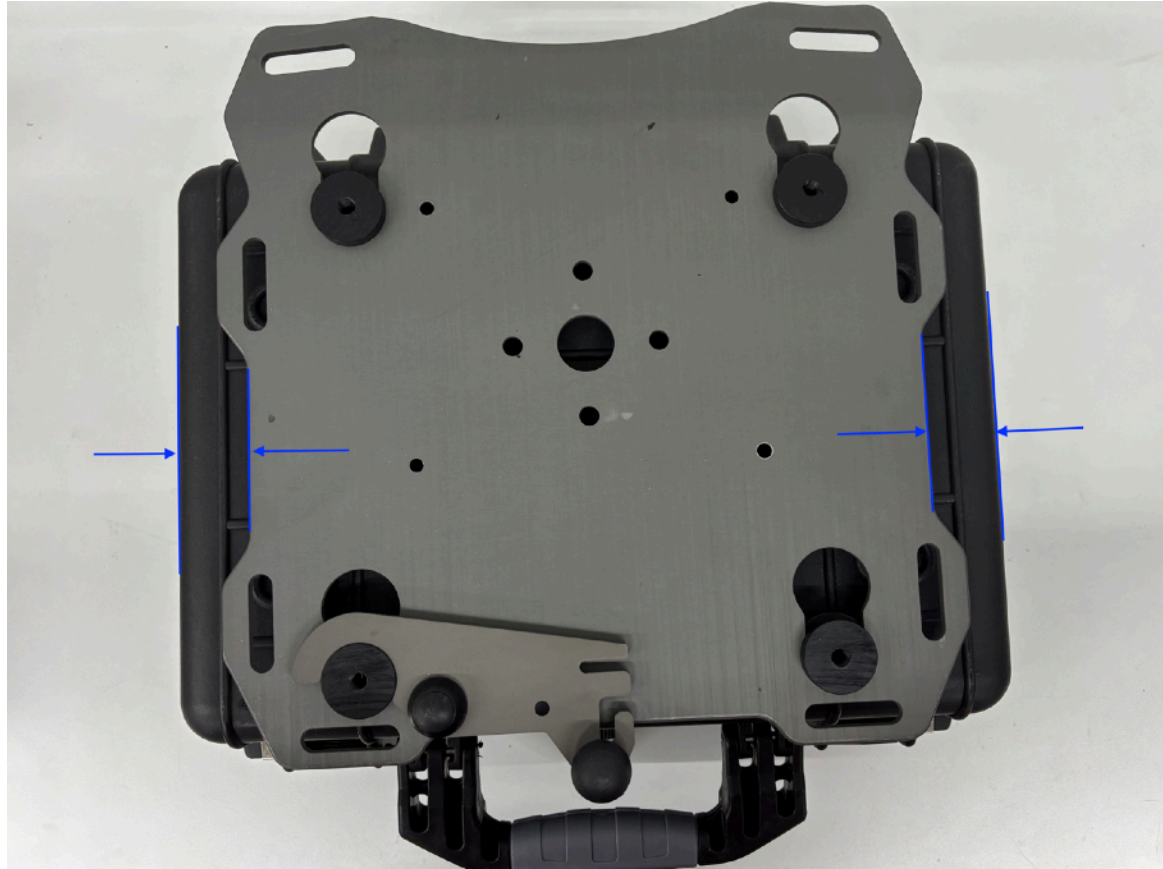
**Step 2** locate the other Red and Blue pucks and insert them into the Slider plate in the correct location, see Note on page 1.





**Step 3** Rotate the pucks until the ribs on the case drop into the machined grooves in the pucks. **Note:** Verify the pucks are fully seated in the keyholes and verify the grooves and ribs are lined up allowing the pucks to sit flat on the case.





**Step 4** Using a rule or combination square verify the side to side location is equal. Once the checks in step 3 & 4 are complete you are ready to drill.



**Step 5** With one hand apply downward force on the Slider plate, use your other hand to drill the case. With a  $\frac{1}{4}$ " drill bit and electric drill use the master puck as a drill guide and drill a pilot hole through the case.

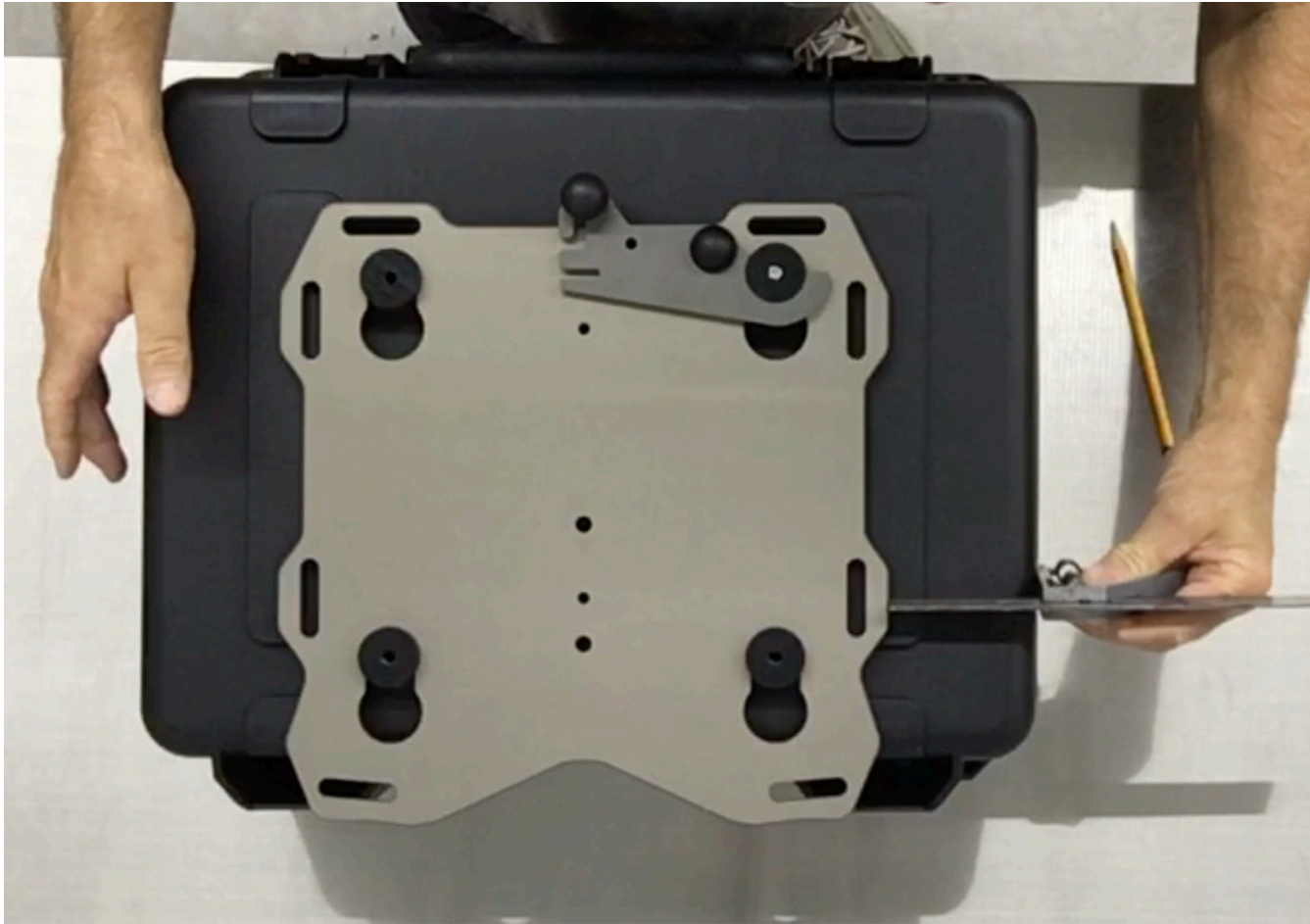


**Step 6** Remove the Slider plate from the case. Use the 21/64" drill bit and electric drill to enlarge the 1/4" pilot hole.





**Step 7** Use a M8 x 38 flat washer and the M8 button head cap screw to attach the master puck to the case.



**Step 8** Place the Slider plate with the other 3 pucks onto the master puck and latch it into position. Square up the plate and box to each other (last chance). **Note: Apache 3800 case** verify the case ribs are seated in the puck grooves.



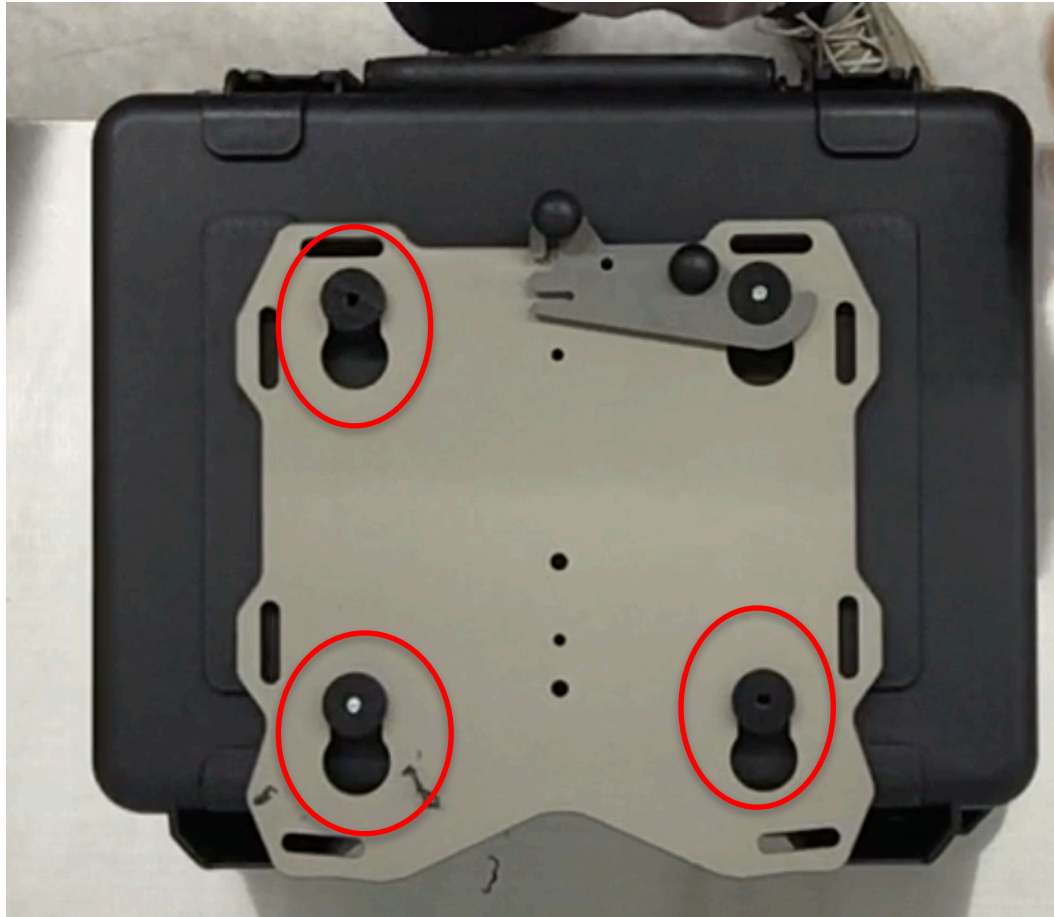
**Step 9** With the ¼” drill bit, use the puck diagonally across from the master puck as a drill guide and drill a second pilot hole in the case.

**Make sure the pucks are seated in the keyholes before drilling!!**



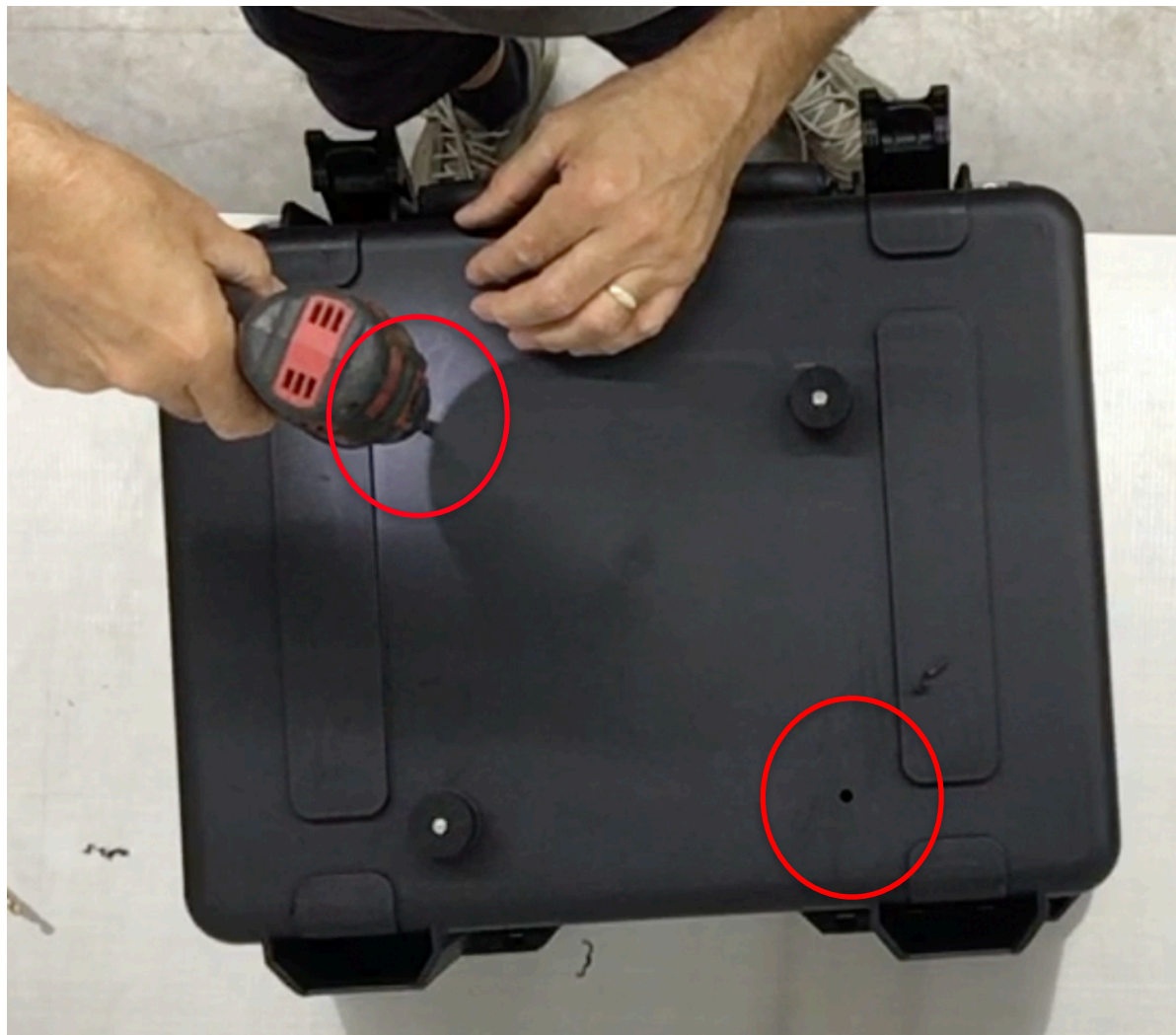


**Step 10** Remove the Slider plate from the case and use the 21/64" drill bit to enlarge the second 1/4" pilot hole.



**Step 11** Attach the second puck to the case with the M8 hardware. Place the Slider rack on the case and latch it into position. With the 1/4" drill bit use the 2 remaining pucks as drill guides and drill the last two 1/4" holes **Note:** Apache 3800 case verify the case ribs are seated in the puck grooves.

**Make sure the pucks are seated in the keyholes before drilling!!**



**Step 12** Remove the Slider rack and pucks from the case. Use the 21/64" drill bit and electric drill to enlarge the last two 1/4" pilot holes.





**Step 13** Install all pucks onto the case using the M8 flat washers and M8 button head cap screws. Lightly snug the puck screws at this time.



**Step 14** Once the Slider rack is installed on the motorcycle slide the case into the Slider and latch the cam lever.  
Torque the four puck screws to 9 ft.lb. or 12.2 Nm.



This completes the special instructions for the Apache 3800/Strongway 16" case. Please revert to your motorcycle's specific installation instruction to complete the installation.