



- Back Road Equipment  
Slider Rear Rack  
Installation Instructions  
Triumph Tiger 900 All

Tools Required:

5 mm hex wrench  
12 mm socket 3/8" drive  
5 mm hex bit 3/8" drive  
3/8" drive ratchet  
3/8" drive extension  
3/8" drive ft. lbs. torque  
wrench  
1/4" drill bit  
21/64" drill bit  
electric hand drill  
marking pen  
242 Blue Loctite thread locker  
or similar

- Kit Contents:
- 1 Slider Plate with cam lever
- 4 - attachment pucks
- 4 - M8 Button Head Screws
- 4 - 1.5" diameter stainless steel washer
- 4 - M8 x 50 SS flat head screws
- 2 - 22 mm OD x 9.5 mm ID x 25 mm long aluminum spacer
- 2 - 22 mm Od x 9.5 ID x 20.6 mm long aluminum spacer
- 2 - 38 mm OD x 9.5 ID x 5 mm long aluminum spacer

Please go to [backroadequipment.com](http://backroadequipment.com) for installation instructions.

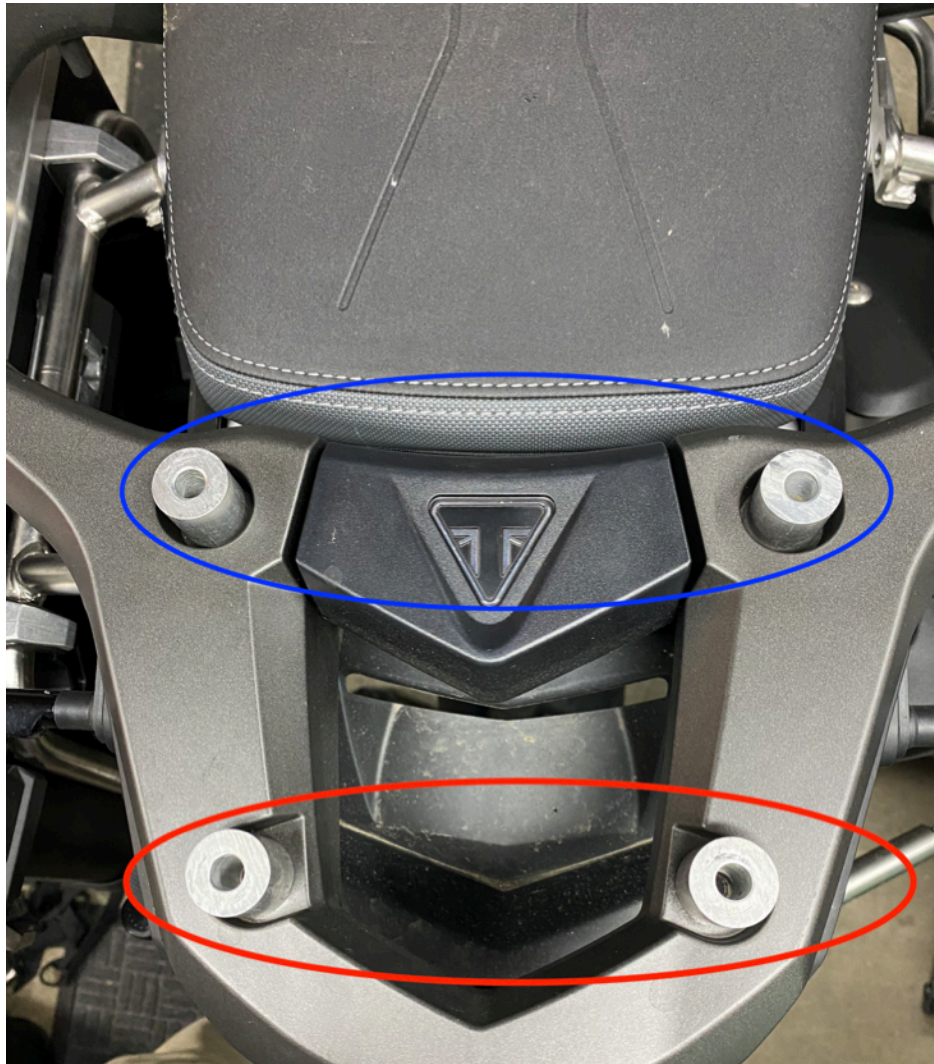
**Do not exceed the OEMs  
recommendation for weight on the  
rear rack of the motorcycle!!**

In order to properly locate the top box  
it will be necessary to install, remove  
and re-install the BRE rack, please keep  
this in mind and read through the  
instructions completely before starting  
the work.

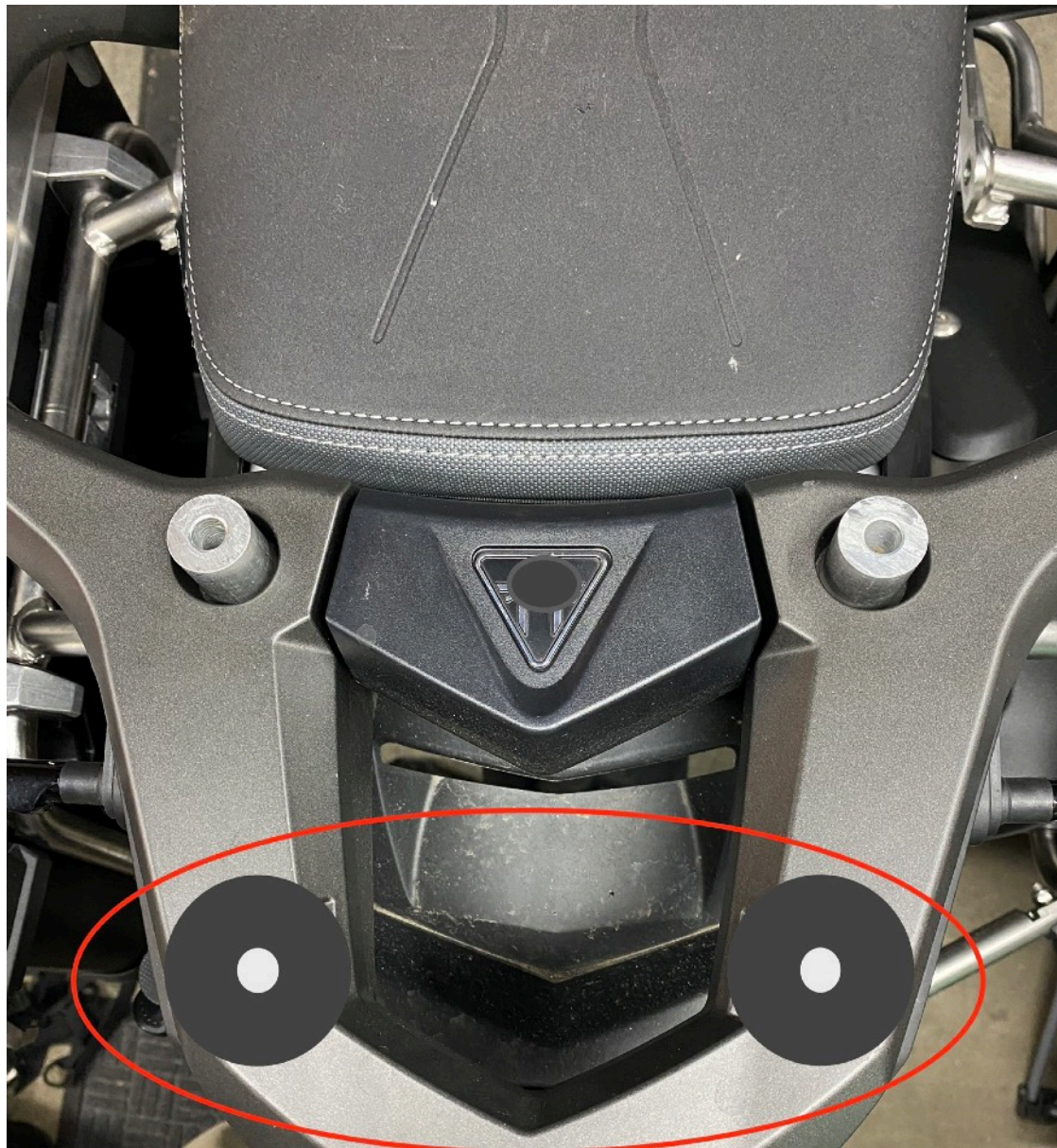


## **Step 1** Remove the 4 grab handle screws.

These screws will not be used to install the rack. Save these screw in case you ever want to remove the Slider.



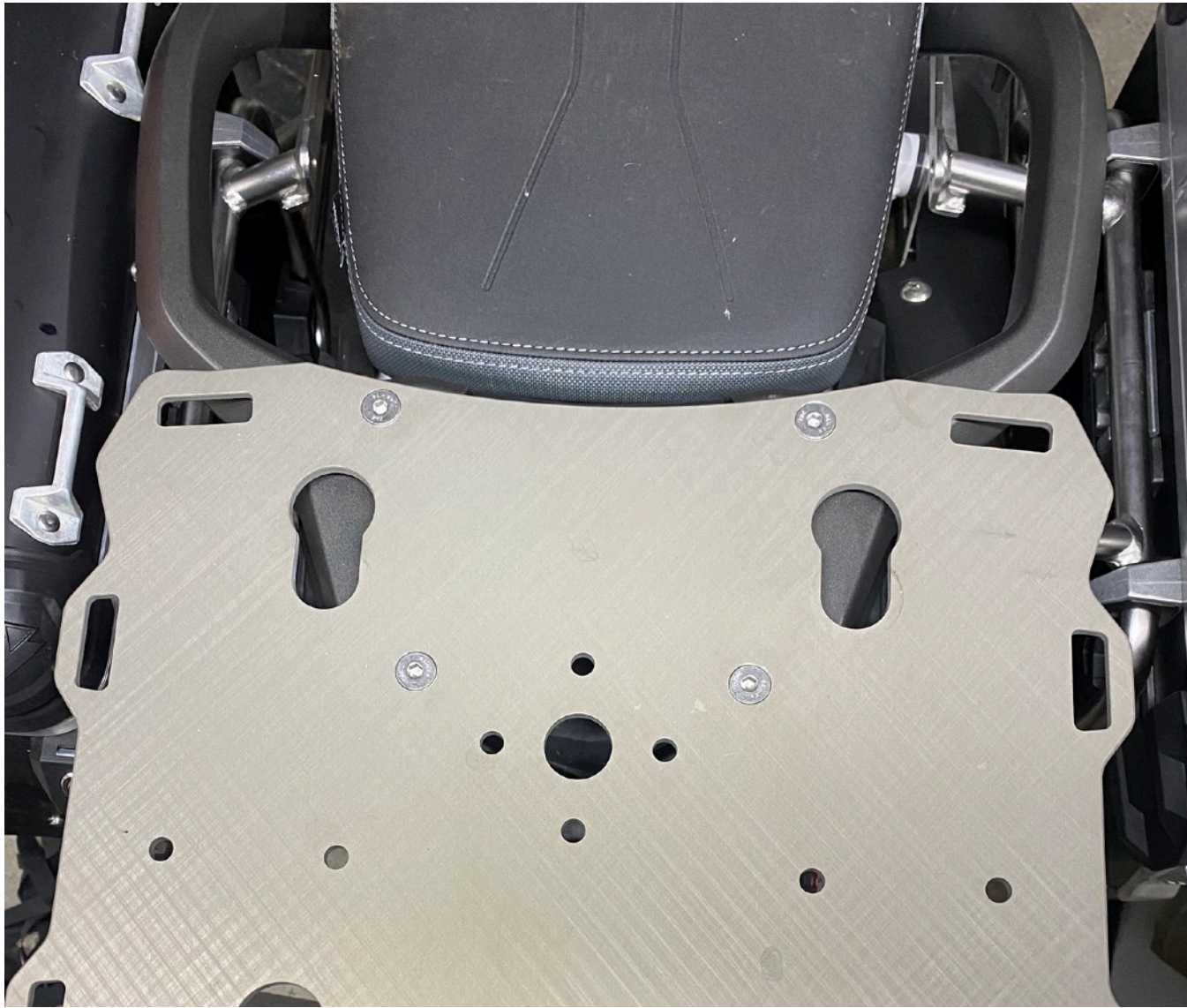
**Step 2** Insert the 22 mm OD x 9.5 mm ID x 25 mm aluminum spacers (**long**) closest to the seat (blue). Install the 22 mm OD x 9.5 ID x 20.6 mm aluminum spacers (**short**) to the rear of the bike (red).



**Step 3** Place one 38 mm OD x 9.5 ID x 5 mm long aluminum spacer over each of the short (rear) spacers.



**Step 4** Position plate over the spacers as shown. Insert the screws into the four holes and through the spacers. **Note: Add Loctite to the screws at this time if you are not going to be removing the plate for locating case holes.**



**Step 5 Using a 5mm hex wrench snug the screws. Note: If you are not removing the plate for locating case holes, torque the screws to 17 in.lb (23.0 Nm).**



**Step 7** Install one of the black plastic pucks into the key hole with the cam lever. Lock the puck into place with the cam lever. This will be referred to as the “Master Puck”

Note: Remove the large washer and screw from the puck before putting into the plate. The screws and washers are installed into the pucks for shipment as part of our QA process.

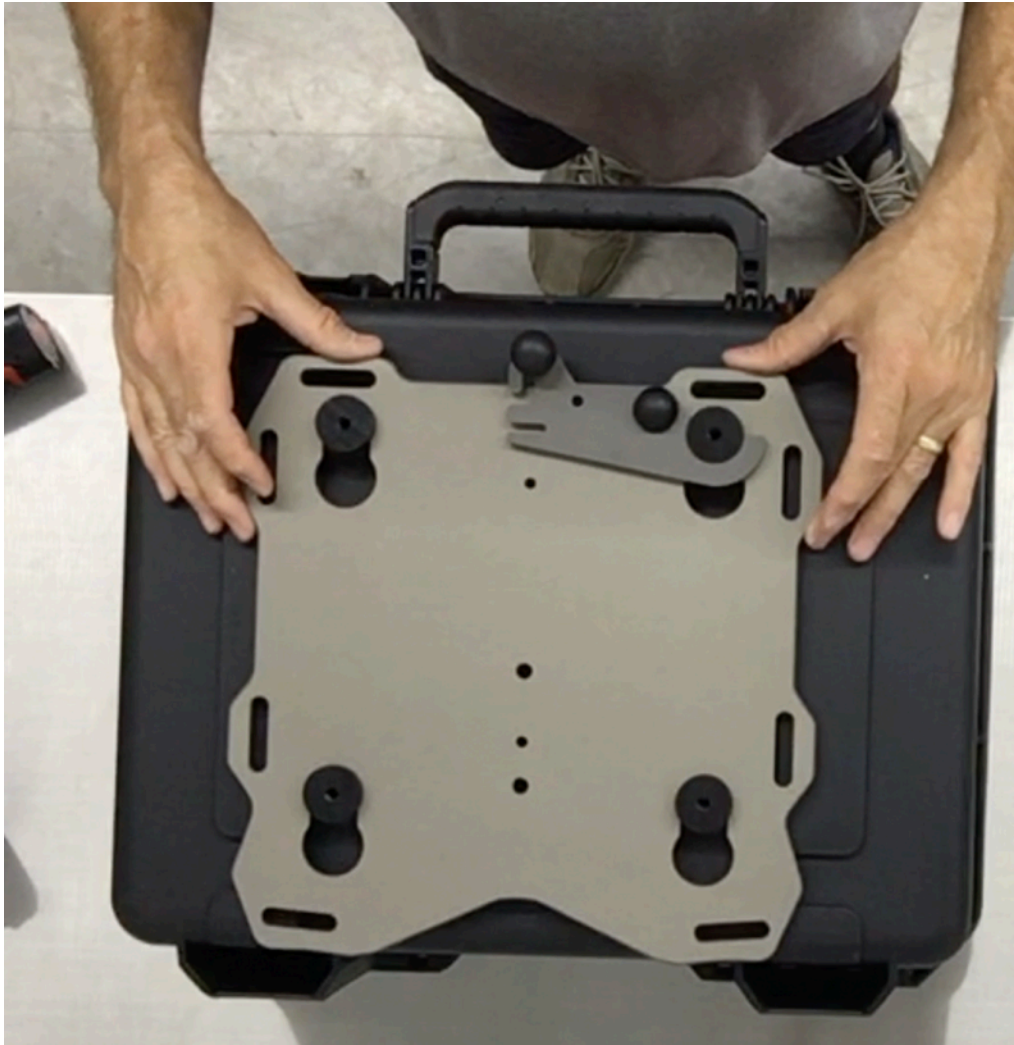




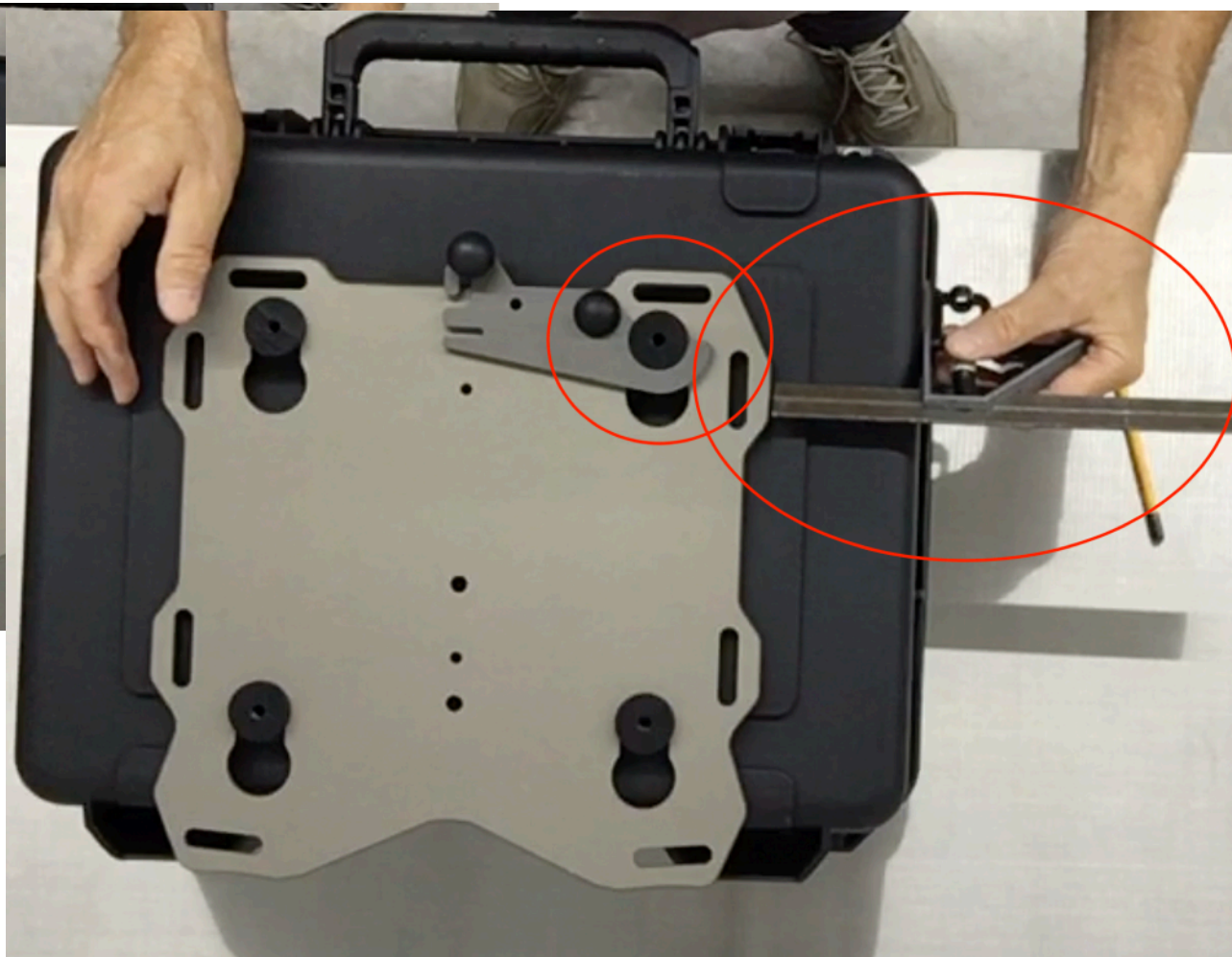
**Step 8** Insert the 3 remaining pucks into the keyholes in the plate.



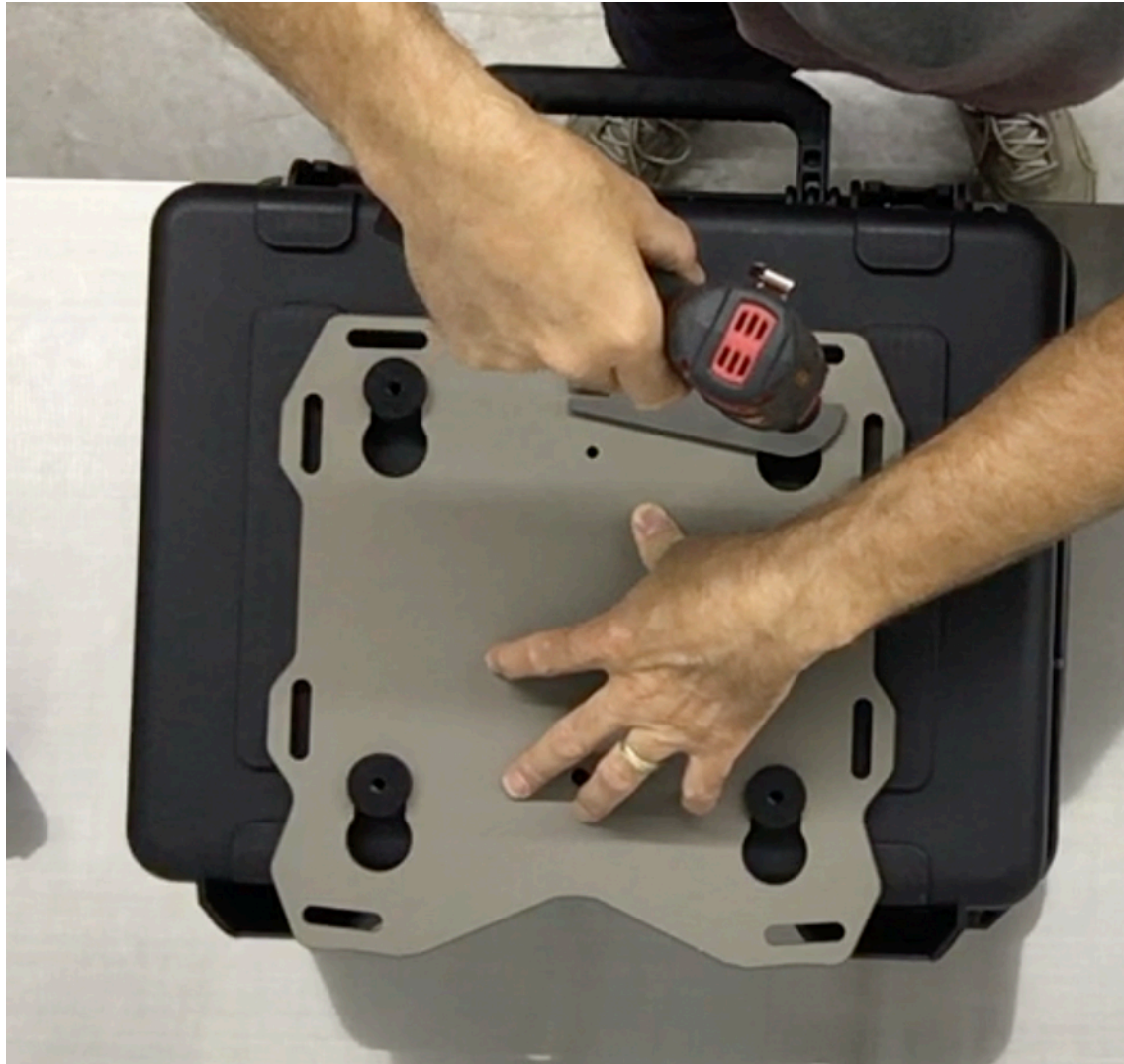
**Step 9** Position the case on top of the pucks. Determine the for/aft location (side to side will be determined later). Position the case as far forward as possible without interfering with passenger comfort. Also consider if you will be placing any gear on the seat or if you want to be able to remove the seat with the case in place. Use a marker to mark the master puck location on the case.



**Step 10** Place the case on a table or other work surface. Remove the 4 screws holding the Slider plate onto the motorcycle. Place the Slider plate with the pucks installed onto the case.



**Step 11** Locate the puck mark on the case and align the master puck with the mark as it was on the bike. Adjust the box side to side and make any final adjustments to the location.



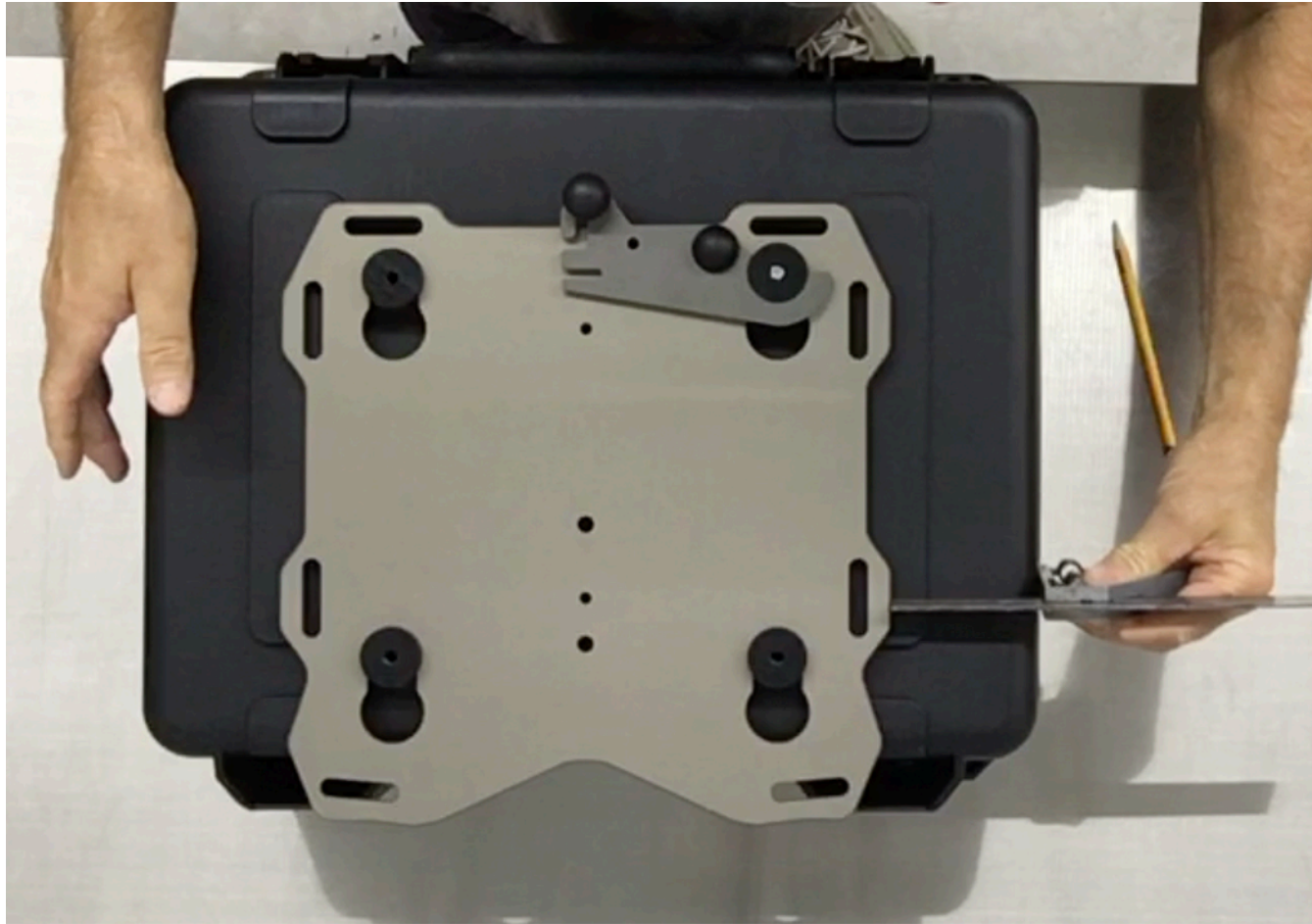
**Step 12** With one hand apply downward force on the Slider plate, use your other hand to drill the case. With a ¼” drill bit and electric drill use the master puck as a drill guide and drill a pilot hole through the box.



**Step 13** Remove the Slider plate from the case. Use the  $\frac{21}{64}$ " drill bit and electric drill to enlarge the  $\frac{1}{4}$ " pilot hole.



**Step 14** Use a M8 x 38 flat washer and the M8 button head cap screw to attach the master puck to the case.



**Step 15** Place the Slider plate with the other 3 pucks onto the master puck and latch it into position. Square up the plate and box to each other (last chance).



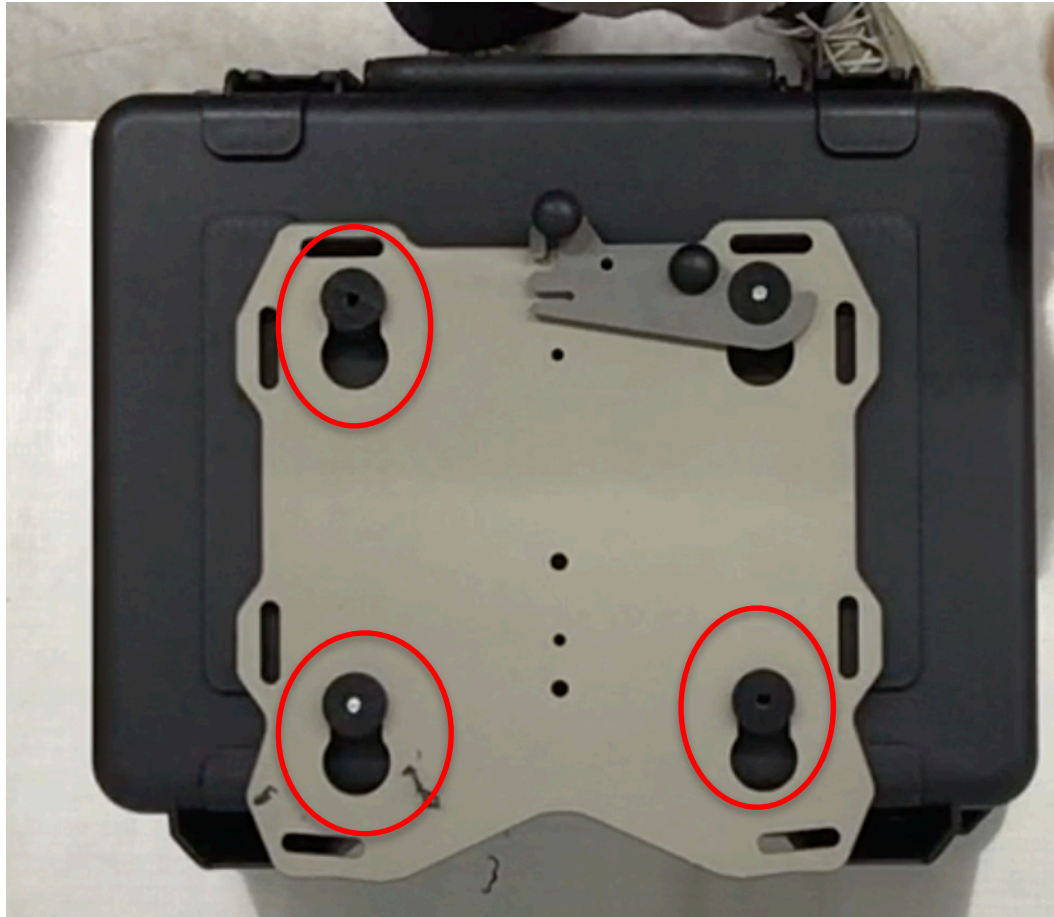


**Step 16** With the ¼” drill bit, use the puck diagonally across from the master puck as a drill guide and drill a second pilot hole in the case.

**Make sure the pucks are seated in the keyholes before drilling!!**

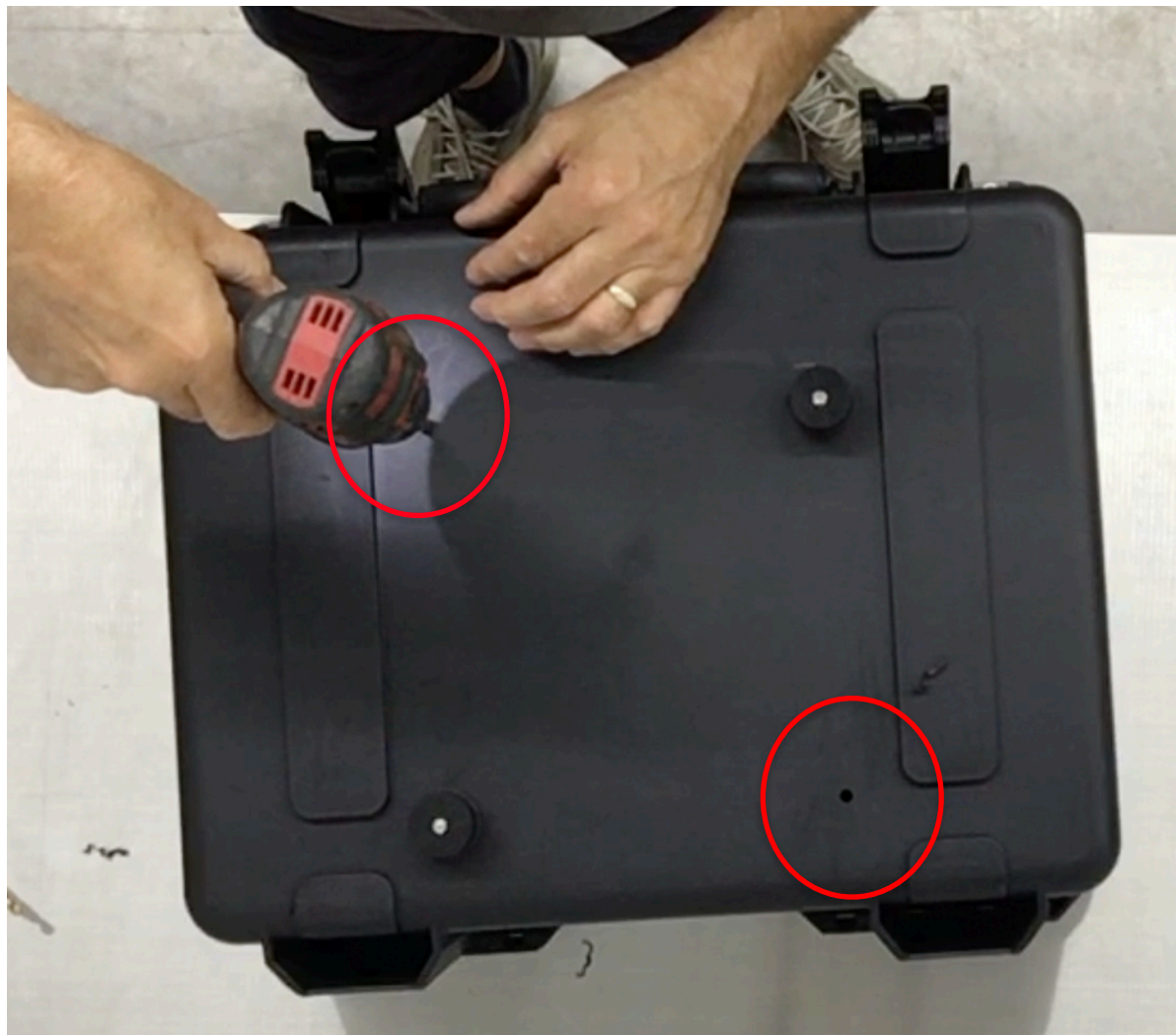


**Step 17** Remove the slider plate from the case and use the  $1\frac{1}{64}$ " drill bit to enlarge the second  $\frac{1}{4}$ " pilot hole.



**Step 18** Attach the second puck to the case with the M8 hardware. Place the Slider rack on the case and latch it into position. With the ¼” drill bit use the 2 remaining pucks as drill guides and drill the last two ¼” holes.

**Make sure the pucks are seated in the keyholes before drilling!!**



**Step 19** Remove the Slider rack and pucks from the case. Use the 21/64" drill bit and electric drill to enlarge the last 2 1/4" pilot holes.



**Step 20** Install all pucks onto the case using the M8 flat washers and M8 button head cap screws. Lightly snug the puck screws at this time, later they will be fully tightened.



**Step 21** Apply blue 242 Loctite or equivalent the four M8 flat head screws. Re-Install the BRE plate using step 2 through 4.

**Step 22** Torque the screws to 17 in.lb (23.0 Nm).



**Step 23** Install the case onto rack and latch it into place with the cam lever.



**Step 24** Torque the puck screws to 9 ft. lbs. (12.2 Nm).





For security a 3/16" Master 130D pad lock can be used to lock the cam lever in the closed position. Ace Hardware Item#52730

That completes the installation process. Test ride the motorcycle and then check all the fasteners for tightness. Also check the fasteners again after 1000 miles and at every oil change after that.

# Thank You

