



- Back Road Equipment
Slider Rear Rack
Installation Instructions
BMW R1200RT 2014 -
2018 & R1250RT

Tools Required:

10 mm combination wrench

4 mm hex wrench

5 mm *ball* hex wrench

¼" drill bit

21/64" drill bit

electric hand drill

marking pen

3/8" drive torque wrench

3/8" extension

5 mm hex drive socket

- Kit Contents:
- 1 Slider Plate with cam lever
- 4 - pucks
- 4 - M8 Button Head Screws
- 4 - 38 mm diameter aluminum washer
- 2 - M6 x 40 SHCS screws
- 4 - M6 x 25 SHCS screws
- 4 - M6 x 18 flat head screws
- 4 - M6 nylock nuts
- 1 - LH front Z bracket
- 1 - RH front Z bracket
- 1 - LH rear Z bracket
- 1 - RH rear Z bracket
- 6 - M6 flat washer

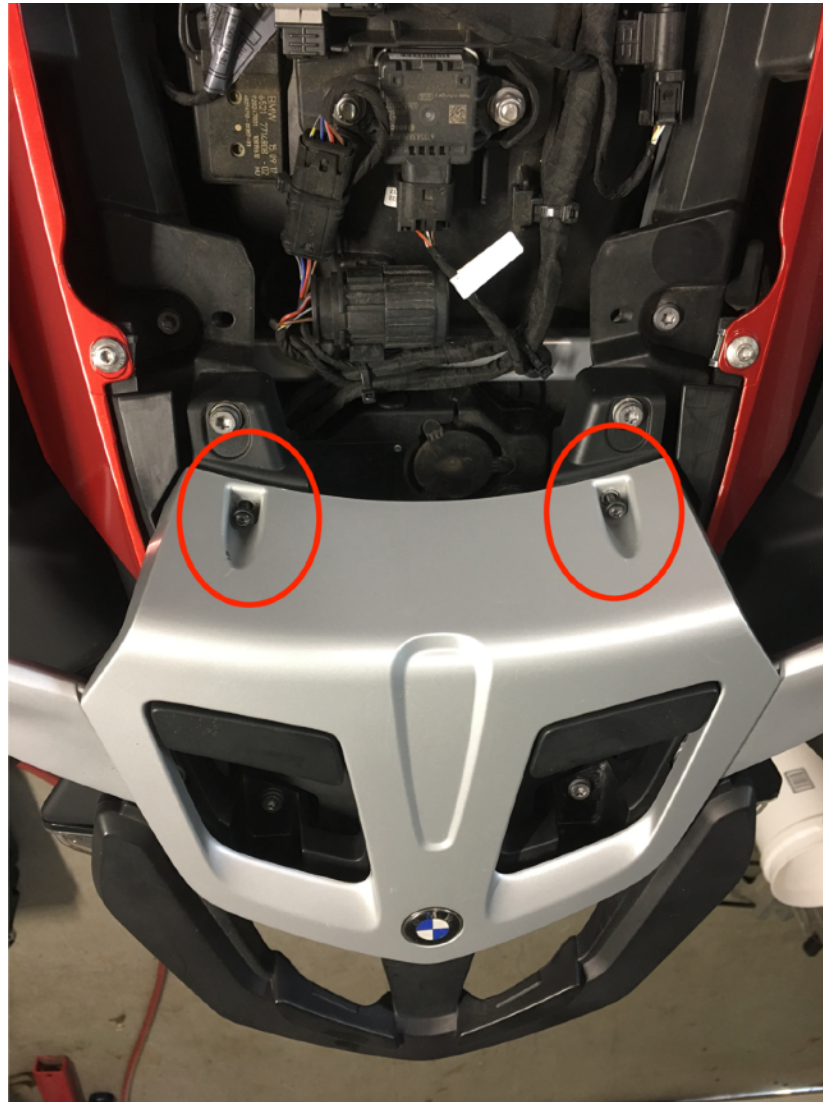
go to backroadequipment.com for installation instructions

**Do not exceed the OEMs
recommendation for weight on the
rear rack of the motorcycle!!**

In order to properly locate the top box
it will be necessary to install, remove
and re-install the BRE rack, please keep
this in mind and read through the
instructions completely before starting
the work.



Step 1 Remove the pillion seat to expose the tail cover.



Step 2 Remove the 2 screws retaining the plastic tail cover and remove the cover. *This cover and screws will not be used with the BRE Slider Rack, save these items if you ever plan on removing the Slider rack.*



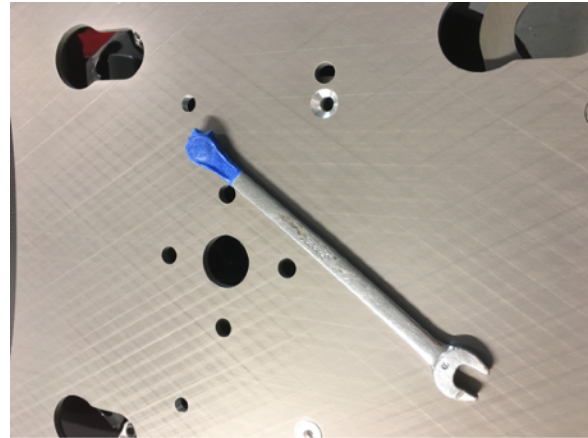
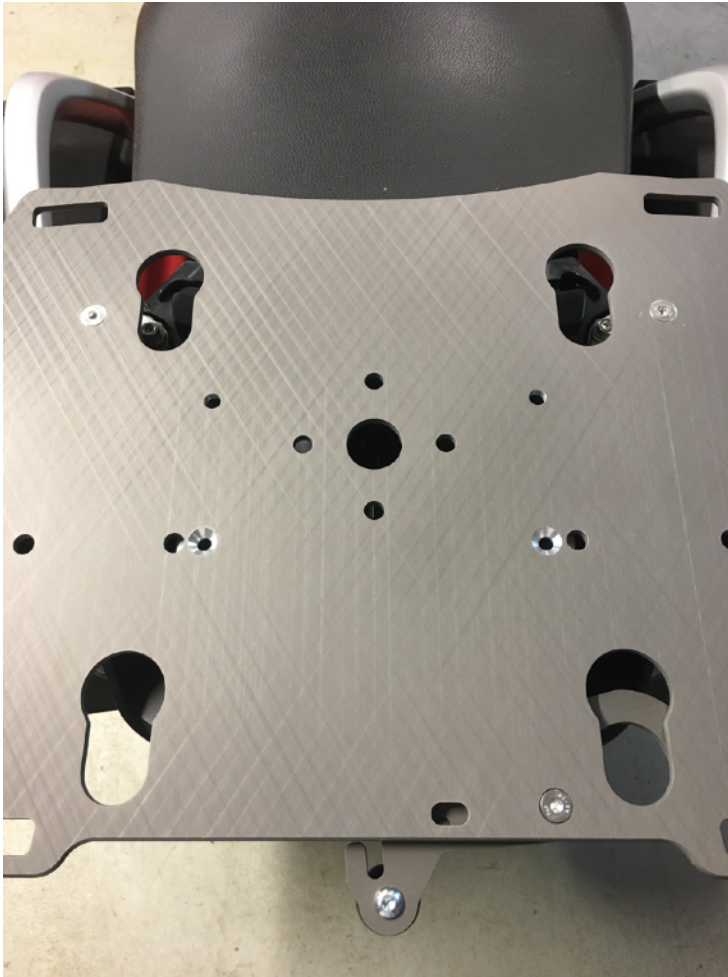
Step 3 Remove the 4 pillion handle screws and the 2 rear screws circled in red. *These screws will not be used with the Slider rack, save these if you ever plan on removing the Slider rack.*



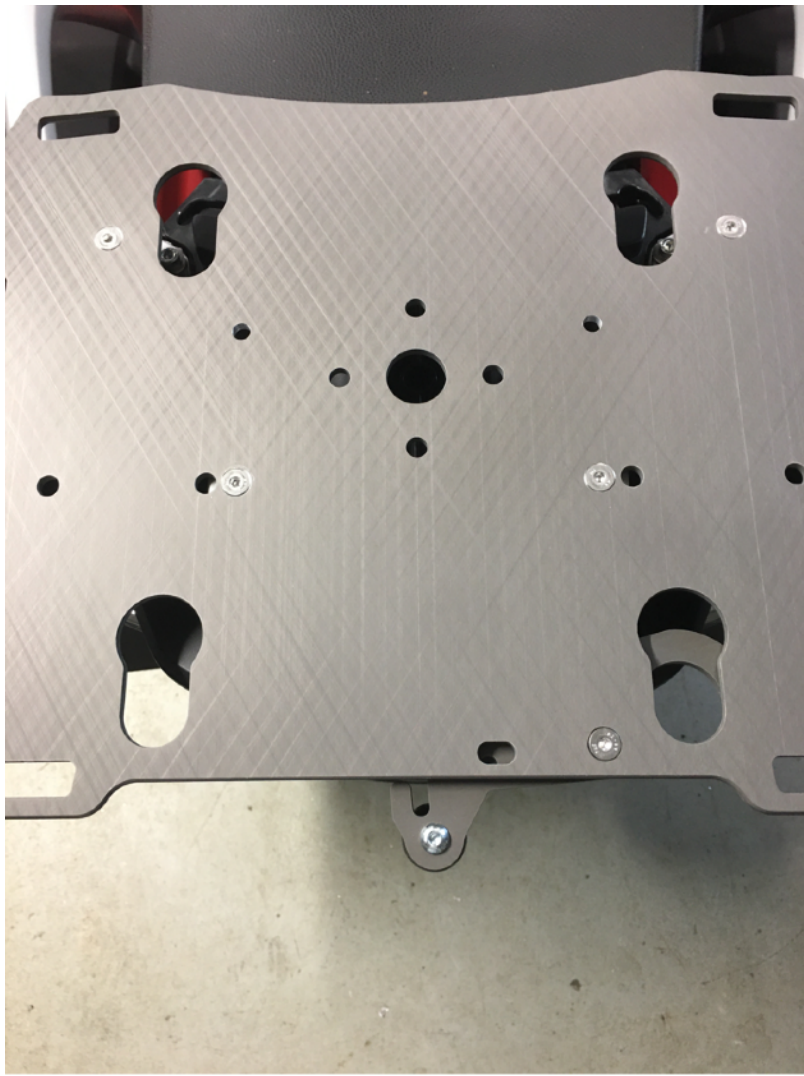
Step 4 Install the LH and RH front “Z” brackets as shown using 4 M6 x 25mm SHCS and 4 M6 flat washers. **Note:** The top of the brackets angle downwards towards the front of the bike. Do not tighten the screws completely. **Note:** flat washers go on top of “Z” bracket.



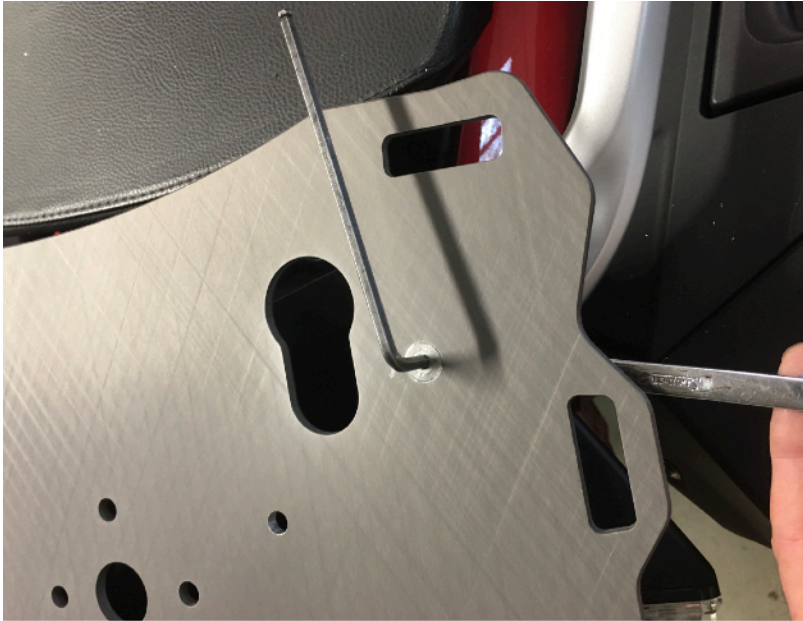
Step 5 Install the RH and LH rear “Z” brackets as shown using 2 M6 x 40mm SHCS and 2 M6 flat washers. The base of the “Z” bracket is clearance to fit the recess on the bike so there is a RH and LH. Do not tighten the screws completely. **Note:** flat washers go on top of “Z” bracket.



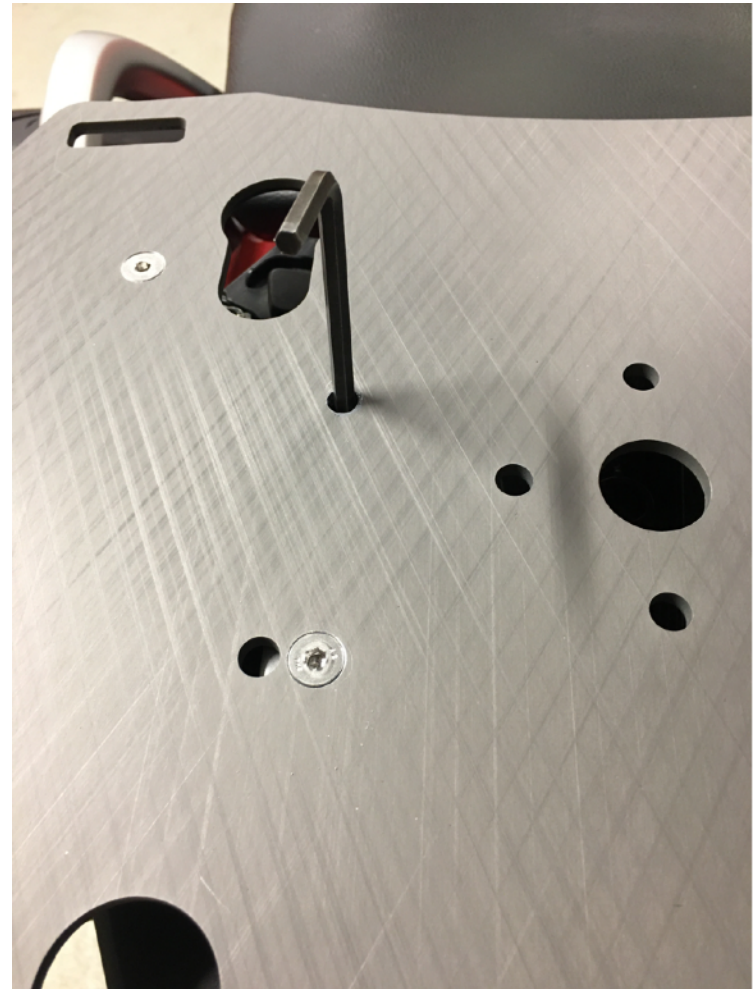
Step 6 Place the plate on top of the “Z” brackets and line up the mounting holes. First insert the 2 M6 x 18 flat head screws in the front mounting holes. Thread on the M6 nylon lock nuts. **Note:** adding masking tape to the box end of the combination wrench will aid in attaching the lock nut.



Step 7 Insert 2 M6 x 18 flat head screws in the rear mounting holes. Thread on M6 nylon lock nuts, do not full tighten at this time. **Note:** adding masking tape to the box end of the combination wrench will aid in attaching the lock nuts.



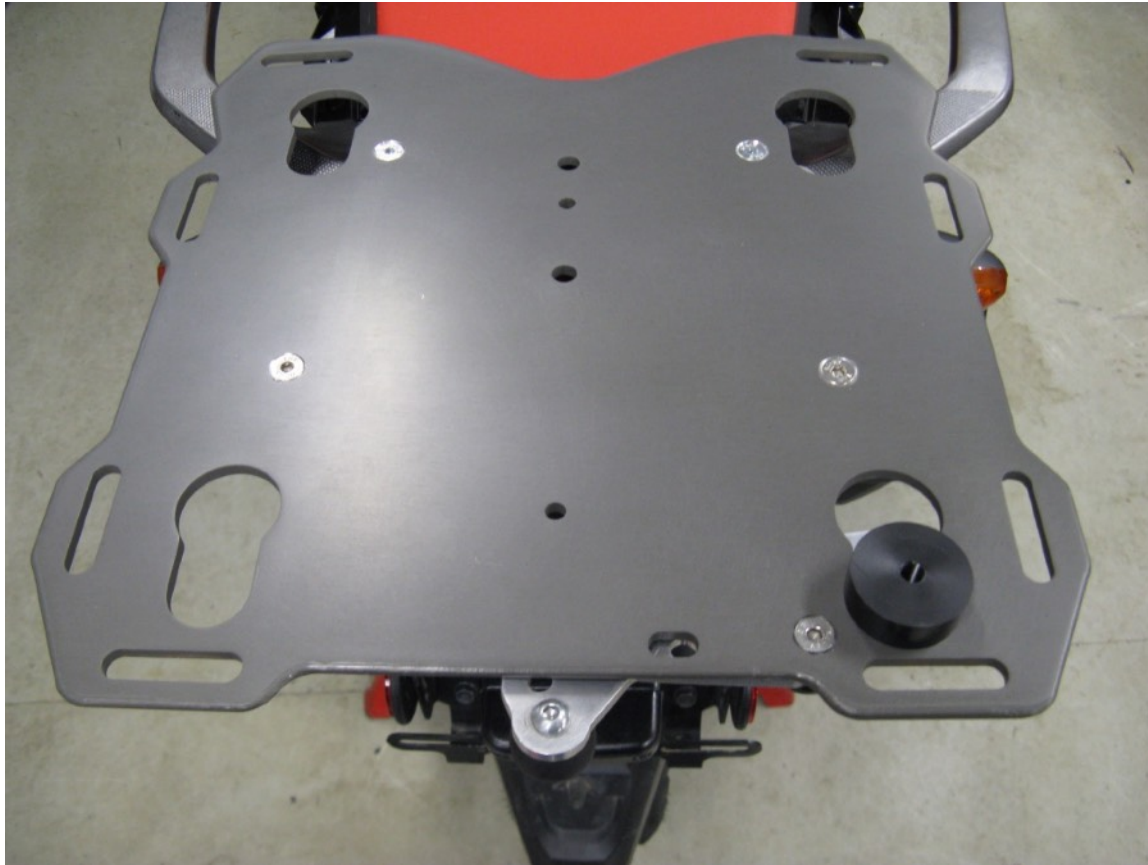
Step 8 The mounting brackets are still slightly loose at this time, check the position of the the plate on the bike, adjust the position if necessary (the amount of movement is very small, you are just trying to perfectly square the plate to the bike now.) Using a 4mm hex key wrench and 10mm combination wrench tighten the 4 lock nuts.



Step 9 Tighten rear Z brackets. The mounting brackets are still slightly loose at this time, check the position of the the plate on the bike, adjust the position if necessary (the amount of movement is very small, you are just trying to perfectly square the plate to the bike now.) Using a ball 5mm hex key wrench tighten the 4 front M6 X 25 SHCS, then tighten the 2 rear M6 X 40 SHCS. See Photos.**NOTE** Final torque of the Z bracket screws will take place in step 13.



The next steps outline installing mounting pucks to the case. The motorcycle in the photos may not be your exact model. Puck mounting is the same for all motorcycles.



Step 10 Install one of the black plastic pucks into the key hole with the cam lever. Lock the puck into place with the cam lever. This will be referred to as the “Master Puck”

Note: Remove the large washer and screw from the puck before putting into the plate. The screws and washers are installed into the pucks for shipment as part of our QA process.



Step 11 Insert the 3 remaining pucks into the keyholes in the plate.



Step 12 Position the box on top of the pucks. Determine the for/aft location (side to side will be determined later). Position the box as far forward as possible without interfering with passenger comfort. Also consider if you will be placing any gear on the seat or if you want to be able to remove the seat with the box in place. Use a marker to mark the master puck location on the box.



Step 13 The “Z” brackets are now located and tight (step 9). Remove the 4 nylock nuts (be carefull, use the taped wrench). Remove the plate from the brackets. Torque the six M6 SHCSs to 10 ft. lbs.



Step 14 Place the case on a table or other work surface. Place the Slider plate on top of the case.



Step 15 Locate the puck marker on the box and align the master puck up with the mark as it was on the bike.

Adjust the box side to side and make any final adjustments to the location.



Step 16 Make certain the plate is positioned on the box where you would like it. A helping hand would be useful during the next few steps but it can be done solo.

With a ¼” drill bit and electric drill use the master puck as a drill guide and drill a pilot hole through the box.



Step 17 Remove the rack from the box. Use the $\frac{21}{64}$ " drill bit and electric drill to enlarge the $\frac{1}{4}$ " pilot hole.



Step 18 Use the 5/16” button head cap screw and 1 ½” aluminum washer to attach the master puck to the box.



Step 19 Place the rack with the other 3 pucks onto the master puck and latch it into position. Square up the plate and box to each other (last chance).



Step 20 With the ¼” drill bit, use the puck diagonally across from the master puck as a drill guide and drill a second pilot hole in the box.

Make sure the pucks are seated in the keyholes before drilling!!



Step 21 Remove the rack from the box. Use the $\frac{21}{64}$ " drill bit and electric drill to enlarge the $\frac{1}{4}$ " pilot hole.

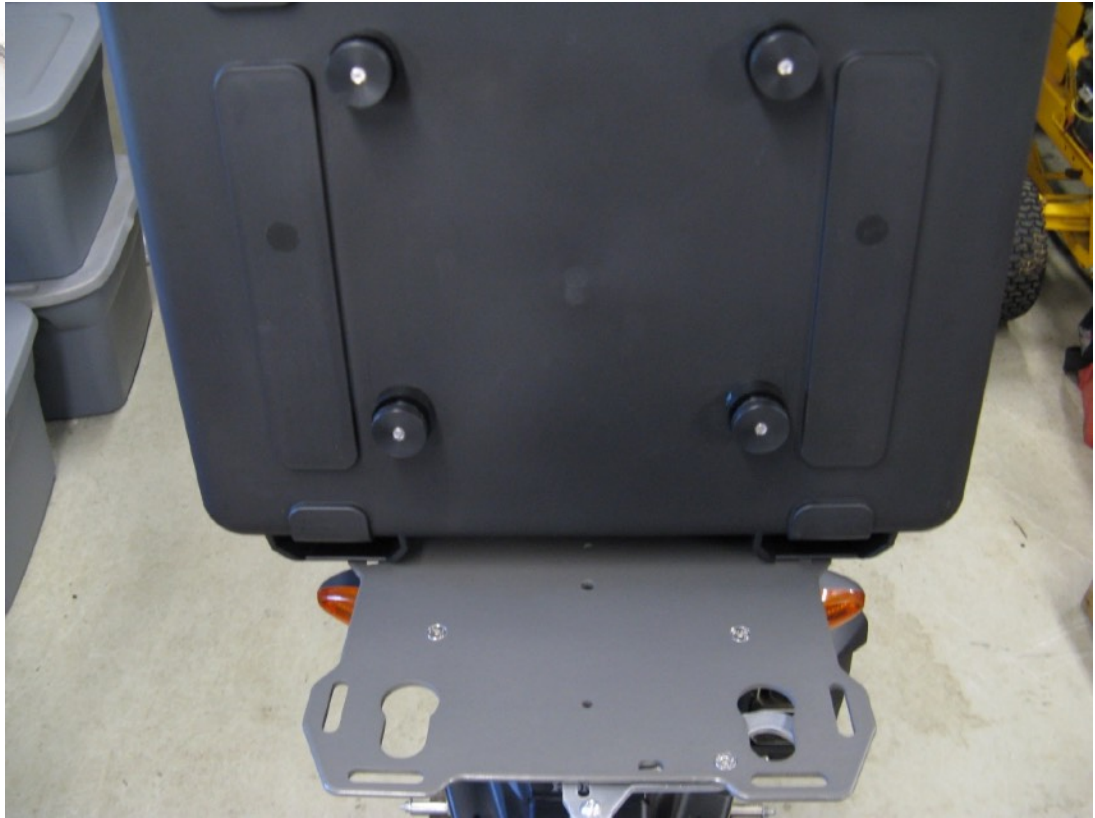


Step 22 Bolt the second puck to the box. Place the rack on the box and latch it into position. With the $\frac{1}{4}$ " drill bit use the 2 remaining pucks as drill guides and drill the last 2 pilot holes.

Make sure the pucks are seated in the keyholes before drilling!!

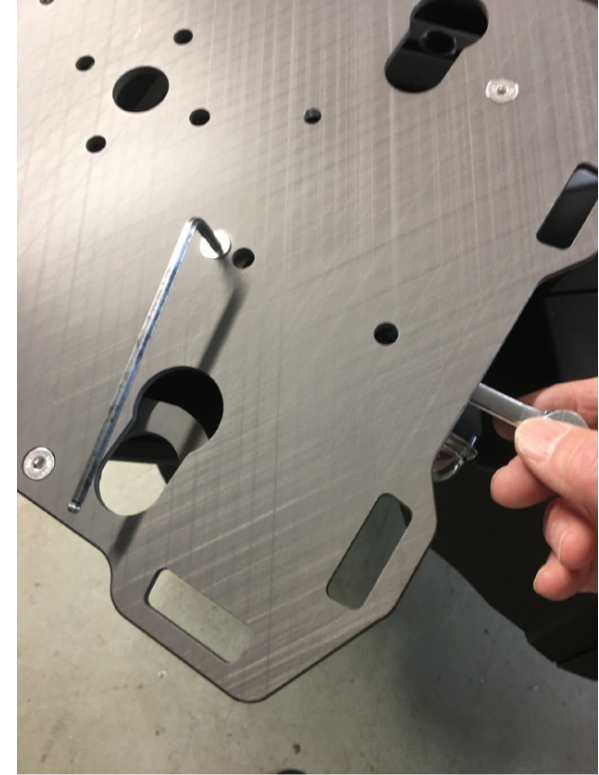
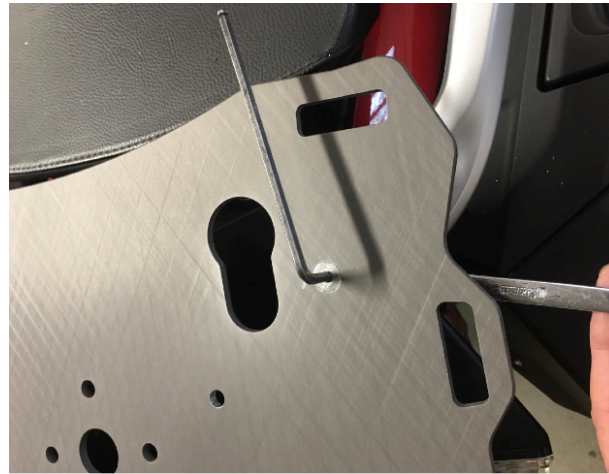
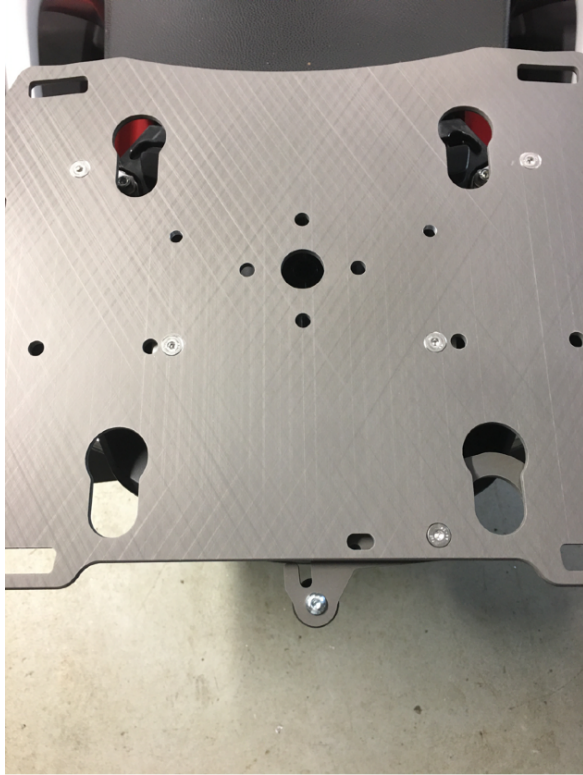


Step 23 Remove the rack and pucks from the box. Use the $21/64$ " drill bit and electric drill to enlarge the last $2\ 1/4$ " pilot holes.



Step 24 Install all pucks onto the box using the 1 ½” aluminum washers and 5/16” button head cap screws.

Lightly snug the puck screws at this time, later they will be fully tightened.



Step 25 Re-install the plate on the “Z” brackets. Tighten the 4 lock nuts.



Step 24 Install the box onto rack and latch it into place with the cam lever.



Step 25 Torque the puck screws to 108 in. lbs.



That completes the installation process. Test ride the motorcycle and then check all the fasteners for tightness. Also check the fasteners again after 1000 miles and at every oil change after that.

For security a 3/16” pad lock can be used to lock the cam lever in the closed position.

Thank You

