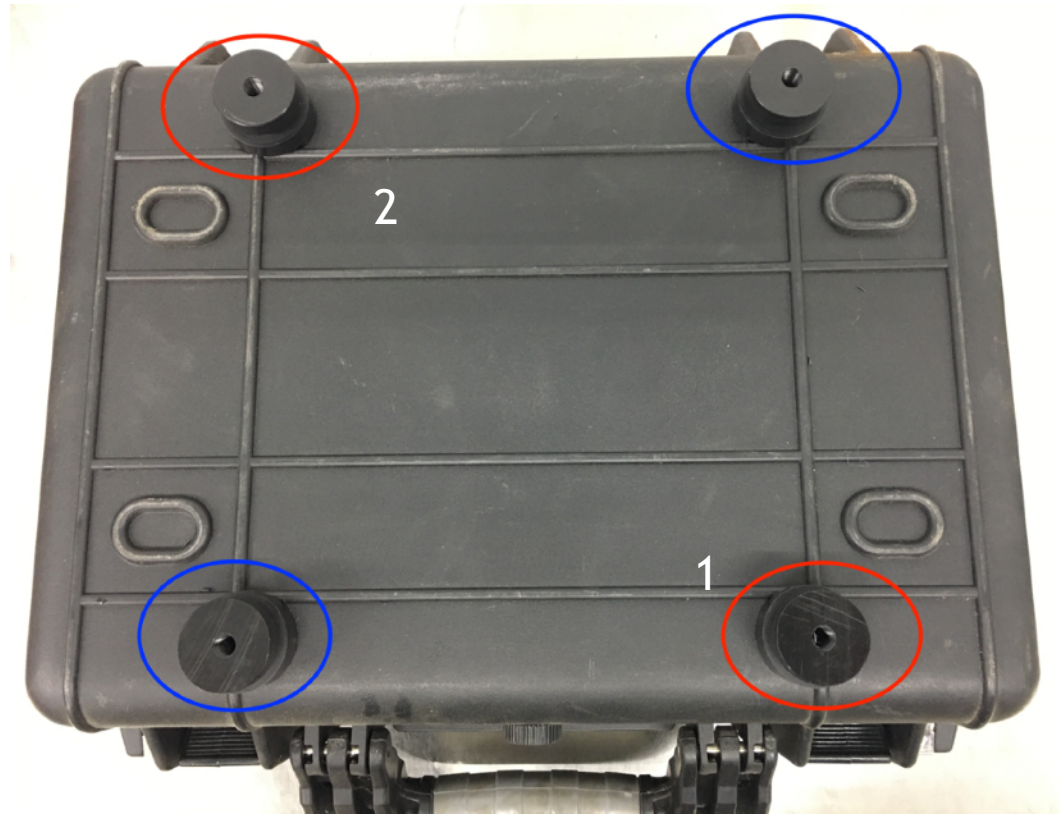




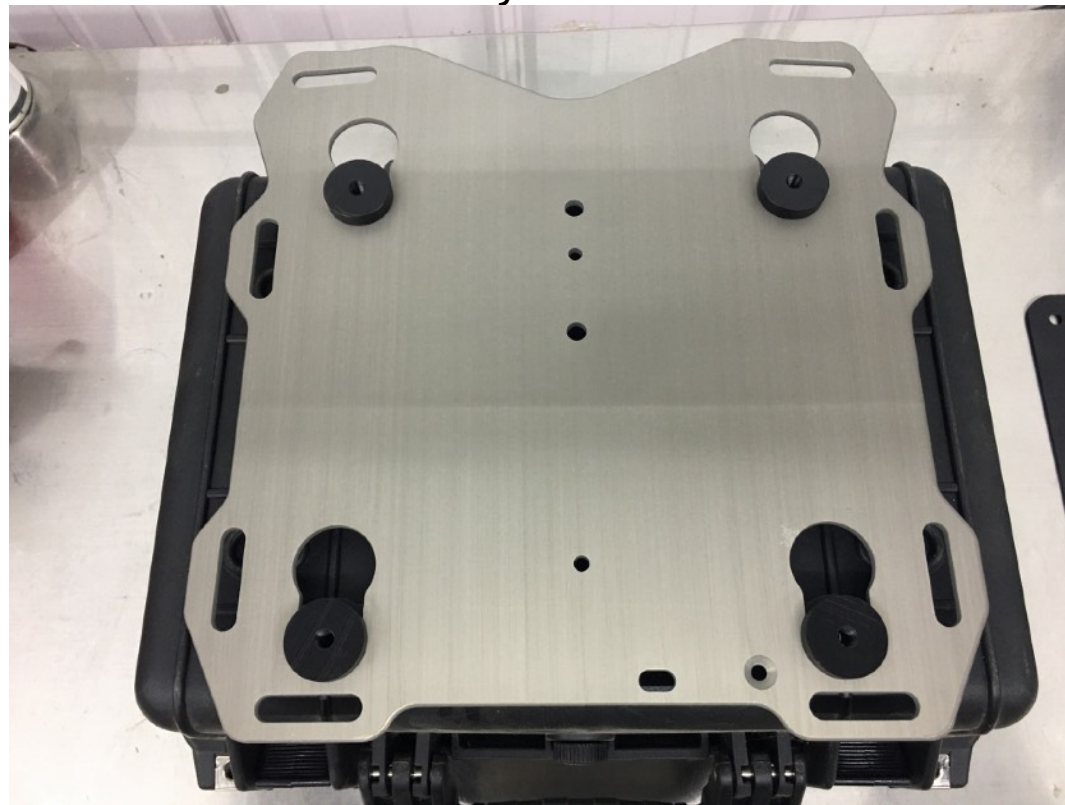
Puck Kit for Harbor Freight 3800 Apache Case



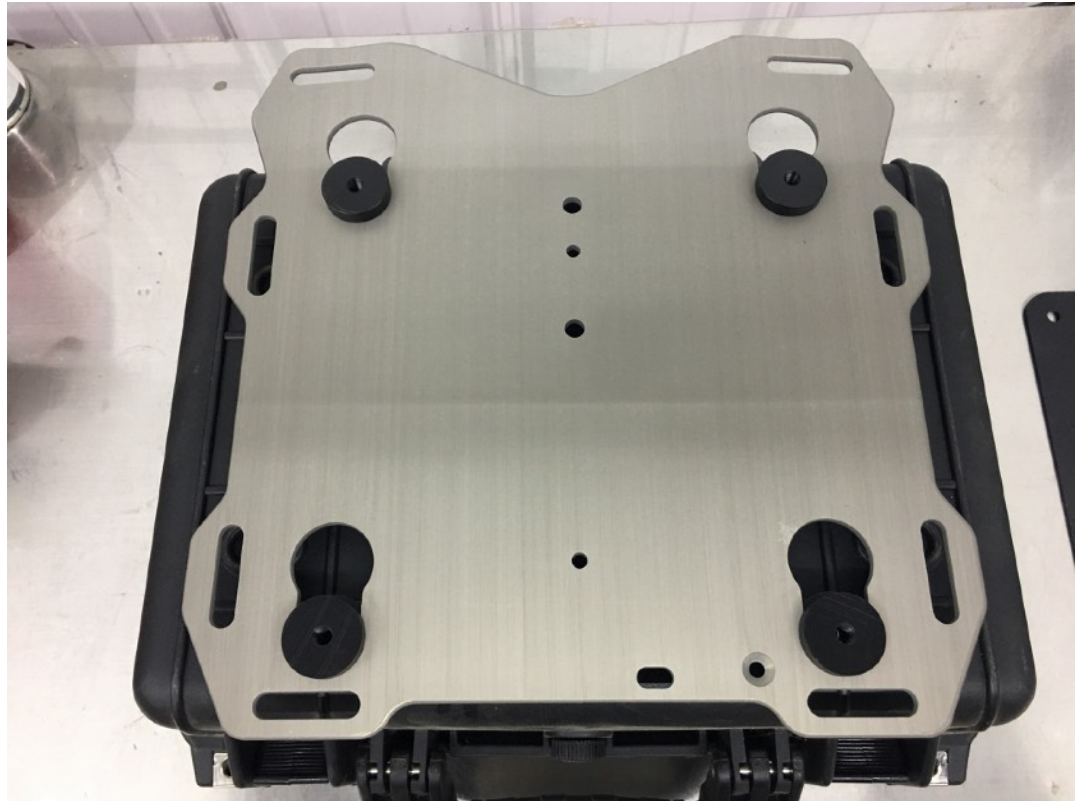
Note: The pucks are not identical. There are 2 RH (red) pucks and 2 LH (blue) pucks in this kit. The RH corner is always the lower RH corner (1) as shown in the photo. If the case was rotated 180 degrees then corner 2 would be the lower RH corner. The machined grooves in the puck places the threaded hole on the inside of the vertical rib and to the outside of the horizontal ribs. This is the only location the pucks will fit on the 3800 Apache.



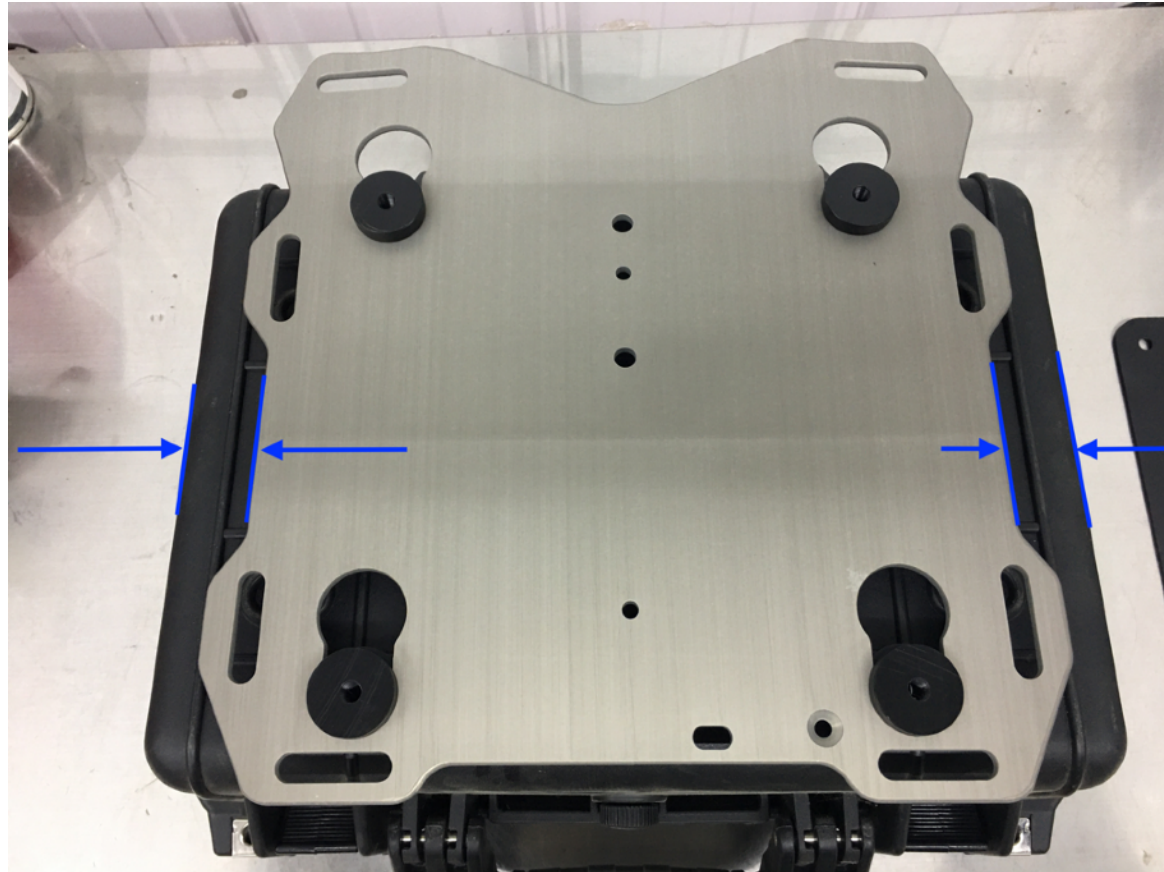
Step 1 Read the Slider rack Installation Instructions and understand how to use the Slider plate and pucks as a template and drill guide. **Note:** When using the 3800 Apache case, it should be drilled before installing the Slider plate onto the motorcycle.



Step 2 locate the RH and LH pucks and insert them into the Slider plate in the correct location, see Note on page 1.



Step 3 Line up the machined grooves in the pucks with the corresponding ribs on the case. Note: verify the pucks are fully seated in the keyhole and verify the grooves and ribs are lined up allowing the pucks to sit flat on the case.



Step 4 Using a rule or combination square verify the side to side location is equal. Once the checks in step 3 & 4 are complete you are ready to drill. **FOLLOW THE STEPS FOR DRILLING IN THE SLIDER RACK INSTALLATION INSTRUCTIONS!**