



- **Back Road Equipment  
Slider Rear Rack  
Installation Instructions  
Suzuki DR650 OEM Rack**

Tools Required:

10 mm combination wrench  
4 mm hex wrench  
5 mm hex wrench  
1/4" drill bit  
21/64" drill bit  
electric hand drill  
marking pen  
Torque wrench  
4 mm hex drive socket  
5 mm hex drive socket

- Kit Contents:
- 1 Slider Plate with cam lever
- 4 - pucks
- 4 - 8mm Button Head Screws
- 4 - 38mm diameter aluminum washer
- 4 - M6 x 60 Flat head screws
- 2 - M6 x 50 Flat head screws
- 2 - 19 mm clamp assemblies
- 1 - 19 mm low profile clamp assembly
- 4 - aluminum 19mm x 10mm spacers

go to [backroadequipment.com](http://backroadequipment.com) for installation instructions

**Do not exceed the OEMs  
recommendation for weight on the  
rear rack of the motorcycle!!**

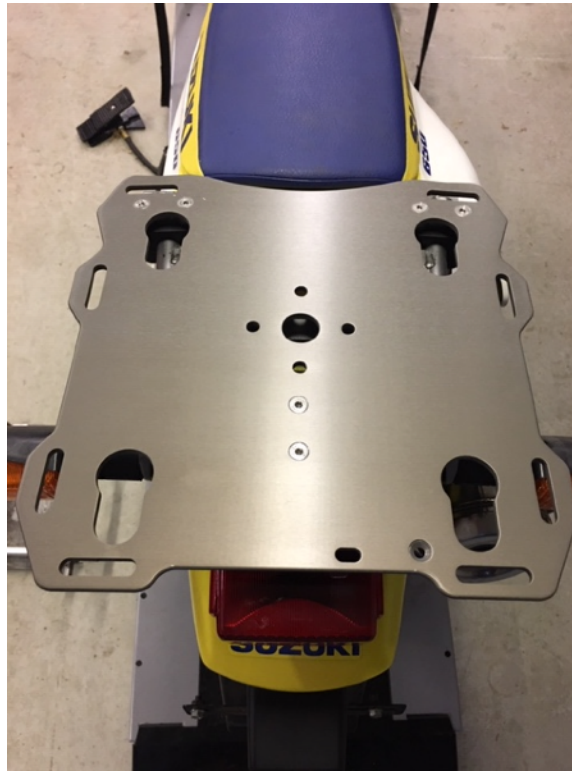
In order to properly locate the top box it will be necessary to install, remove and re-install the BRE rack, please keep this in mind and read through the instructions completely before starting the work.



**Step 1** Disassemble the three 19mm clamps



**Step 2** Place the low profile clamp on the rear tube of the OEM rack and the other 2 clamps on the side tubes as shown in the photo. Place 6 aluminum spacers on top of the clamps.



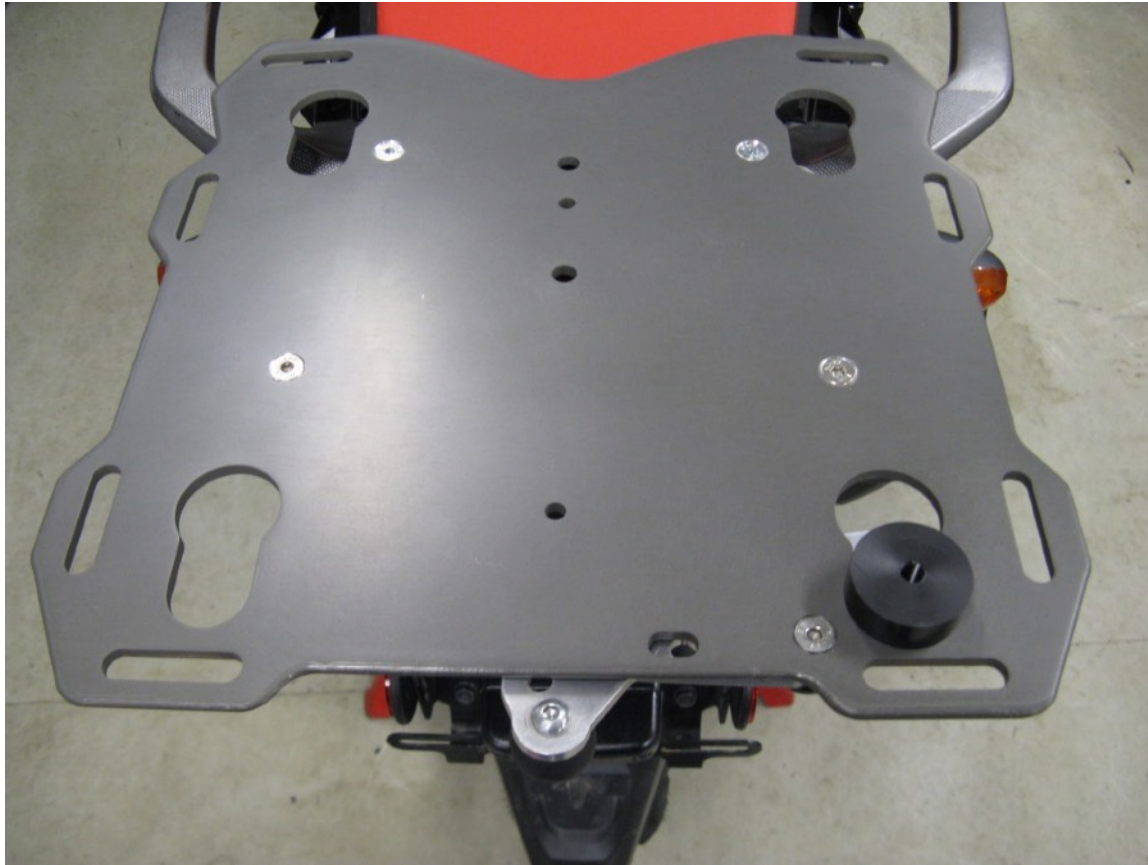
**Step 3** Place the BRE plate on top of the spacers and insert the four 60mm screws in the front clamps and the 50 mm screws in the rear clamp.

**Step 4** Install the lower clamp halves, clamp plates and lock nuts on the front two clamps.

**Step 5** Place the lower clamp half and the low profile plate on the rear clamp. Thread the 50 mm screws through the clamp plate.

**Step 6** Use a 4 mm hex wrench and a 10 mm combination wrench to tighten the four M6 front nylock nuts.

**Step 7** Use a 4 mm hex wrench to tighten the rear M6 50mm flat head screws.



**Step 8** Install one of the black plastic pucks into the key hole with the cam lever. Lock the puck into place with the cam lever. This will be referred to as the “Master Puck”

Note: Remove the large washer and screw from the puck before putting into the plate. The screws and washers are installed into the pucks for shipment as part of our QA process.



**Step 9** Insert the 3 remaining pucks into the keyholes in the plate.



**Step 10** Position the box on top of the pucks. Determine the for/aft location (side to side will be determined later). Position the box as far forward as possible without interfering with passenger comfort. Also consider if you will be placing any gear on the seat or if you want to be able to remove the seat with the box in place. Use a marker to mark the master puck location on the box.





**Step 11** Place the box on a table or other work surface. Remove the 4 flat head screws and nuts holding the rack onto the mounting brackets.

Place the rack on top of the bottom of the box.



**Step 12** Locate the puck marker on the box and align the master puck up with the mark as it was on the bike.

Adjust the box side to side and make any final adjustments to the location.



**Step 13** Make certain the plate is positioned on the box where you would like it. A helping hand would be useful during the next few steps but it can be done solo.

With a  $\frac{1}{4}$ " drill bit and electric drill use the master puck as a drill guide and drill a pilot hole through the box.



**Step 14** Remove the rack from the box. Use the  $\frac{21}{64}$ " drill bit and electric drill to enlarge the  $\frac{1}{4}$ " pilot hole.



**Step 15** Use the 5/16” button head cap screw and 1 ½” aluminum washer to attach the master puck to the box.



**Step 16** Place the rack with the other 3 pucks onto the master puck and latch it into position. Square up the plate and box to each other (last chance).



**Step 17** With the ¼” drill bit, use the puck diagonally across from the master puck as a drill guide and drill a second pilot hole in the box.

**Make sure the pucks are seated in the keyholes before drilling!!**



**Step 18** Remove the rack from the box. Use the  $21/64$ " drill bit and electric drill to enlarge the  $1/4$ " pilot hole.





**Step 19** Bolt the second puck to the box. Place the rack on the box and latch it into position. With the 1/4" drill bit use the 2 remaining pucks as drill guides and drill the last 2 pilot holes.

**Make sure the pucks are seated in the keyholes before drilling!!**

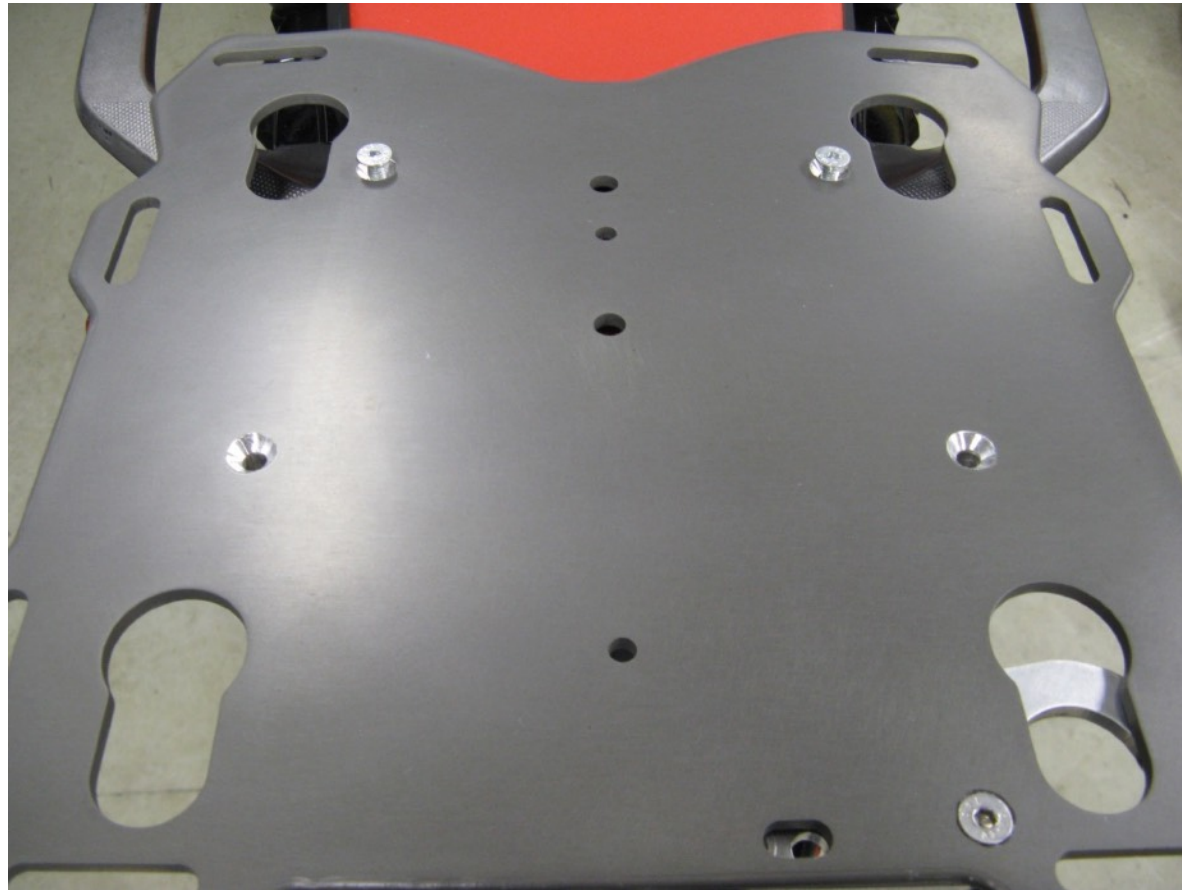


**Step 19** Remove the rack and pucks from the box. Use the  $21/64$ " drill bit and electric drill to enlarge the last  $2\ 1/4$ " pilot holes.



**Step 20** Install all pucks onto the box using the 1 ½” aluminum washers and 5/16” button head cap screws.

Lightly snug the puck screws at this time, later they will be fully tightened.



**Step 21** Re-install the plate on the spacers.  
Re-install the M6 flat head screws and tighten  
the clamps.



**Step 24** Install the box onto rack and latch it into place with the cam lever.



**Step 25 Torque the puck screws to 108 in. lbs.**



That completes the installation process. Test ride the motorcycle and then check all the fasteners for tightness. Also check the fasteners again after 1000 miles and at every oil change after that.

For security a 3/16” pad lock can be used to lock the cam lever in the closed position.

# Thank You

