



• Back Road Equipment Slider Rear Rack Installation Instructions KTM 1050/1190/1290

Tools Required:

10 mm combination wrench
4 mm hex wrench
5 mm hex wrench
1/4" drill bit
21/64" drill bit
electric hand drill
marking pen
Torque wrench
4 mm hex drive socket
5 mm hex drive socket
T45 wrench

- Kit Contents:
- 1 Slider Plate with cam lever
- 4 - pucks
- 4 - 8mm Button Head Screws
- 4 - 1.5" diameter aluminum washer
- 4 - M8 x 80 SS flat head screws
- 2 - M6 x 18 SS flat head screws
- 2 - M6 nylock nuts
- 2 - 22 mm OD x 40 mm long round aluminum spacers (long)
- 2 - 22mm x 30 mm round aluminum spacer (short)
- 1 - lower plate

go to backroadequipment.com for installation instructions

**Do not exceed the OEMs
recommendation for weight on the
rear rack of the motorcycle!!**

In order to properly locate the top box it will be necessary to install, remove and re-install the BRE rack, please keep this in mind and read through the instructions completely before starting the work.



Step 1 Remove the OEM Top Plate and grab handles.



Step 2 Re-install the grab handles using only the front OEM screws to retain the handles. Tighten the screws only 2 - 3 revolutions.



Step 3 Place the short spacers over the rear mounting holes of the handles. The spacer must be positioned with the angled cut on top with the lowest point of the spacer facing the front of the motorcycle.



Step 4 Install the plate with the 2 rear BRE 80mm screws. Insert the screws through the spacers and thread into the subframe. Tighten the screws only 2- 3 revolutions at this time.



Step 5 Remove the front OEM screws.



Step 6 Place the long angled spacers over the front holes of the grab handles. The spacer angled end must face upward and with the lowest point of the spacer facing toward the front of the motorcycle. Insert the 2 remaining 80mm BRE screws.



Step 7 Snug the four 80mm flat head screws with a hex wrench. Verify that the angled spacers are positioned correctly with the angled low point facing the front of the motorcycle.



Step 8 Tighten the sub plate's two 6 mm screws and lock nuts using a hex key wrench and a 10mm combination wrench.



Step 9 Install one of the black plastic pucks into the key hole with the cam lever. Lock the puck into place with the cam lever. This will be referred to as the “Master Puck”

Note: Remove the large washer and screw from the puck before putting into the plate. The screws and washers are installed into the pucks for shipment as part of our QA process.



Step 10 Insert the 3 remaining pucks into the keyholes in the plate.



Step 11 Position the box on top of the pucks. Determine the for/ aft location (side to side will be determined later). Position the box as far forward as possible without interfering with passenger comfort. Also consider if you will be placing any gear on the seat or if you want to be able to remove the seat with the box in place. Use a marker to mark the master puck location on the box.



Step 12 Place the box on a table or other work surface. Remove the 4 flat head screws and nuts holding the rack onto the mounting brackets.

Place the rack on top of the bottom of the box.



Step 13 Locate the puck marker on the box and align the master puck up with the mark as it was on the bike. Adjust the box side to side and make any final adjustments to the location.



Step 14 Make certain the plate is positioned on the box where you would like it. A helping hand would be useful during the next few steps but it can be done solo.

With a 1/4" drill bit and electric drill use the master puck as a drill guide and drill a pilot hole through the box.



Step 15 Remove the rack from the box. Use the 21/64” drill bit and electric drill to enlarge the 1/4” pilot hole



Step 16 Use the 5/16” button head cap screw and 1 ½” aluminum washer to attach the master puck to the box.



Step 17 Place the rack with the other 3 pucks onto the master puck and latch it into position. Square up the plate and box to each other (last chance).



Step 18 With the 1/4" drill bit, use the puck diagonally across from the master puck as a drill guide and drill a second pilot hole in the box.

Make sure the pucks are seated in the keyholes before drilling!!



Step 19 Remove the rack from the box. Use the $21/64$ " drill bit and electric drill to enlarge the $1/4$ " pilot hole

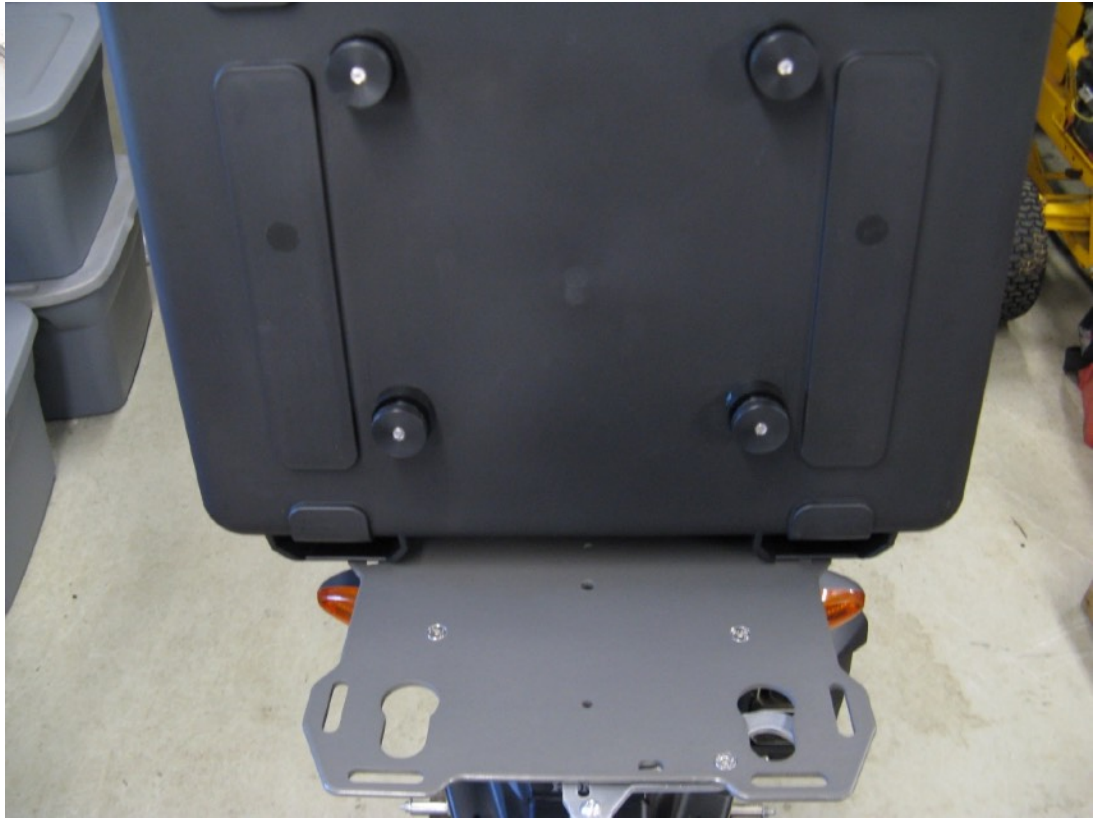


Step 20 Bolt the second puck to the box. Place the rack on the box and latch it into position. With the 1/4" drill bit use the 2 remaining pucks as drill guides and drill the last 2 pilot holes.

Make sure the pucks are seated in the keyholes before drilling!!

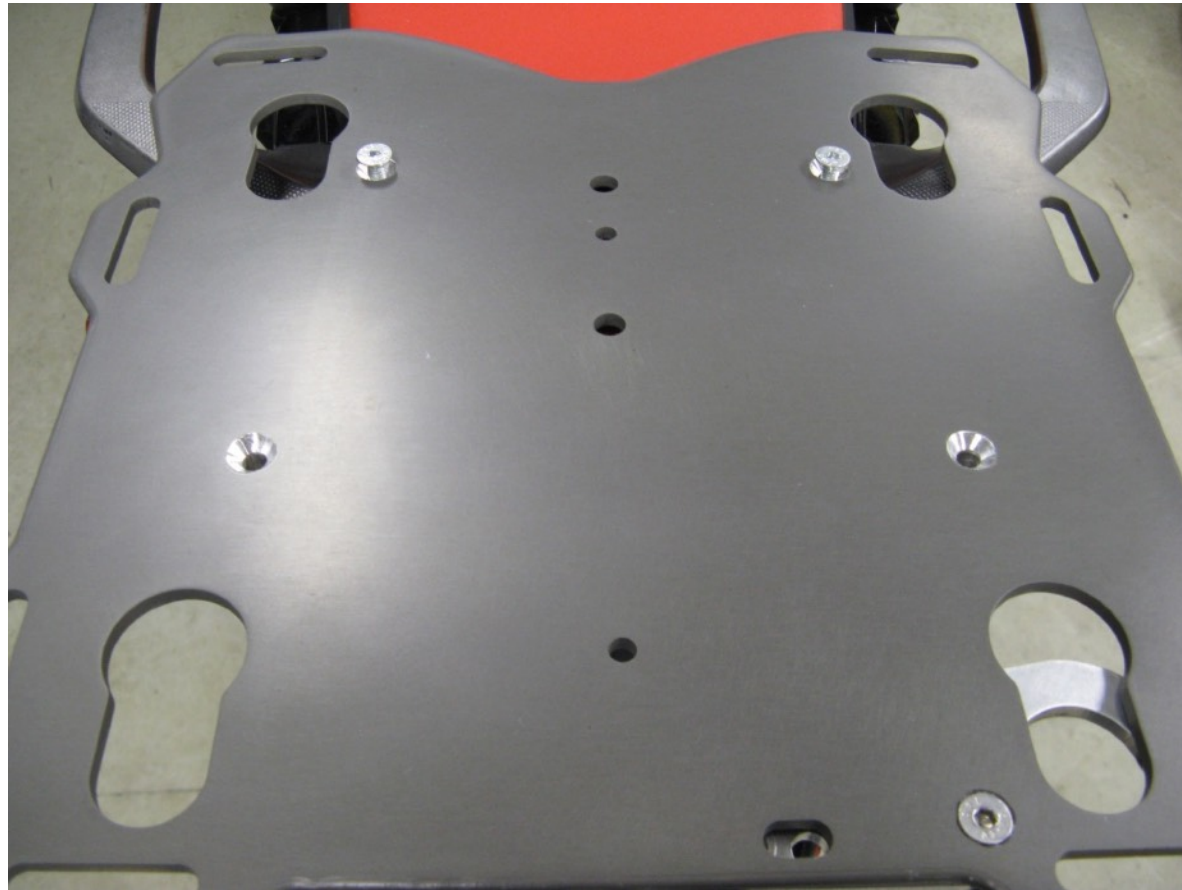


Step 21 Remove the rack and pucks from the box. Use the 21/64" drill bit and electric drill to enlarge the last 2 1/4" pilot holes.



Step 22 Install all pucks onto the box using the 1 ½” aluminum washers and 5/16” button head cap screws.

Lightly snug the puck screws at this time, later they will be fully tightened.



Step 23 Re-install the plate on the spacers.
Re-install the M8 flat head screws and
torque to 17 ftlbs.



Step 24 Install the box onto rack and latch it into place with the cam lever.



Step 25 Torque the puck screws to 108 in. lbs.



That completes the installation process. Test ride the motorcycle and then check all the fasteners for tightness. Also check the fasteners again after 1000 miles and at every oil change after that.

For security a 3/16” pad lock can be used to lock the cam lever in the closed position.

Thank You

