



- Back Road Equipment  
Slider Rear Rack Installation  
Instructions Triumph Tiger  
800/800XC

Tools Required:

8mm socket

5 mm hex wrench

¼" drive In. lbs. torque wrench

¼" drill bit

21/64" drill bit

electric hand drill

marking pen

242 Blue Loctite thread locker or  
similar

- Kit Contents:

- 1 Slider Plate with cam lever

- 4 - pucks

- 4 – M8 x 35mm Button Head Screws

- 4 - 1.5" diameter aluminum washer

- 4 - M6 -1 x 55 flat head screws

- 2 - 16 x 35mm round aluminum spacers (short)

- 2 – 16 x 38 mm round aluminum spacer (long)

- See [backroadequipment.com](http://backroadequipment.com) for installation instructions

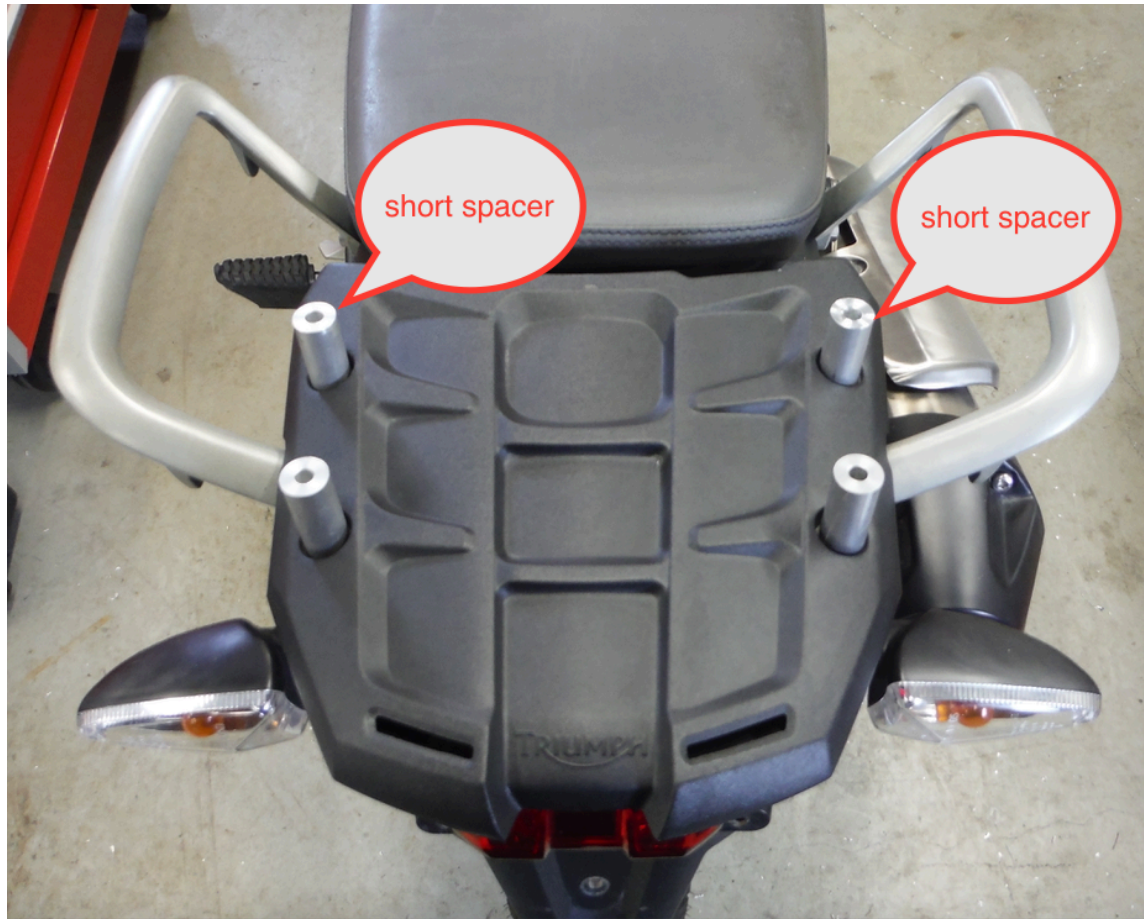
Do not exceed the OEMs  
recommendation for weight on the  
rear rack of the motorcycle!!

In order to properly locate the top box it  
will be necessary to install, remove and re-  
install the BRE rack, please keep this in  
mind and read through the instructions  
completely before starting the work.

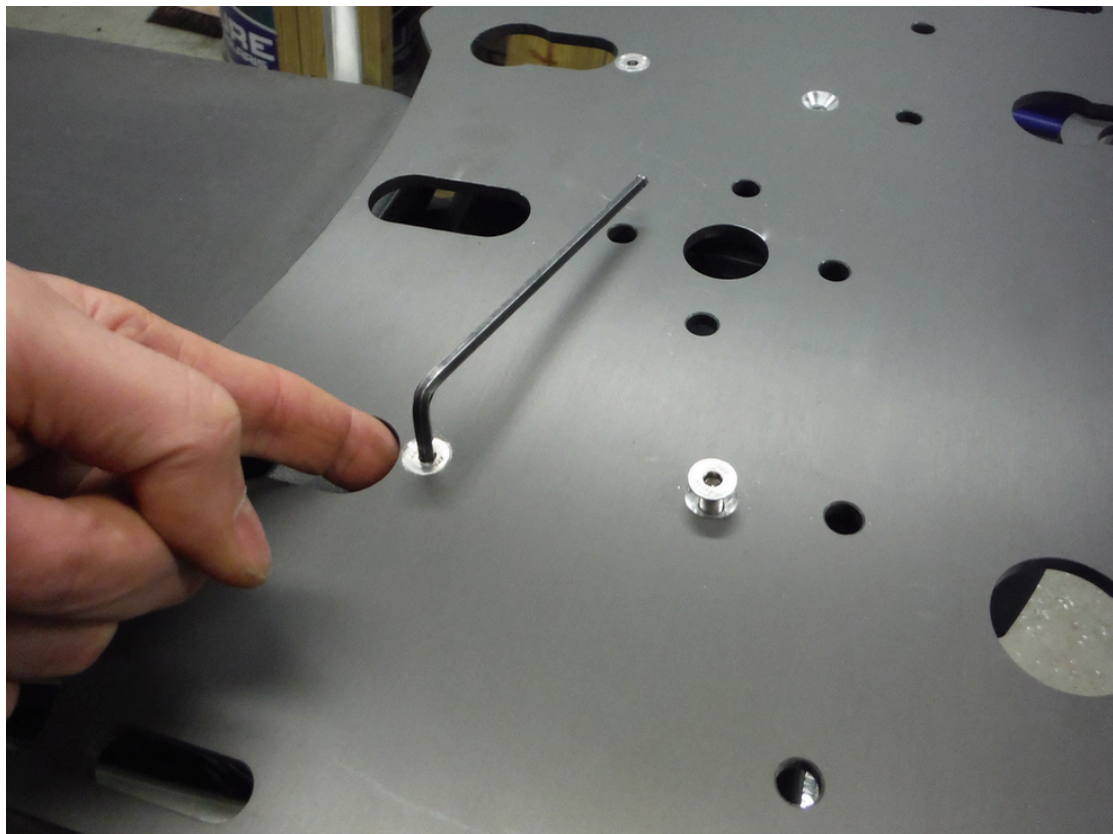


### **Step 1 Remove the 4 tail cover screws.**

These screws will not be used to install the rack. Save these screw in case you ever want to remove the rack.



**Step 2 Install the 4 aluminum spacers where the screws were. The short spacers go closest to the seat.**



**Thread all four M6 X 55 screws into the plate, through the spacers and into the mounting points. Use your index finger to bias the front spacers towards the rear of the bike as you snug up the front screws. Snug all 4 screws. You will be using the plate as a drill template later so do not apply final torque on these screws now.**



**Step 7 Install the master puck. All pucks are identical.**

Install the master puck in the lever key hole (circled).  
Install the other 3 pucks in the keyholes and seat them in  
the rear of the keyhole.



**Step 8 Place the top box on top of the pucks and position it where you would like it located.**

The box should be located as far forward as possible without interfering with seat removal and passenger space.



**Step 9 Mark the location of the master puck onto the top box with a marker.**

Fore and aft position of the top box is the priority here, the side to side placement will be adjusted later.





**Step 10 Place the box on a table or other work surface. Remove the 4 flat head screws and nuts holding the rack onto the stainless steel brackets.**

Place the rack on top of the box.



**Step 11 Locate the puck marker on the box and align the master puck up with the mark as it was on the bike.**

Adjust the box side to side and make any final adjustments to the location.



**Step 12 Make certain the plate is positioned on the box where you would like it. A helping hand would be useful during the next few steps but it can be done solo.**

With a  $\frac{1}{4}$ " drill bit and electric drill use the master puck as a drill guide and drill a pilot hole through the box.



**Step 13 Remove the rack from the box. Use the  $\frac{21}{64}$ " drill bit and electric drill to enlarge the  $\frac{1}{4}$ " pilot hole**



**Step 14 Use the long 5/16" button head cap screw and 1 1/2" aluminum washer to attach the master puck to the box.**



**Step 15 Place the rack with the other 3 pucks onto the master puck and latch it into position. Square up the plate and box to each other (last chance).**



**Step 16 With the  $\frac{1}{4}$ " drill bit, use the puck diagonally across from the master puck as a drill guide and drill a second pilot hole in the box.**

**Make sure the pucks are seated in the keyholes before drilling!!**



**Step 17 Remove the rack and pucks from the box. Use the 21/64" drill bit and electric drill to enlarge the second 1/4" pilot hole.**





**Step 18 Bolt the second puck to the box. Place the rack on the box and latch it into position. With the ¼" drill bit use the 2 remaining pucks as drill guides and drill the last 2 pilot holes.**

**Make sure the pucks are seated in the keyholes before drilling!!**

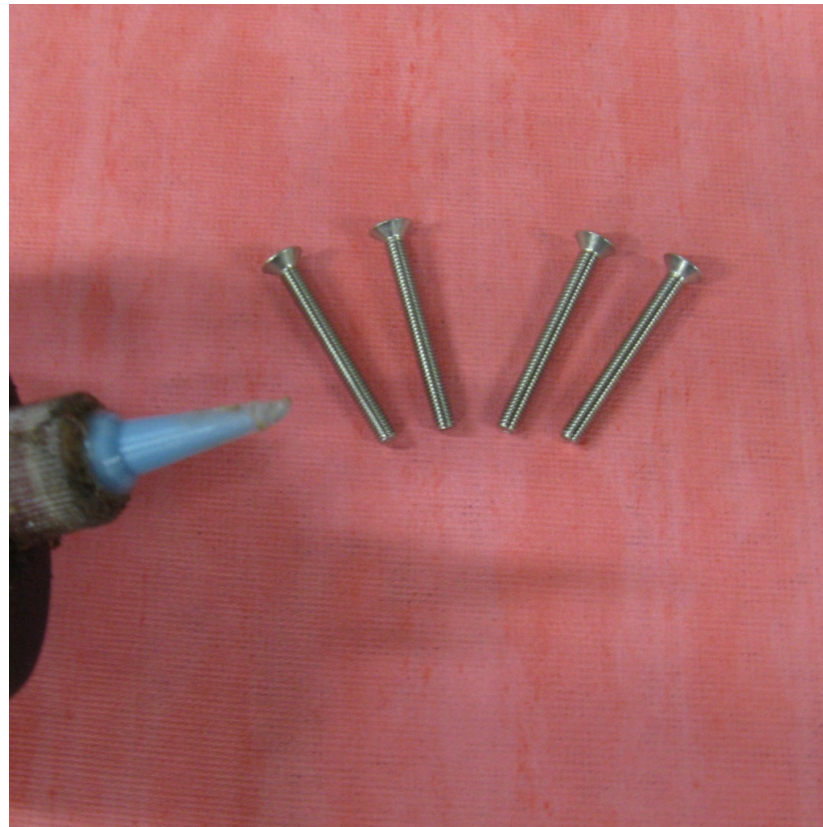


**Step 19 Remove the rack and pucks from the box. Use the 21/64" drill bit and electric drill to enlarge the last 2 1/4" pilot holes.**

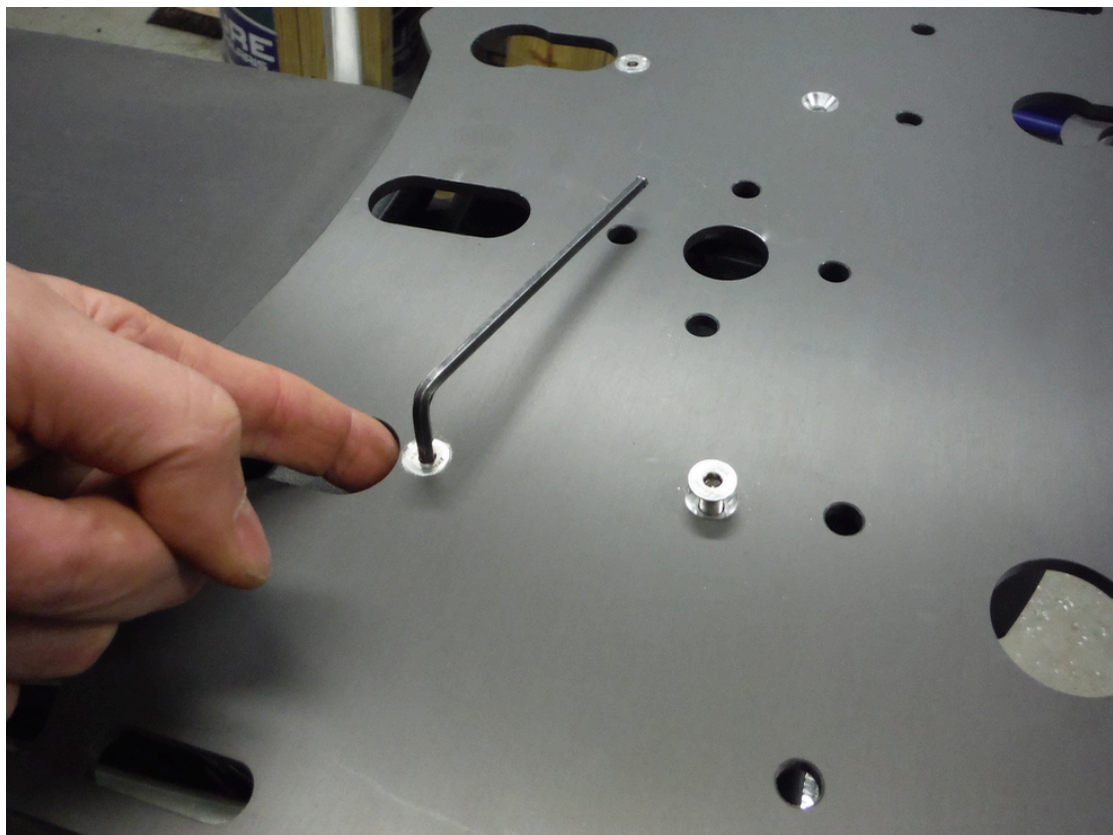


**Step 20 Install all pucks onto the box using the 1 ½" aluminum washers and 5/16" button head cap screws.**

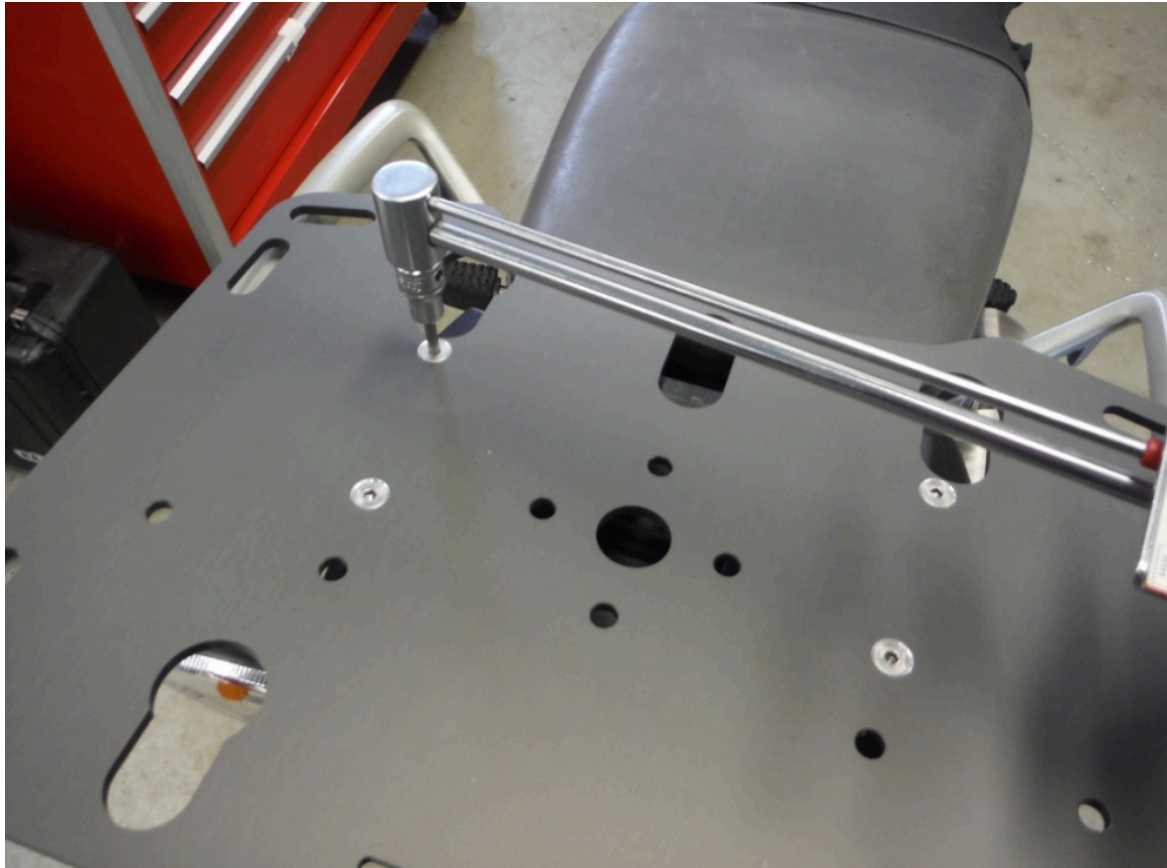
Lightly snug the puck screws at this time, later they will be torqued.



**Apply 242 Blue Loctite or similar thread locker to the four M6 x 55 flat head screws.**



**Thread all four M6 X 55 screws into the plate, through the spacers and into the mounting points. Use your index finger to bias the front spacers towards the rear of the bike as you snug up the front screws. Snug all 4 screws.**



**Torque the 4 screws to 100 inch pounds.**



**Step 21 Install the box onto rack and latch it into place with the cam lever.**



**Step 23 Torque the puck screws to 108 in. lbs.**





**That completes the installation process. Test ride the motorcycle and then check all the fasteners for tightness. Also check the fasteners again after 1000 miles and at every oil change after that.**

For security a 3/16" pad lock can be used to lock the cam lever in the closed position.

Thank You

