



Tools Required:

10 mm socket
Ratchet for 10 mm socket
10 mm combination wrench
4 mm hex wrench
5 mm hex wrench
¼" drill bit
21/64" drill bit
electric hand drill
marking pen
Torque wrench
4 mm hex drive socket
5 mm hex drive socket

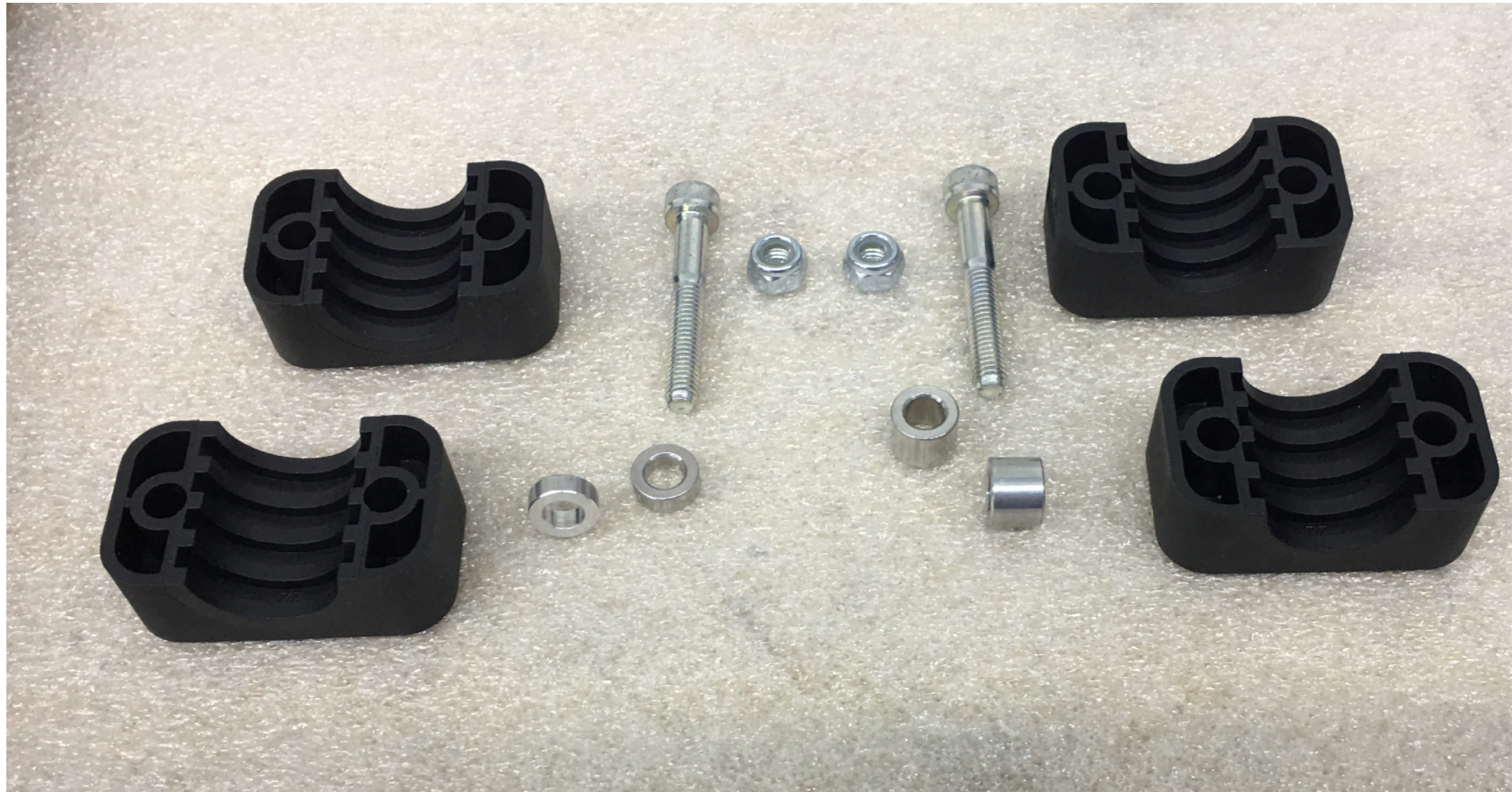
- **Back Road Equipment Slider Rear Rack Installation Instructions HONDA CRF1000 AFRICA TWIN Adventure Sports**

- Kit Contents:
- 1 Slider Plate with cam lever
- 4 – 22 mm mounting clamps
- 6 – M6 x 60 flt hd screws
- 2 – M6 x 40 SHCS
- 2 - 11 mm OD x 4mm long aluminum spacer
- 4 – 11 mm OD spacers
- 6 - 19 mm spacers
- 4 – 8mm Button Head Screws
- 4 – 38 mm diameter aluminum washer
- 2 - M6 x 18 flat head screws
- 10 - M6 nylock nuts
- 1 – Honda subplate
- 2 – stainless steel backer plates

go to backroadequipment.com for installation instructions

**Do not exceed the OEMs
recommendation for weight on the
rear rack of the motorcycle!!**

In order to properly locate the top case it will be necessary to install, remove and re-install the BRE rack, please keep this in mind and read through the instructions completely before starting the work.



Step 1 Locate four clamps halves, two M6 x 40 socket head screws, two 4mm spacers, two 11mm spacers and two M6 lock nuts as shown in the photo.



Step 2 Position the 4 front clamp halves as shown. **Note:** It is not necessary to remove the rack from the motorcycle. For ease of illustration the photos are shown with the rack not installed on the motorcycle.



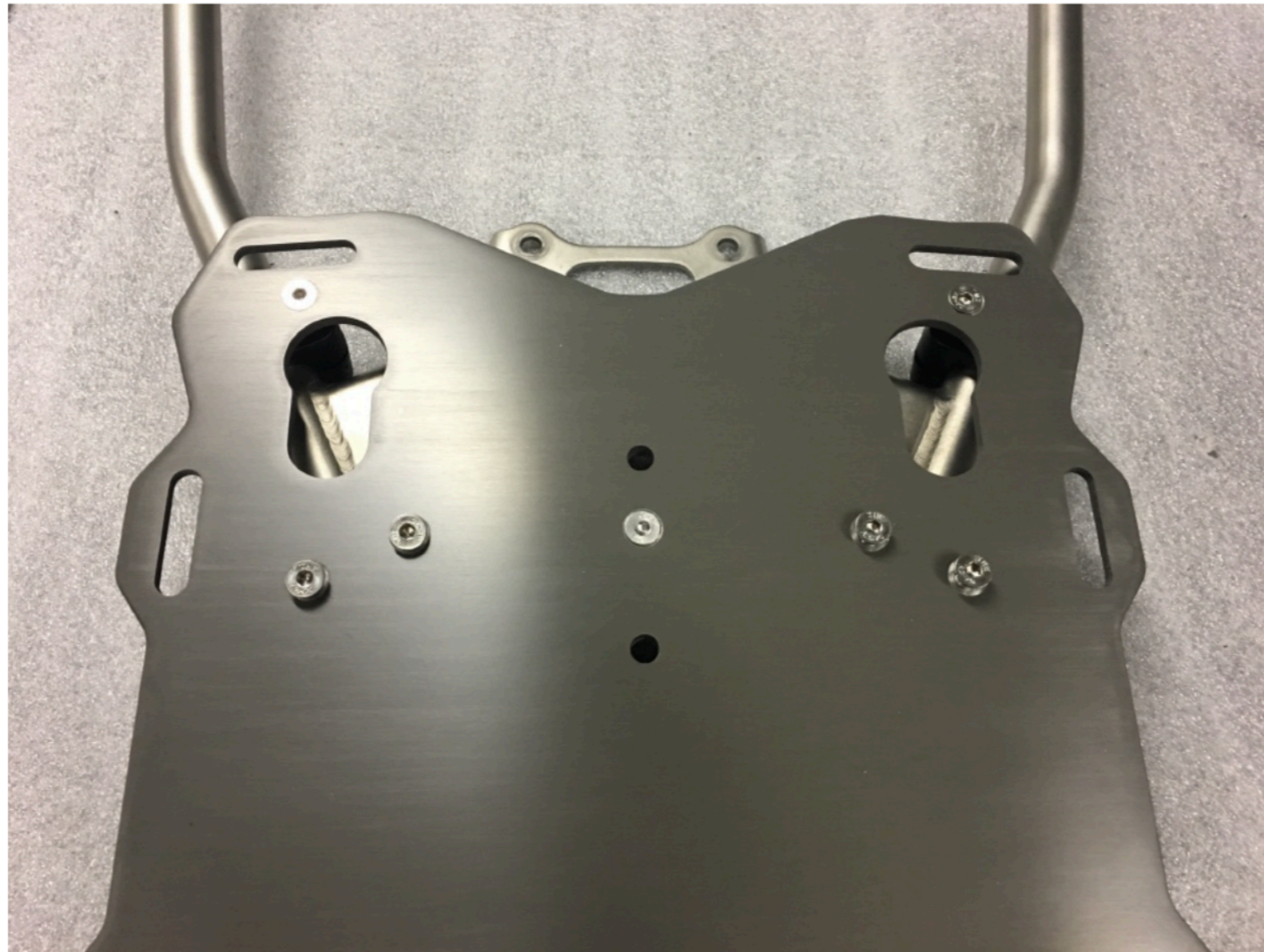
Step 3 Place the 4mm spacers under the heads of the M6 socket head screw, insert the screw through the outer hole of the clamp. Slip 11 mm spacer over screw and thread the M6 lock nut onto the screw. Tighten the M6 lock nut until the clamp is completely closed as shown in the photo.



Step 4 Insert a 19mm stepped spacer into each of the inner clamp holes as shown.



Step 5 Install 2 clamp halves to the rear of the OEM rack as shown in the photo. Insert the 4 remaining 19 mm stepped spacers as shown.



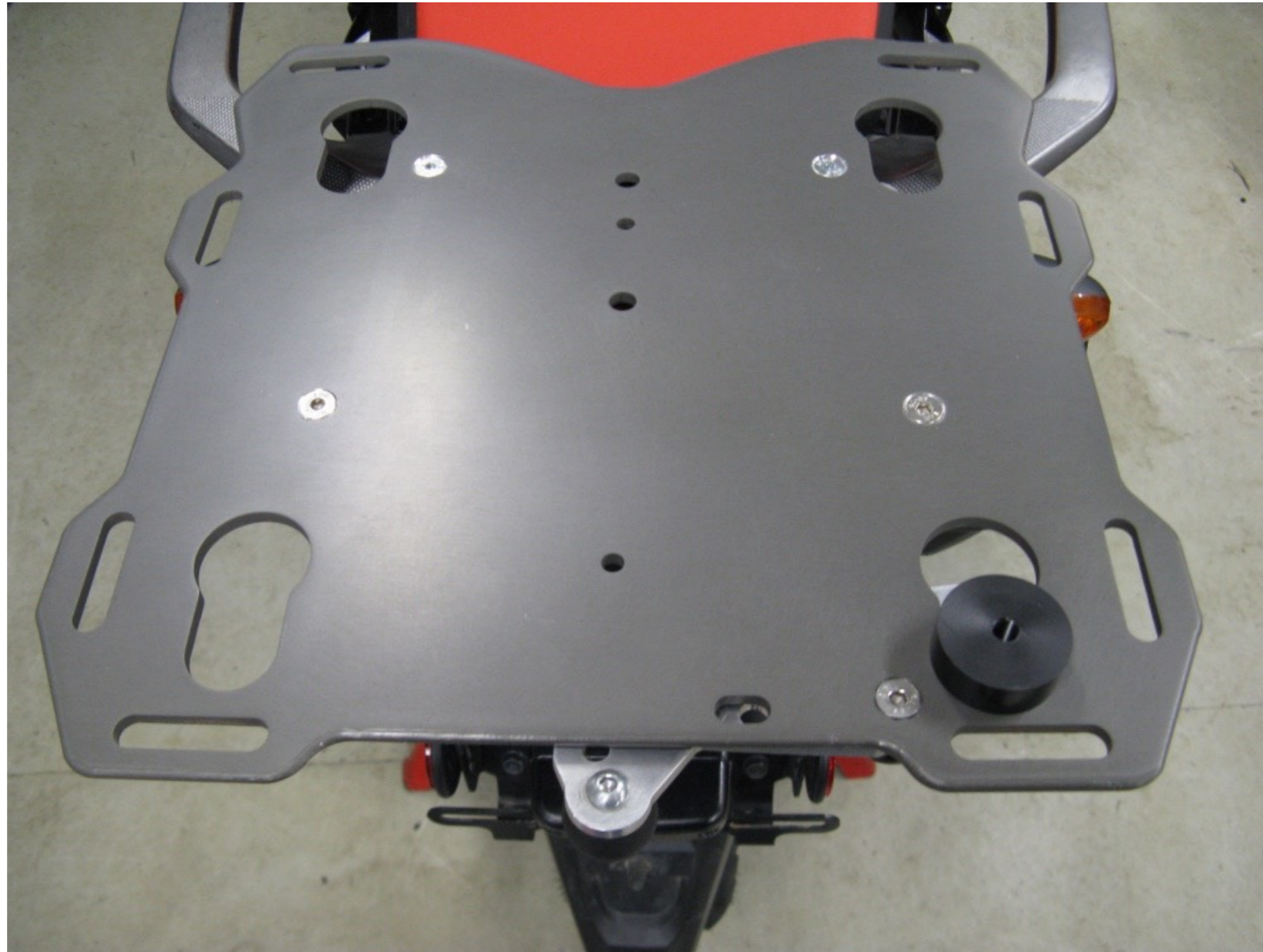
Step 6 Set the Slider plate on top of the clamps. Insert the six M6 x 60 mm flat head screws through the Slider plate and the clamps as shown.



Step 7 Place the rear clamp halves on as shown. Install the two remaining 11mm spacers and M6 lock nuts on the inner front 60 mm screws.

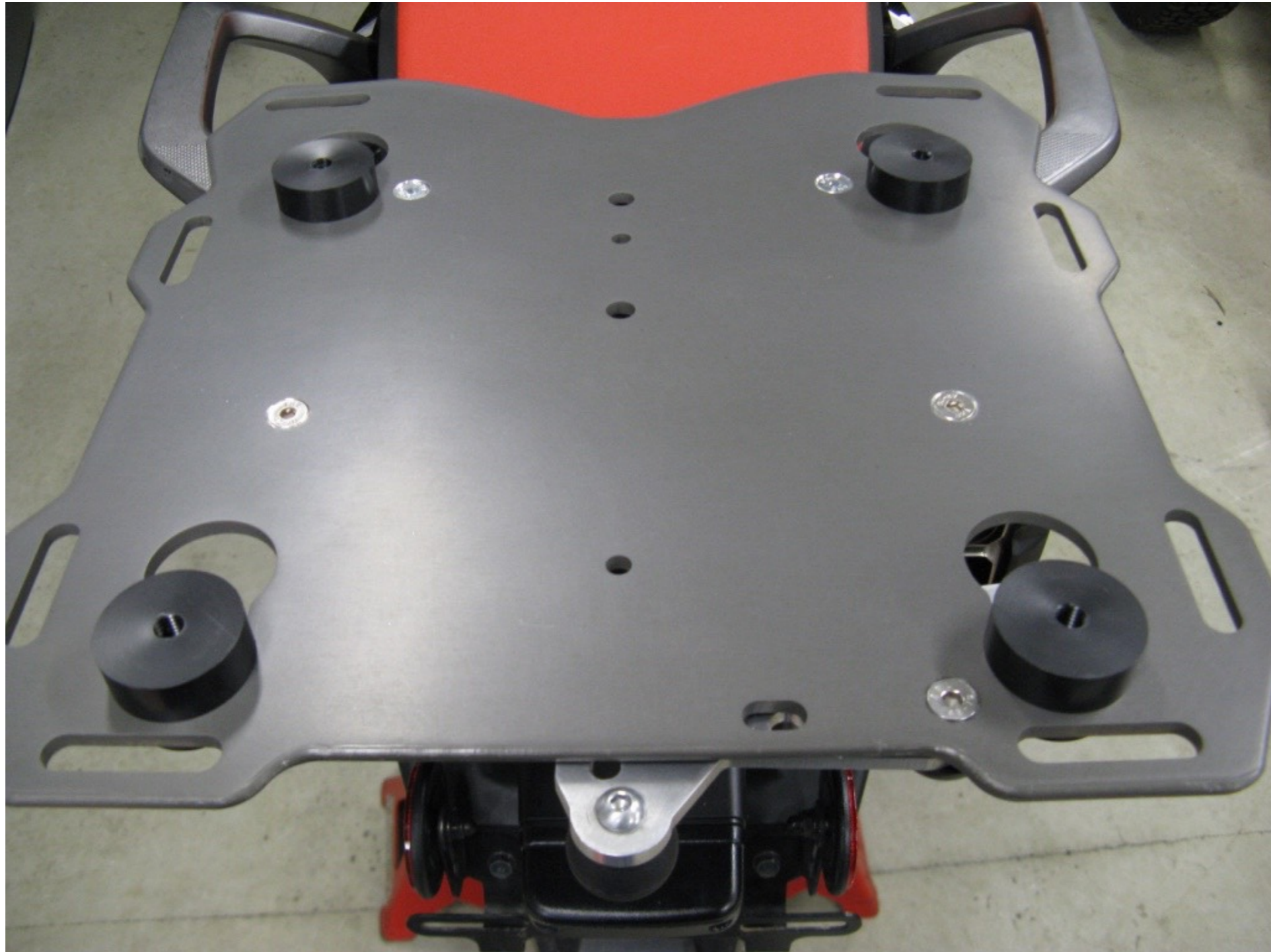


Step 8 Install the stainless steel clamp plates and M6 lock nuts on the rear clamps as shown. All of the clamp screws can be tightened at this time. There should be no gap between the clamp halves when the M6 lock nuts are properly tightened.



Step 9 Install one of the black plastic pucks into the key hole with the cam lever. Lock the puck into place with the cam lever. This will be referred to as the “Master Puck”

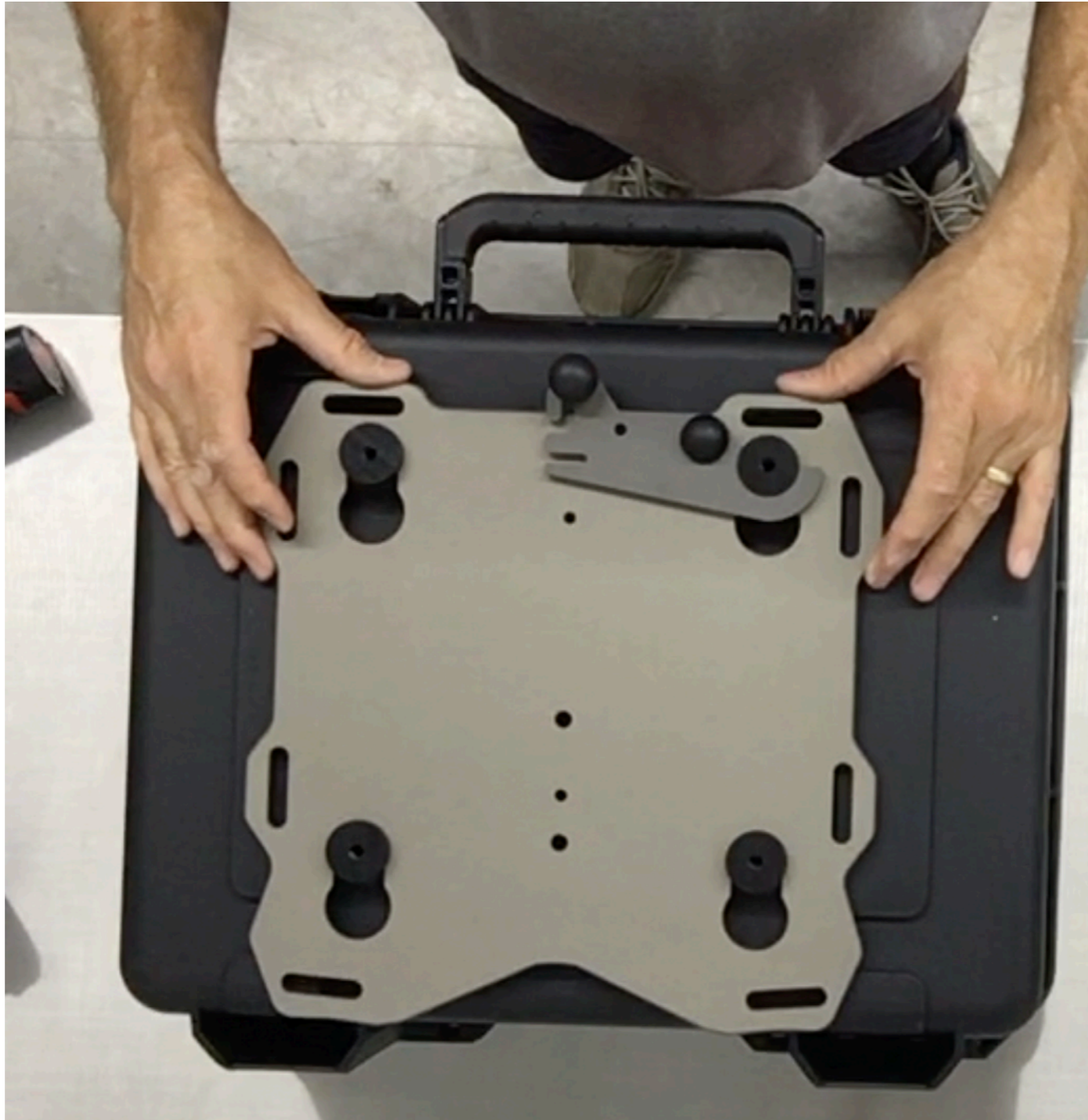
Note: Remove the large washer and screw from the puck before putting into the plate. The screws and washers are installed into the pucks for shipment as part of our QA process.



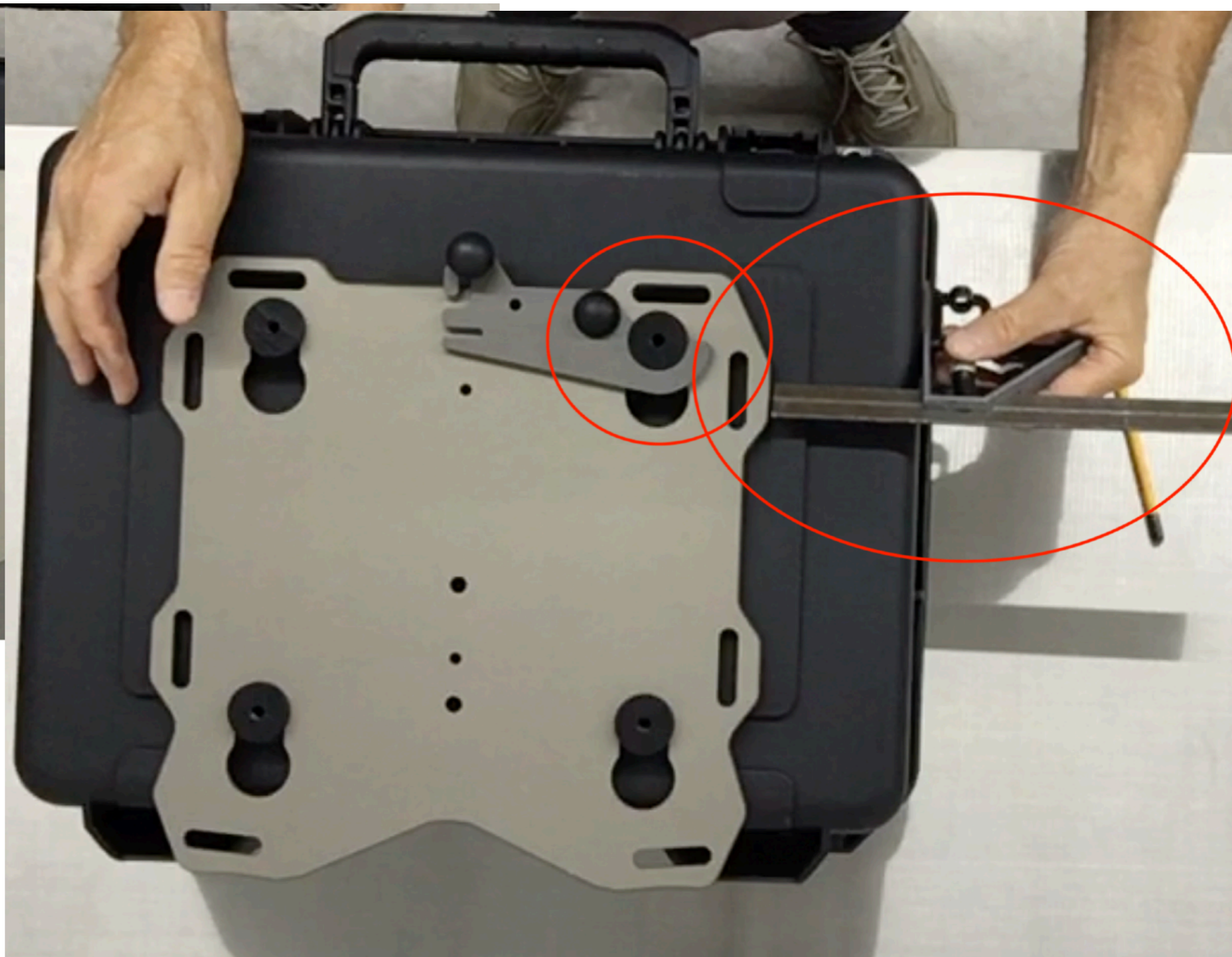
Step 10 Insert the 3 remaining pucks into the keyholes in the plate.



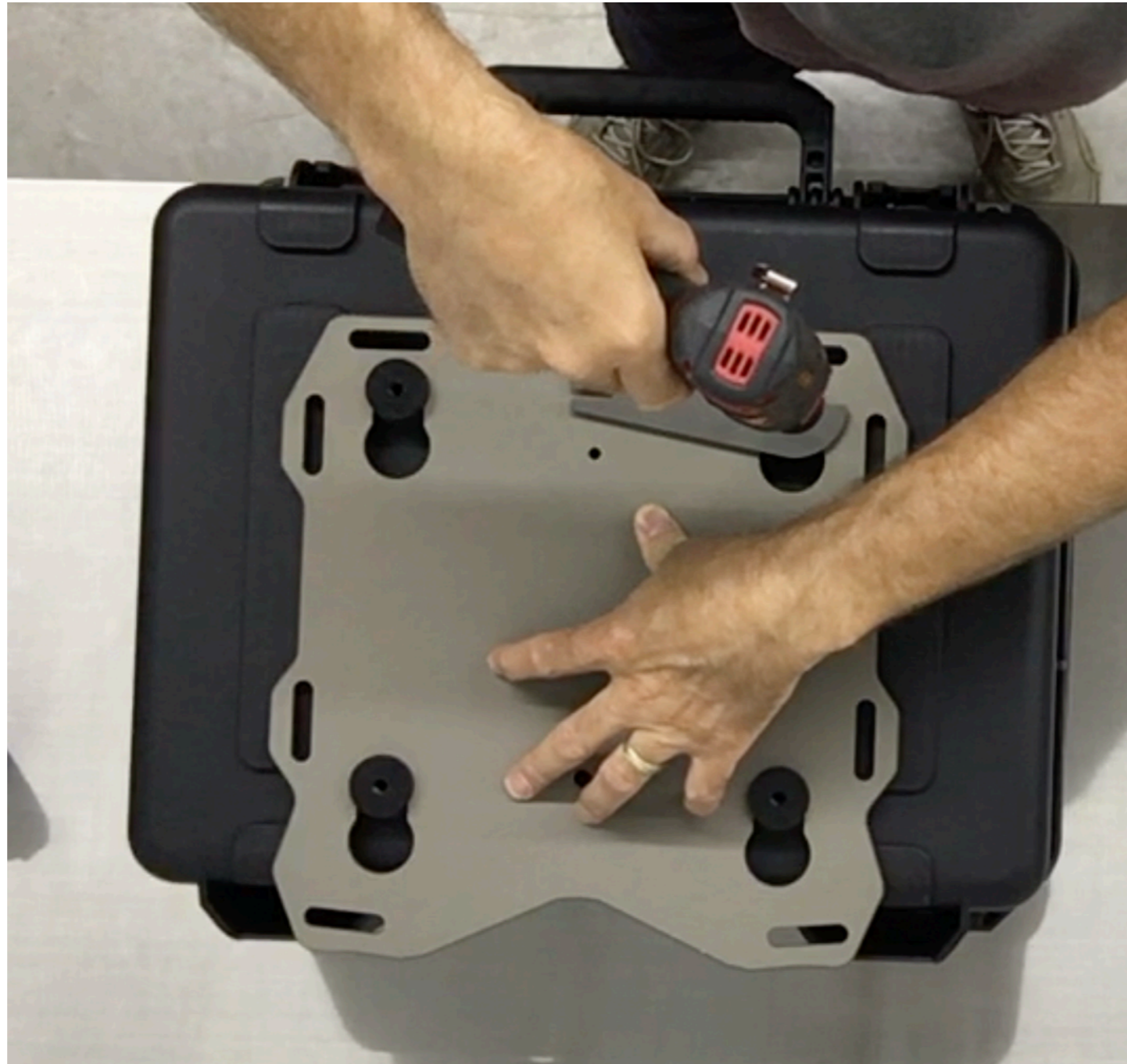
Step 11 Position the case on top of the pucks. Determine the for/aft location (side to side will be determined later). Position the box as far forward as possible without interfering with passenger comfort. Also consider if you will be placing any gear on the seat or if you want to be able to remove the seat with the box in place. Use a marker to mark the master puck location on the box.



Step 12 Place the case on a table or other work surface. Remove the 6 M6 flat head screws and nuts holding the Slider plate onto the OEM tube rack. Place the Slider plate with the pucks installed on the case.



Step 13 Locate the puck marker on the case and align the master puck with the mark as it was on the bike. Adjust the box side to side and make any final adjustments to the location.



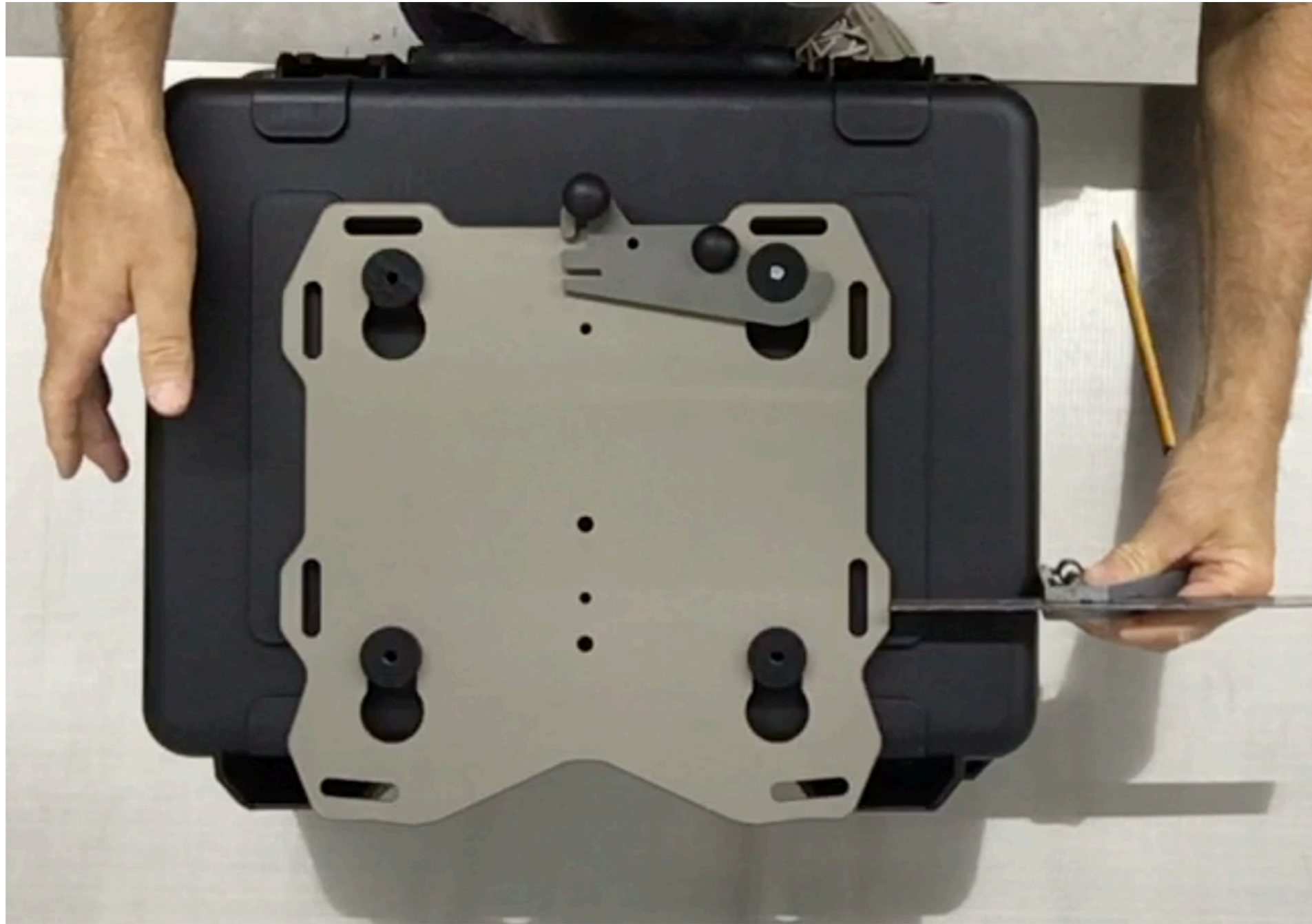
Step 14 With one hand apply downward force on the Slider plate, use your other hand to drill the case. With a ¼” drill bit and electric drill use the master puck as a drill guide and drill a pilot hole through the case.



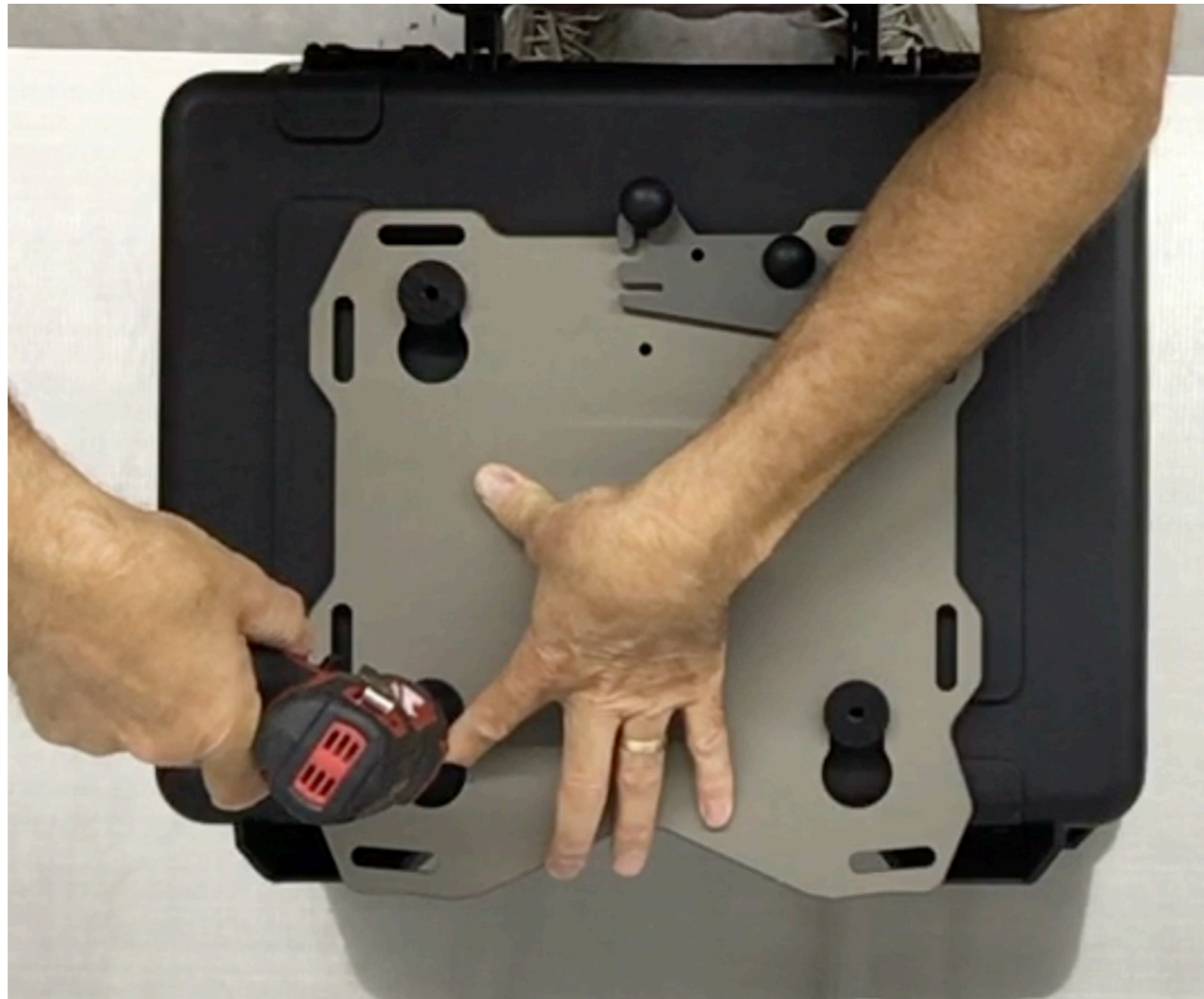
Step 15 Remove the Slider plate from the case. Use the $21/64$ " drill bit and electric drill to enlarge the $1/4$ " pilot hole.



Step 16 Use a M8 x 38 flat washer and the M8 button head cap screw to attach the master puck to the case.



Step 17 Place the Slider plate with the other 3 pucks onto the master puck and latch it into position. Square up the plate and box to each other (last chance).

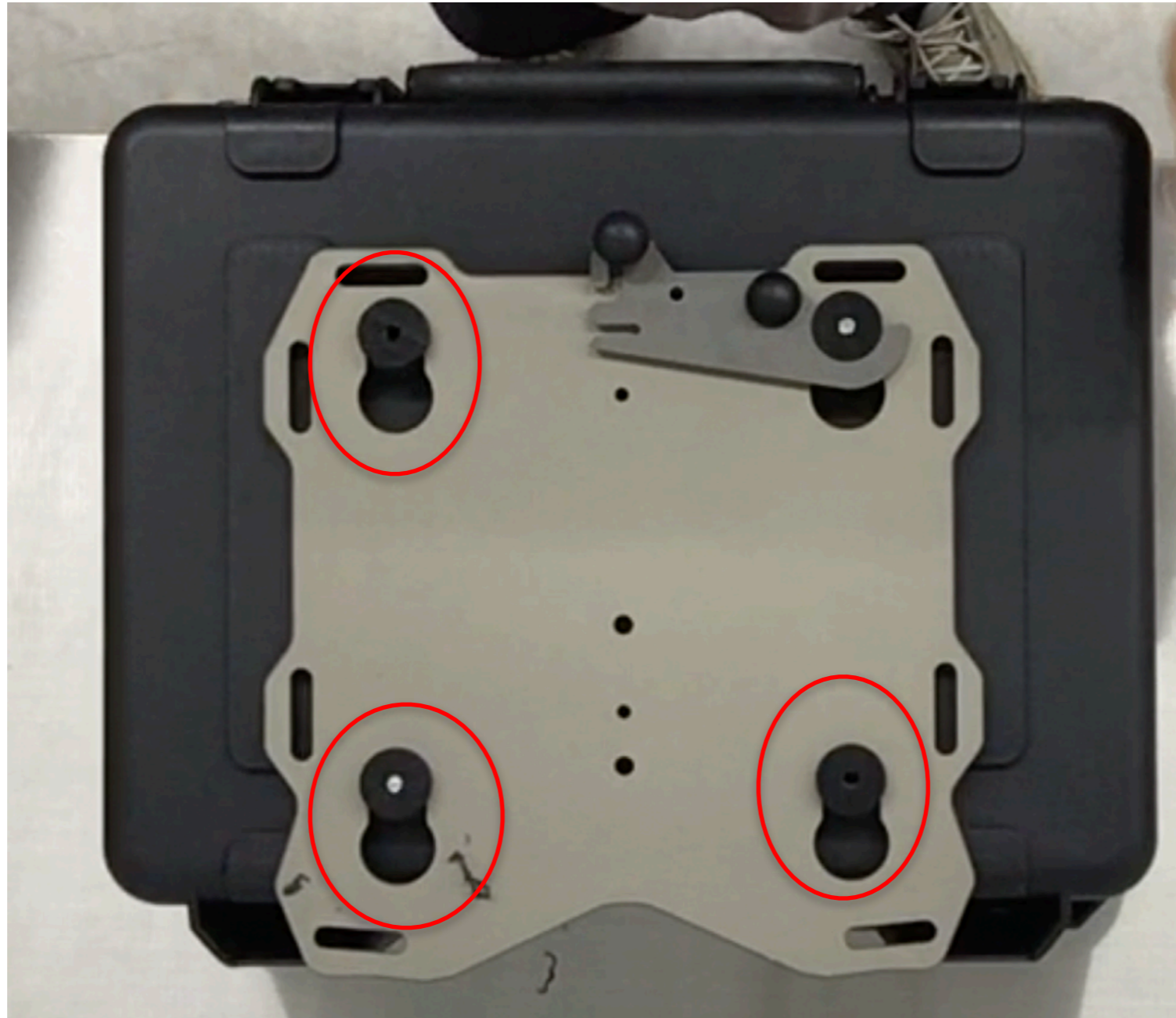


Step 18 With the ¼” drill bit, use the puck diagonally across from the master puck as a drill guide and drill a second pilot hole in the case.

Make sure the pucks are seated in the keyholes before drilling!!

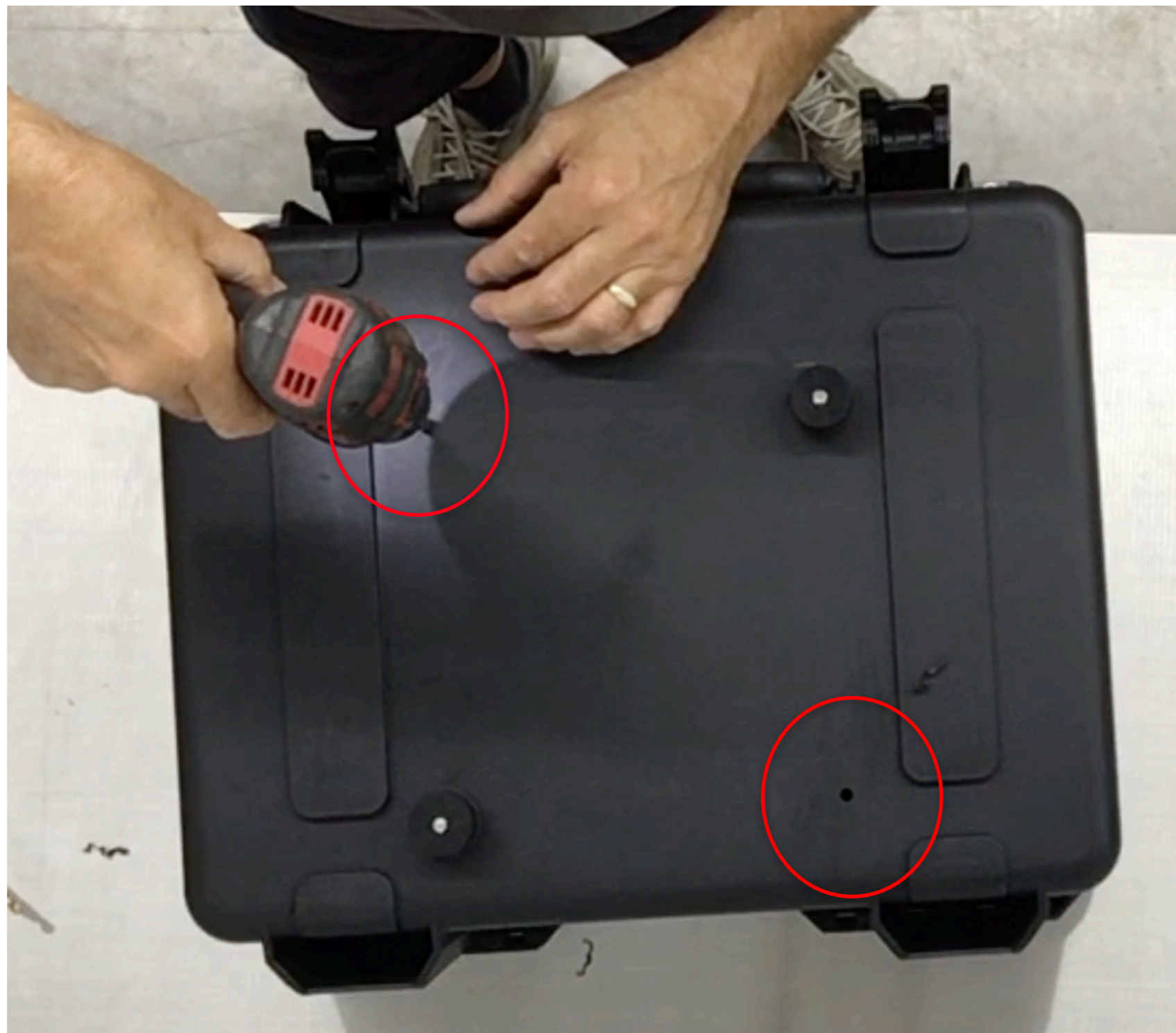


Step 19 Remove the slider plate from the case and use the 21/64” drill bit to enlarge the second 1/4” pilot hole.



Step 20 Attach the second puck to the case with the M8 hardware. Place the Slider rack on the case and latch it into position. With the 1/4" drill bit use the 2 remaining pucks as drill guides and drill the last two 1/4" holes.

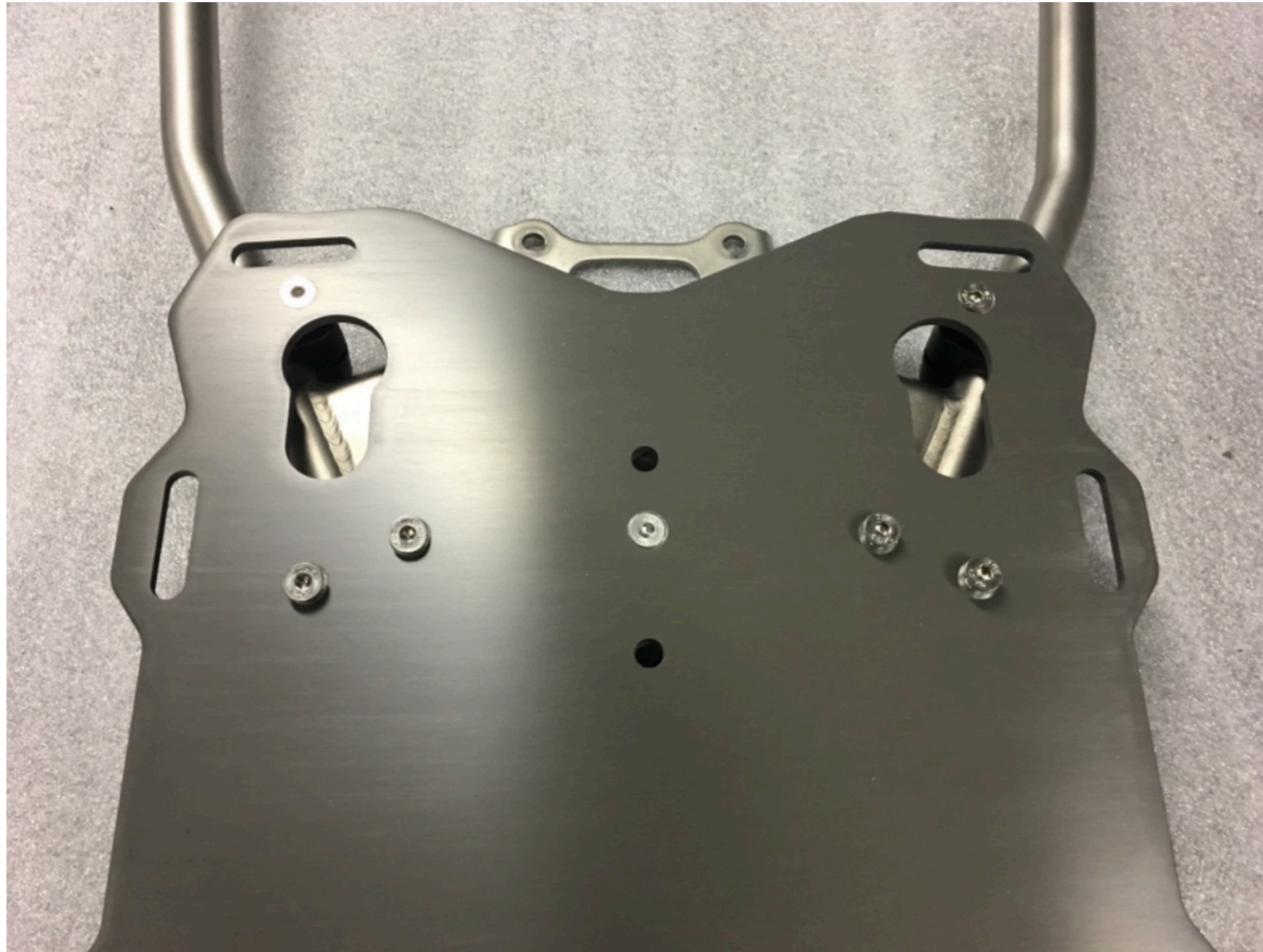
Make sure the pucks are seated in the keyholes before drilling!!



Step 21 Remove the Slider rack and pucks from the case. Use the 21/64” drill bit and electric drill to enlarge the last two 1/4” pilot holes.



Step 22 Install all pucks onto the case using the M8 flat washers and M8 button head cap screws. Lightly snug the puck screws at this time, later they will be fully tightened.



Step 23 Re-attach the plate using the six M6 x 60 flat head screws, clamp halves and M6 lock nuts. Torque the screws to 8ft.lbs.



Step 24 Install the case onto rack and latch it into place with the cam lever.



Step 25 Torque the puck screws to 9 ft.lb. or 12.2 Nm.



For security a 3/16” Master 130D pad lock can be used to lock the cam lever in the closed position. Ace Hardware Item#52730

That completes the installation process. Test ride the motorcycle and then check all the fasteners for tightness. Also check the fasteners again after 1000 miles and at every oil change after that.

Thank You

