



- Back Road Equipment  
Slider Rear Rack Installation  
R1200 GS Adventure

Tools Required:

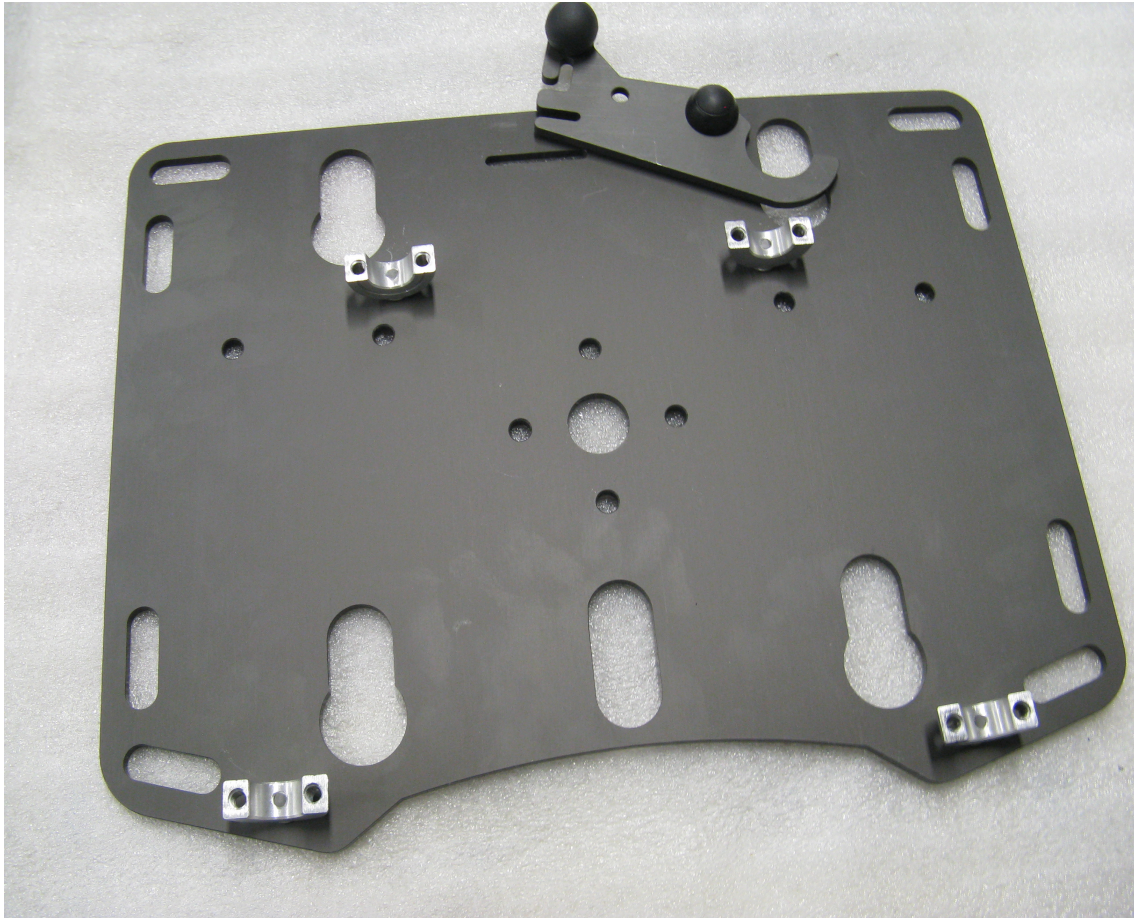
4 mm hex wrench  
3/16" mm hex wrench  
1/4" drill bit  
21/64" drill bit  
electric hand drill  
marking pen  
Torque wrench  
4 mm hex drive socket  
3/16" hex drive socket

- Kit Contents:
- 1 Slider Plate with cam lever
- 4 - mounting collars with 1/4" - 24 screws
- 4 - pucks
- 4 – 8mm Button Head Screws
- 4 - 1.5" diameter aluminum washer
- 4 – 6 mm flat SS washer

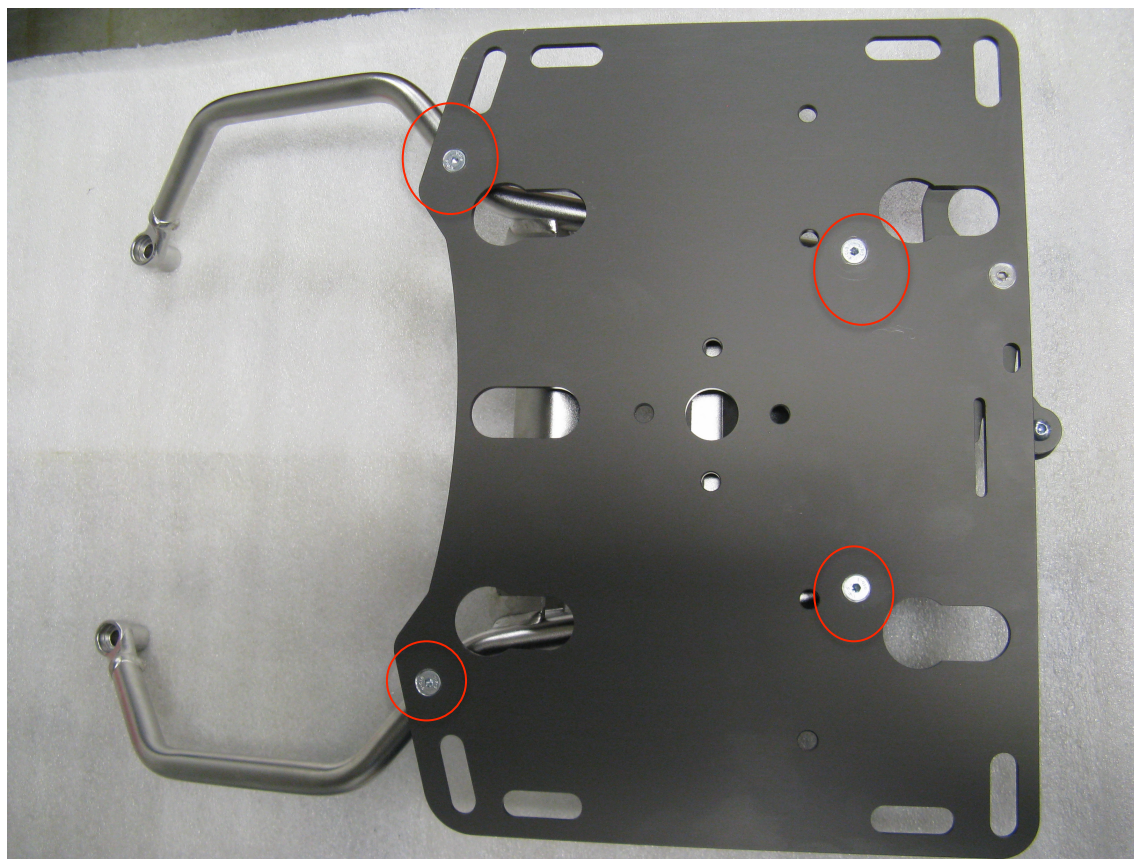
go to [backroadequipment.com](http://backroadequipment.com) for installation instructions

Do not exceed the OEMs  
recommendation for weight on the  
rear rack of the motorcycle!!

In order to properly locate the top box it  
will be necessary to install, remove and re-  
install the BRE rack, please keep this in  
mind and read through the instructions  
completely before starting the work.

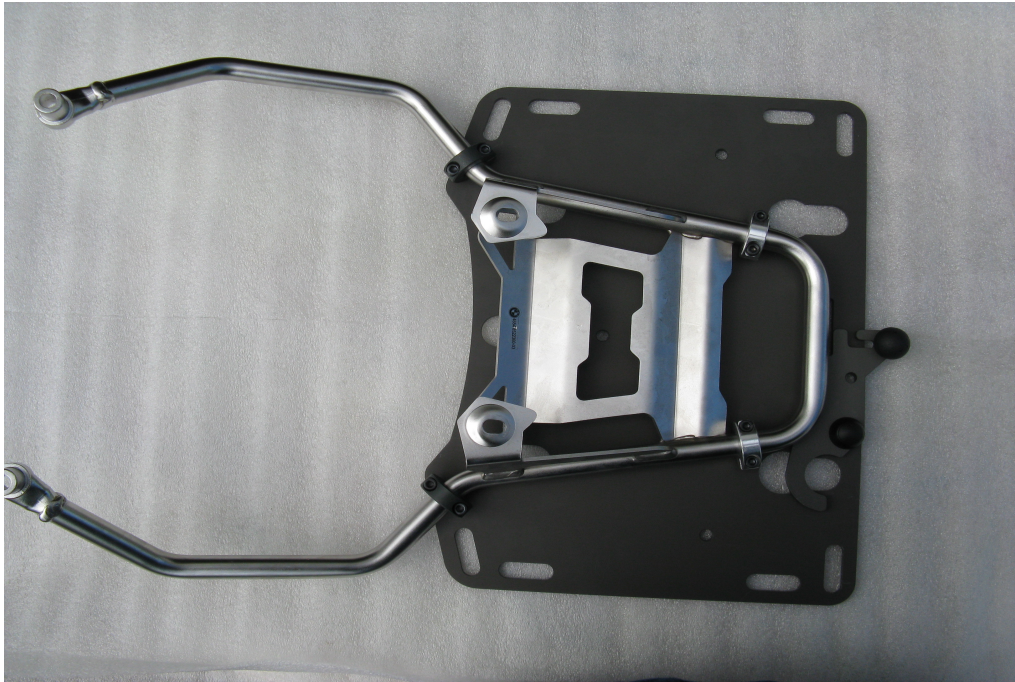


**Step 1 The rack is shipped with the collars in place. Remove the bottom collar halves so the plate looks like the one in the photo.**



**Step 2** Note tube rack is shown removed from the bike, it is *not* necessary to remove from the bike for installation. *Loosen the 4 collar retaining screws just enough so you can rotate the collars.* Place the plate with the collars onto the tube rack.

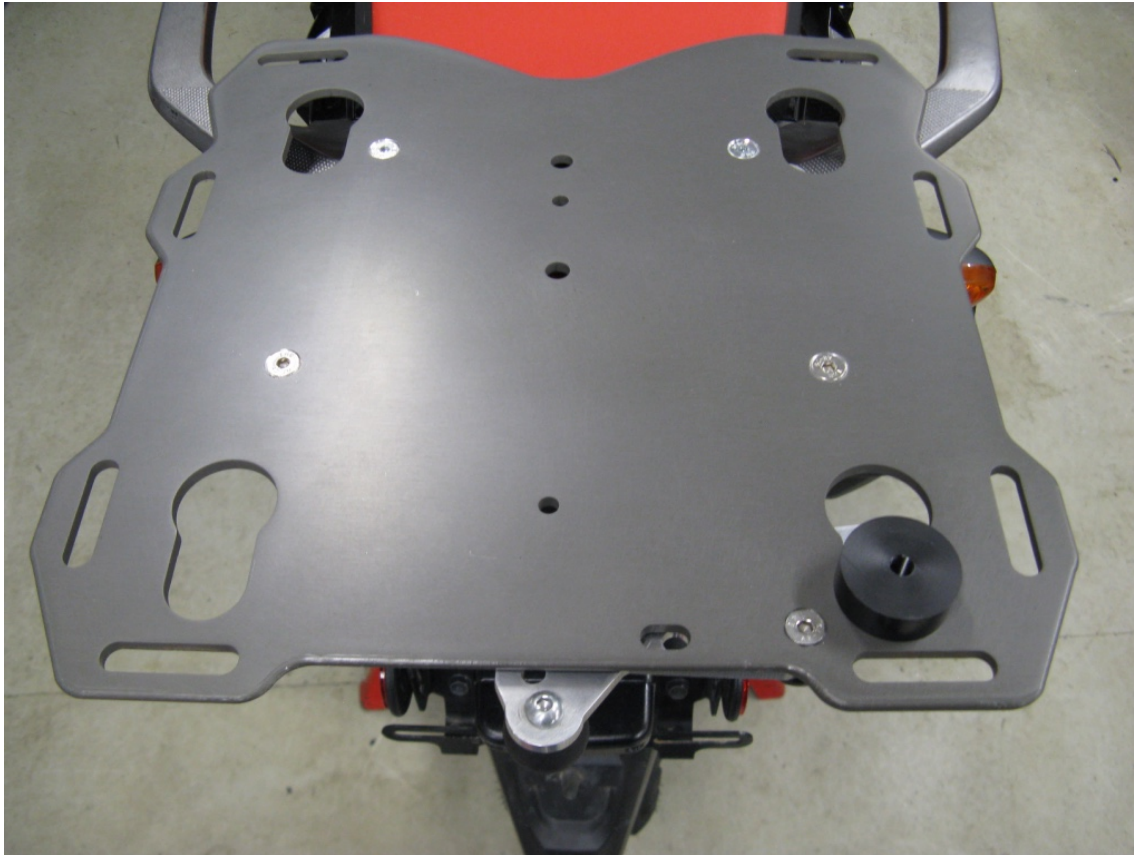




**Step 3 Adjust the top collar halves so the tube rack fits snugly in the collars. The Slider plate should be positioned on the tube rack as shown in the photo. Install the bottom collar halves back onto the top collars. Using a 3/16" hex key wrench hand tighten the screws. Once the rack is positioned correctly and the collars fit snug to the tube rack, torque the 8 screws to 120 in. lbs.**



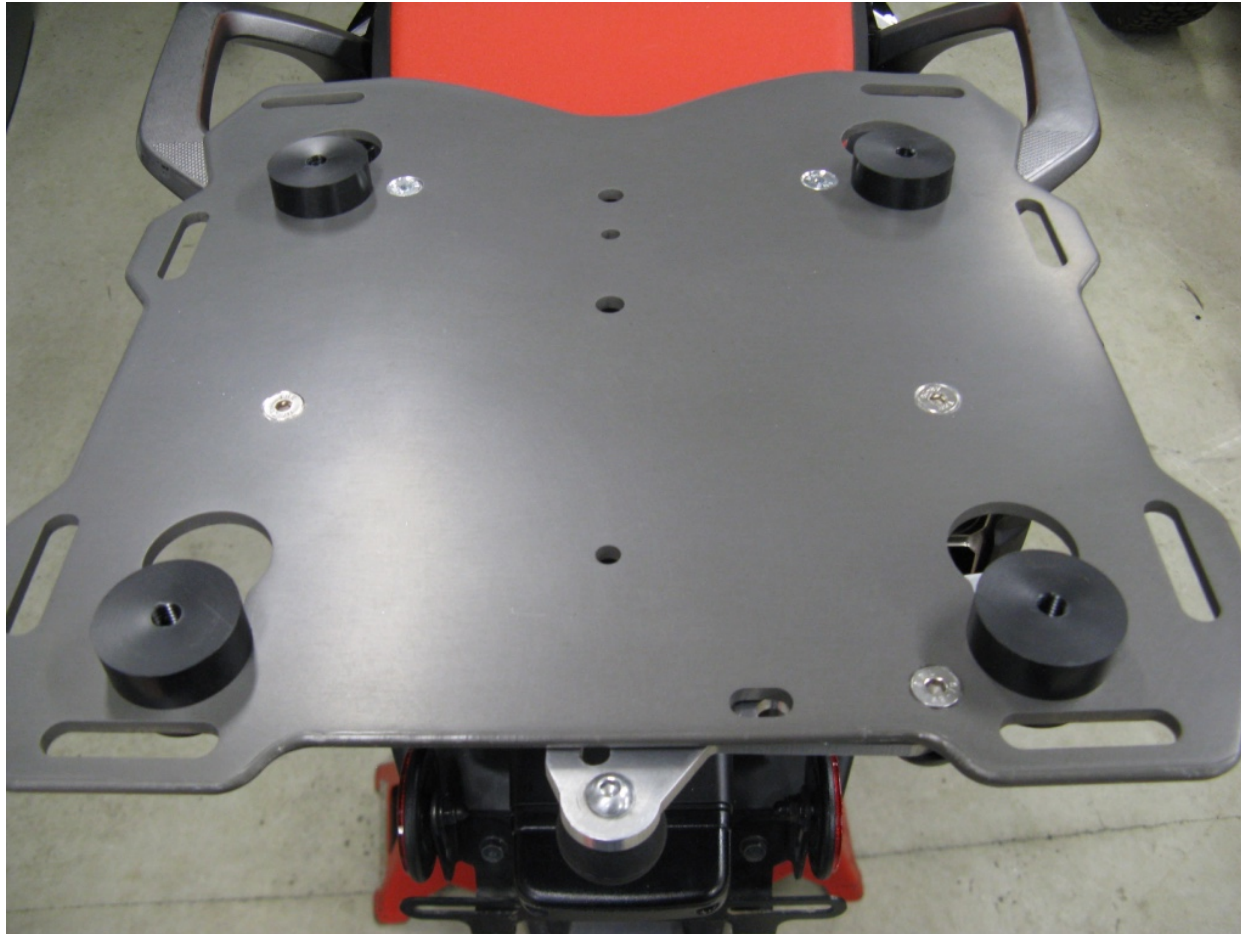
**The plate is now temporally mounted on the bike. The next steps explain how to locate and mount the quick connect pucks to the top case. The motorcycle shown in some photos may not be exactly the same as your bike, but the process is the same for all bikes.**



**Step 4 Install one of the black plastic pucks into the key hole with the cam lever. Lock the puck into place with the cam lever. This will be referred to as the “Master Puck”**

Note: Remove the large washer and screw from the puck before putting into the plate. The screws and washers are installed into the pucks for shipment as part of our QA process.



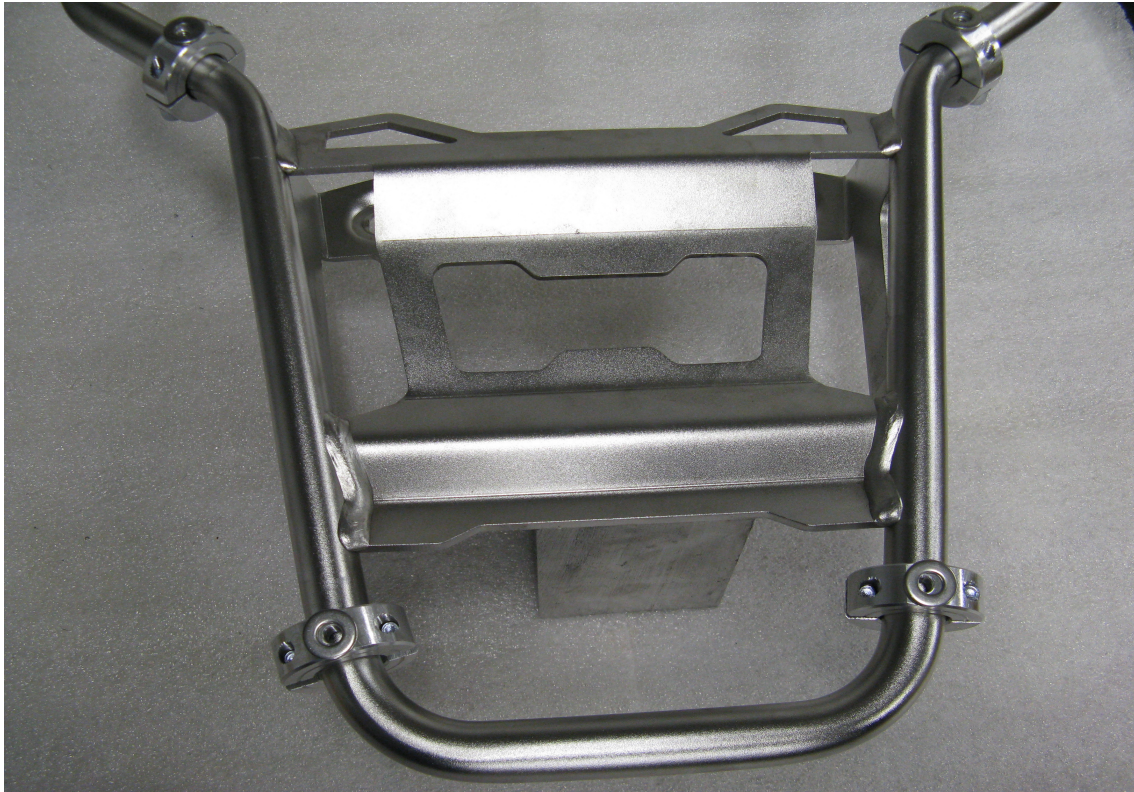


**Step 5 Insert the 3 remaining pucks into the keyholes in the plate.**





**Step 6 Position the case on top of the pucks. Determine the for/aft location (side to side will be determined later). Position the case as far forward as possible without interfering with passenger comfort. Also consider if you will be placing any gear on the seat or if you want to be able to remove the seat with the case in place. Use a marker to mark the master puck location on the case.**



**Step 7 Caution there are 4 stainless steel flat washers that will be exposed during this next step, do not loose them! Remove the 4 flat head screws from the Slider plate and remove the plate. The collars will be firmly clamped into the correct position on the tube rack. Remove the 4 stainless steel washers from the collars.**



**Step 8 Place the top case on a table or other work surface. Place the Slider plate on top of the bottom of the case.**



**Step 9 Locate the puck marker on the box and align the master puck up with the mark as it was on the bike.**

Adjust the box side to side and make any final adjustments to the location.





**Step 10 Make certain the plate is positioned on the case where you would like it. A helping hand would be useful during the next few steps but it can be done solo.**

With a  $\frac{1}{4}$ " drill bit and electric drill use the master puck as a drill guide and drill a pilot hole through the case.



**Step 11 Remove the plate from the case. Use the 21/64" drill bit and electric drill to enlarge the 1/4" pilot hole**



**Step 12 Use the 8 mm button head cap screw and 1 ½" aluminum washer to attach the master puck to the case.**



**Step 13 Place the plate with the other 3 pucks onto the master puck and latch it into position. Square up the plate and case to each other (last chance).**





**Step 14 With the ¼" drill bit, use the puck diagonally across from the master puck as a drill guide and drill a second pilot hole in the case.**

**Make sure the pucks are seated in the keyholes before drilling!!**



**Step 15 Remove the plate and pucks from the case. Use the 21/64" drill bit and electric drill to enlarge the second 1/4" pilot hole.**



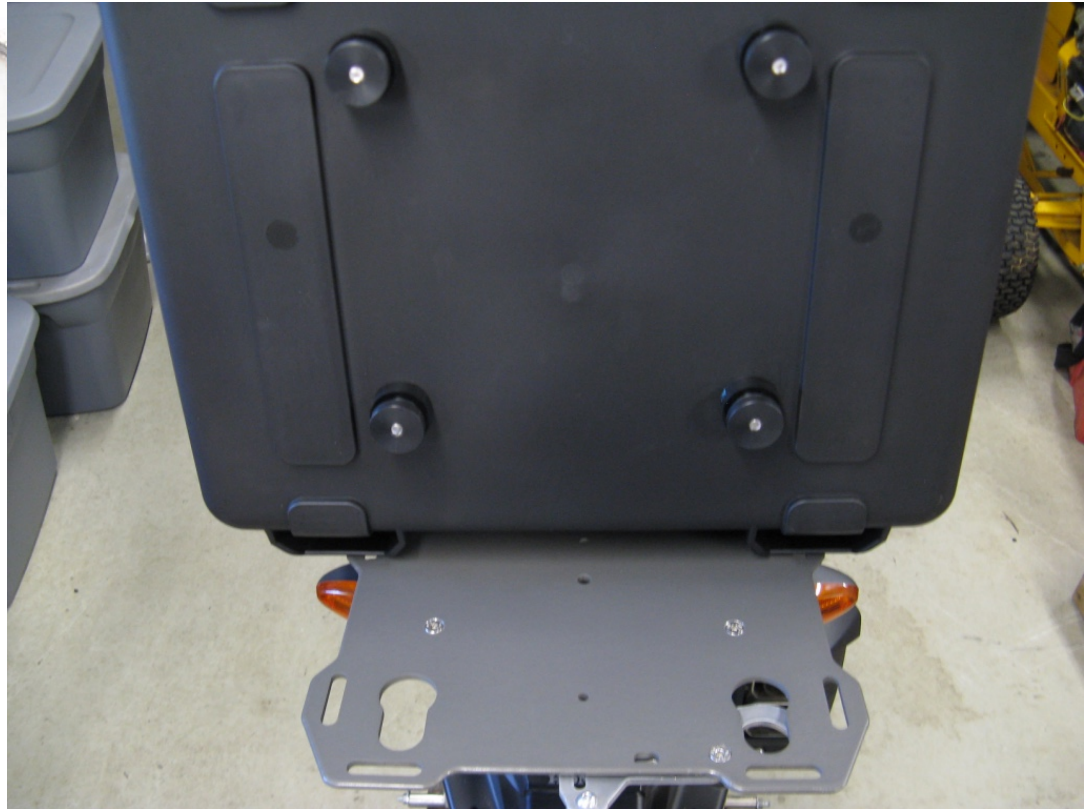
**Step 16 Bolt the second puck to the case. Place the plate on the case and latch it into position. With the ¼" drill bit use the 2 remaining pucks as drill guides and drill the last 2 pilot holes.**

**Make sure the pucks are seated in the keyholes before drilling!!**



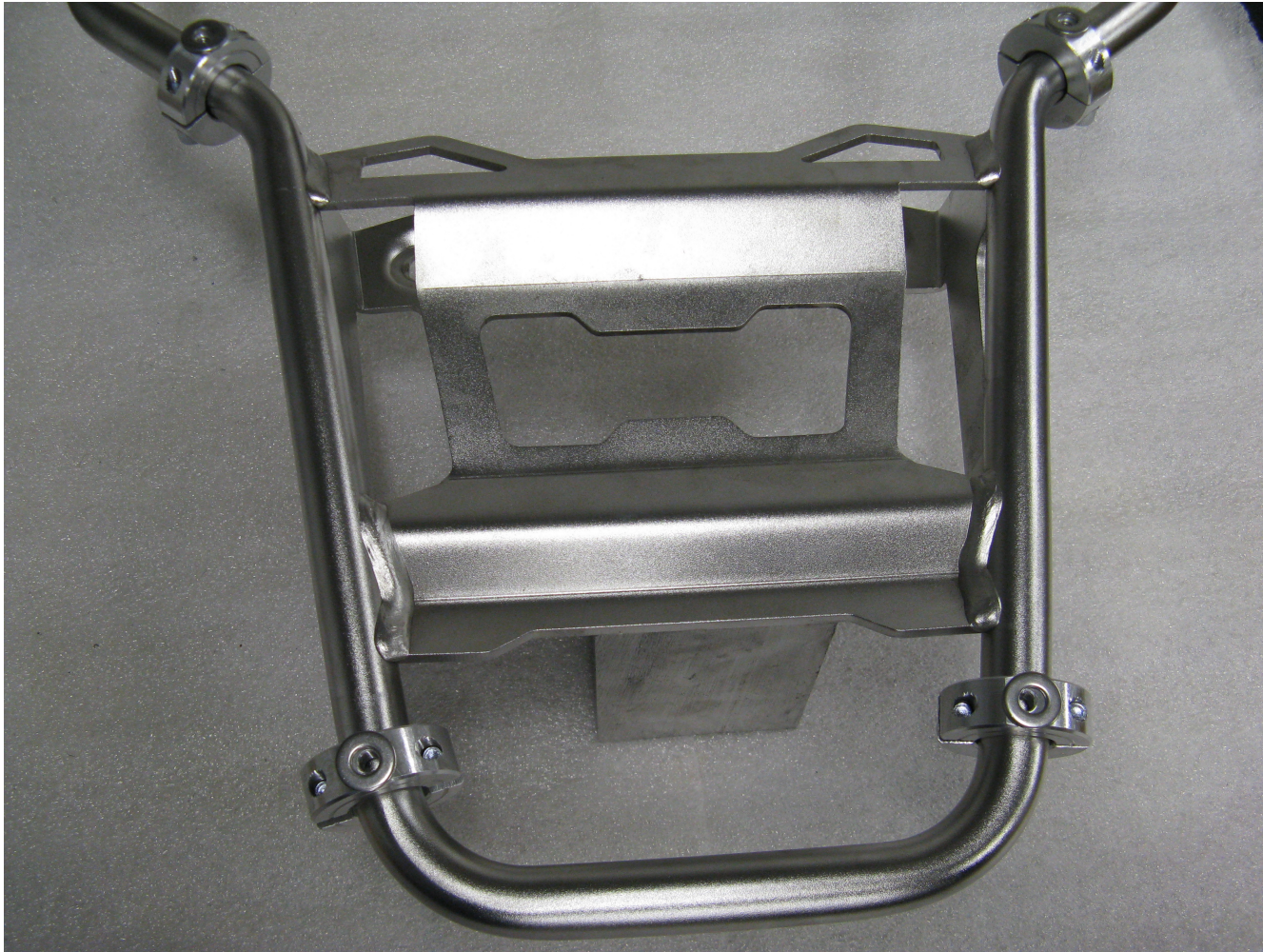
**Step 17 Remove the Slider plate and pucks from the case. Use the  $21/64$ " drill bit and electric drill to enlarge the last  $2\frac{1}{4}$ " pilot holes.**





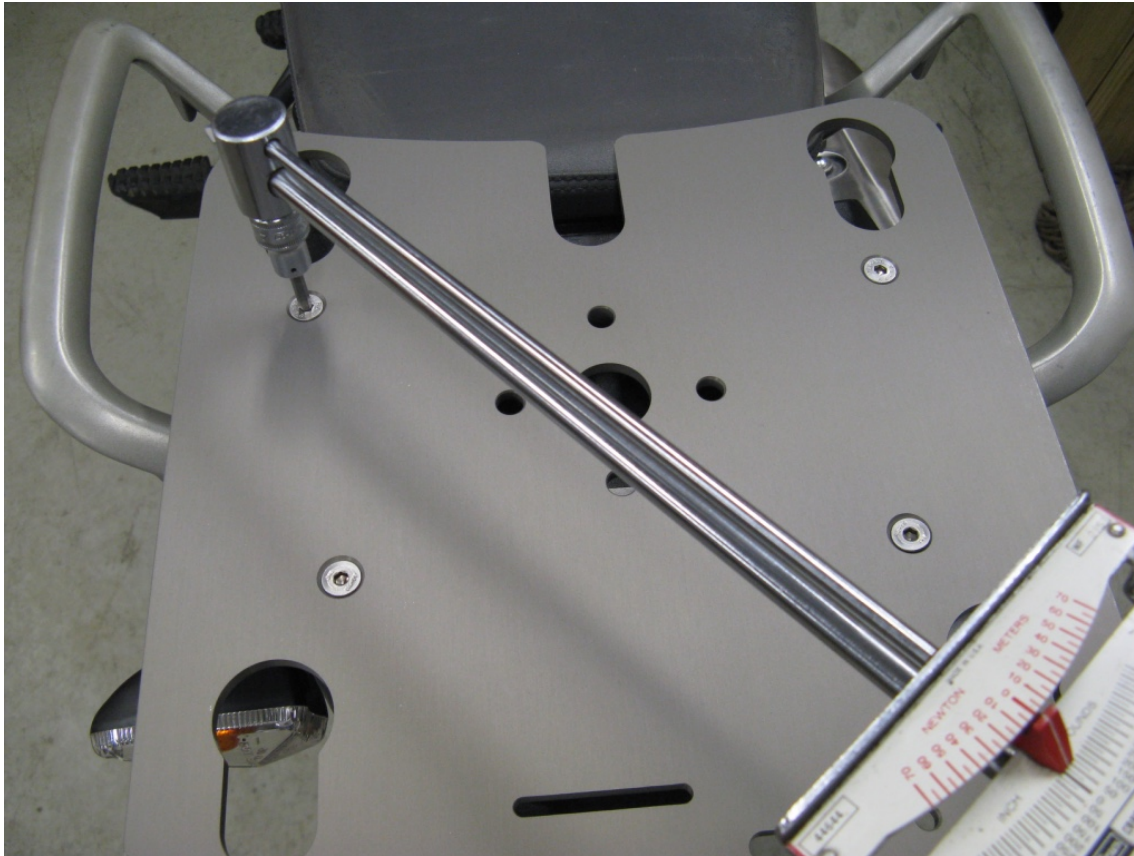
**Step 18 Install all pucks onto the case using the 1 ½" aluminum washers and 8 mm button head cap screws.**

Lightly snug the puck screws at this time, later they will be fully tightened.



**Step 19 Re-install the Slider plate on the washers and mounting collars.**





**Step 20 Torque the 4 screws to 110 inch pounds.**



**Step 21 Install the box onto rack and latch it into place with the cam lever.**





**Step 22 Torque the puck screws to 108 in. lbs.**



**That completes the installation process. Test ride the motorcycle and then check all the fasteners for tightness. Also check the fasteners again after 1000 miles and at every oil change after that.**

For security a 3/16" pad lock can be used to lock the cam lever in the closed position.

# Thank You

